

# The Citizen Journal

Vol. 125 No. 46

Boyer City, Michigan

Serving Boyer City, East Jordan and surrounding areas

Wednesday, Jan. 7, 2004

## At A Glance

### Boyer Falls School to hold 'town meeting'

The public is invited to attend a town meeting forum at the Boyer Falls Public School on Wednesday, Jan. 7, at 7 p.m., regarding the possible expansion of the school building due to growing student numbers.

The informational program will include time for public input.

For more information, call the school at 549-2211.

### Folk music on tap at Peace Coffee House on Jan. 10

The Peace Coffee House will host the monthly installment of its acoustic folk music program on Saturday, Jan. 10, featuring Seth Bernard and String Jam, followed by an open stage.

To be held at the Jordan River Arts Center in East Jordan, the evening will begin at 8 p.m., with the open stage wrapping up at 11 p.m.

The cost is \$5, with children ages 12 and under admitted free.

Peace Coffee House is a smoke and alcohol free environment; organic coffees, teas and sweet treats will be available. Peace Coffee House is an acoustic folk music venue begun in 1991 by local singer/songwriter Rick Meisterheim.

For more information, call Meisterheim at (231) 525-9168.

### Business After Hours event set in Boyer

The Water Street Mall will host the first Boyer Area Chamber of Commerce Business After Hours event of 2004 on Wednesday, Jan. 7, from 5-7:30 p.m.

Hosts for the evening include Metropolitan Title Company (which will host a ribbon-cutting at 6 p.m.); Fair Chiropractic, Sun for the Soul, Pippins, The Center, and Ace Appraisal. Food, drink and door prizes will be on hand.

The Water Street Mall is located at 5 Main St., Boyer City.

For more information, call the chamber at 582-6222.

### 'Duct Tape' is theme of Teen Craft Day at Boyer library

The Boyer District Library will host a Teen Craft Day on Monday, Jan. 12, from 3:30-5 p.m. The theme for the event is "duct tape crafts."

Middle and high school age students are invited to participate in the free event. Space is limited, and pre-registration is required.

To register, call the library at 582-7861.

## New Year's tradition

Boyer Mountain Resort in Boyer Falls rang in the New Year in its traditional way, with plenty of glittering fireworks and a graceful procession of skiers setting the slopes alight, below, to honor the arrival of another year. The display is delightful up close, but even more impressive from a distance, with the bright colors lighting up not only the night sky but the surface of the Mill Pond, right, as well.

photos by  
Vic Ruggles



## WINTER WISDOM

The beauty and splendor of winter is, indeed, amazing.

However, as many northern Michigan residents know, winter can also be highly unpredictable. One thing's for sure though; there will always be, in any given year, a plentiful supply of the white stuff -- despite the occasional warm-up that may make it seem otherwise, Charlevoix County is never wanting for snow.

According to snowfall records maintained by the Charlevoix County Road Commission, last year's total winter snowfall tallied 139.5 inches, requiring 5,708 tons of salt on county roads and 3,593 on local stretches state highway to keep traffic moving.

According to Antrim County Road Commission engineer manager Burt Thompson, January is generally the heaviest month for snowfall in Antrim County, averaging 44.3 inches for the month, followed by December, which averages about 39 inches. During last winter, Antrim County snowfall measured 161 inches. A total of 10,000 tons of salt was used on county and state roads, Thompson said.

Of the eight states bordering the Great Lakes, Michigan residents are most likely to experience lake effect snowfall because the state's landmass touches four of the five.

Except for the western border of the Upper Peninsula and the Lower Peninsula's southern limit at Ohio and Indiana, the entire state is surrounded by the world's largest bodies of fresh water.

Lake effect snow, of course, is the result of cold Arctic air passing over the unfrozen waters of the Great Lakes, pulling added moisture with it and then returning the crystallized moisture (snow) to the cooler land masses below, once onshore.

According to the National Weather Service, lake effect snow typically appears as bands or streets of clouds. These bands are often characterized by periods of snowfall varying from a trace to several inches with open skies appearing intermittently. In contrast to lake effect, system snow is the result of moisture laden air, moving at higher levels in the atmosphere, meeting colder air and descending at a steadier rate, covering a much larger area.

For more detailed information regarding winter weather access the Na-

see WINTER WISDOM on pg. 3

## A new home

### Fund-raising to begin for new Jordan Valley District Library

If all goes as planned, the Jordan Valley District Library will break ground on a new home three times the size of its current building in the spring of 2005.

According to library director Dawn Pringle, the library board voted recently to move forward with a fund-raising campaign in support of the new building project, setting the goal to raise \$4 million. A recently-purchased piece of land on M-66, across from the Maple Ridge Professional Center and adjacent to Glen's Market, is the intended building site.

Though plans for the building are not complete, the structure will include a bookstore and coffee shop.

Funds are expected to come in the form of grants and community support; no millage or bond issue is anticipated.

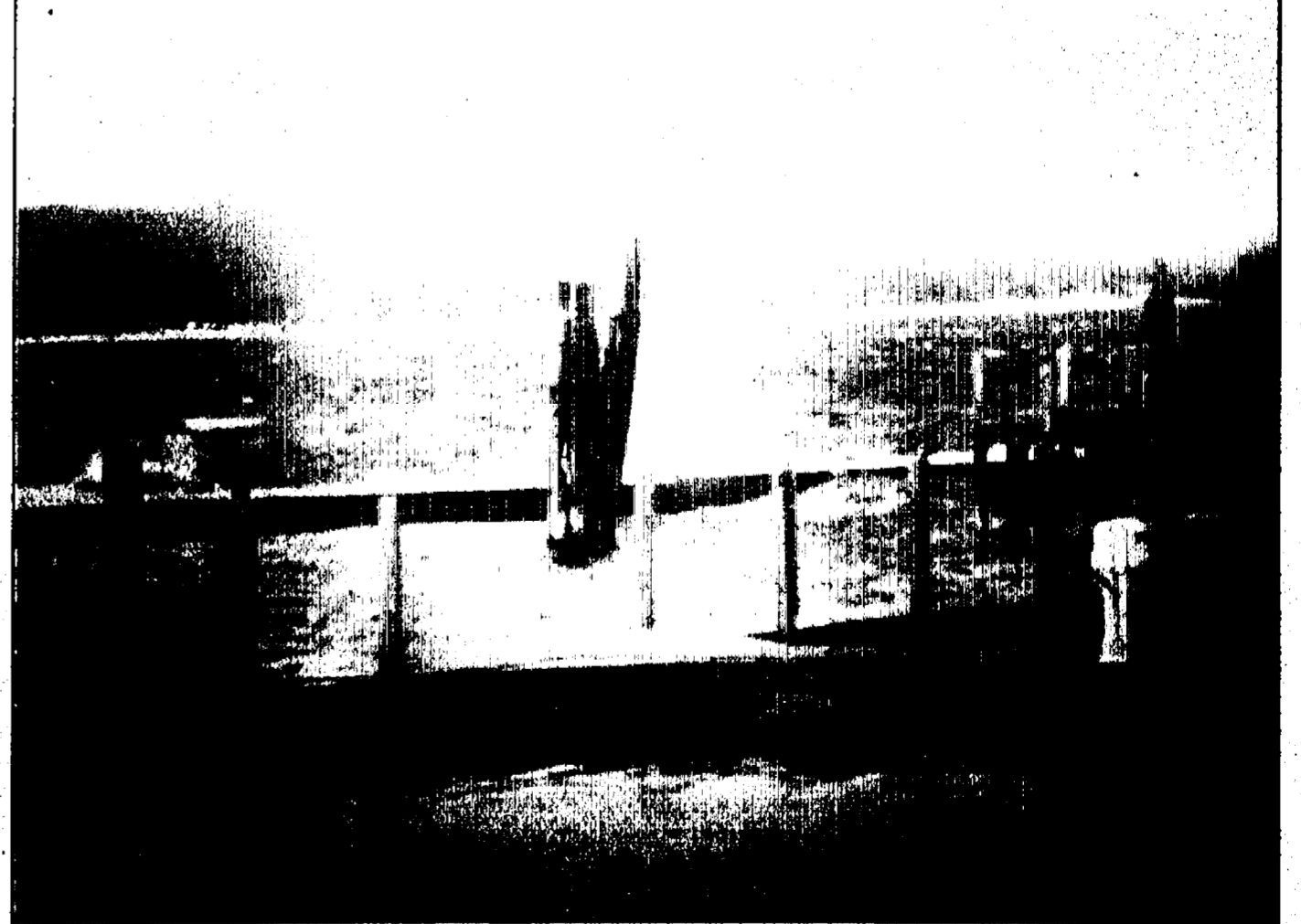
The decision to move the library operations, currently located on a one-acre parcel adjacent to East Jordan High School, has been long in coming.

The need for more space, Pringle notes, was being addressed as long ago as 1998. A strategic planning session in November of 2001, including board and community members, resulted in the creation of several focus groups studying specific goals and issues associated with the library. A user versus non-user phone survey was conducted in March of 2002, and an independent space needs assessment took place in January of 2003.

The space needs assessment was most telling, concluding that the library required no less than 16,780 square feet to meet current needs and standards; the existing building boasts a total of only 5,000 square feet, with a community room and Michigan Works! Learning Lab in the lower level.

see NEW HOME on pg. 2

## Rough waters



High winds kicked up across northern Michigan last week, ruffling the surface of Lake Charlevoix and creating a little extra wave action at the city marina in Boyer City. Though the winds have calmed a bit, cold air has made a return to the area, bringing with it predictions of a good dose of the white stuff.

photo by Angela Shultis

## POLICE REPORTS

### Boyer City Police Department

The following information has been provided by the Boyer City Police Department.

**Tuesday, Dec. 30:** Parking complaint on North Park Street and East Water Street; found property turned in; assisted Boyer City Ambulance Department at Parkview Apartments; citation issued for careless driving; car/deer accident on Charlevoix Street.

**Wednesday, Dec. 31:** Citation for speed issued;

arrested one on possession of marijuana; parking complaint on East Water Street; trespassing at Blockbuster's; unlock of vehicle on Altair Drive; assisted with vehicle in roadway on Pleasant Avenue; speed citation issued; unlock vehicle on West Main Street; two citations issued for improper use of registration.

**Thursday, Jan. 1:** Citation for expired registration; one lodged for operating while intoxicated; assist at Parkview Apartments with unwanted subject; arrested

and transported for operating while intoxicated; malicious destruction of property on Wenonah Street; noise complaint at Parkview Apartments; unlock on Harris Street.

**Friday, Jan. 2:** Report of missing child-located with friends; breaking and entering/trespassing/minor in possession/larceny at Dilworth under investigation; called to Ann Street on dog complaint.

**Saturday, Jan. 3:** Felonious assault on Terrace Street under investigation;

assisted to Charlevoix County Sheriff's Department with minor in possession at Boyer Mountain; probation violation turned over to District Court; citation for expired plate issued; larceny from vehicle while at Glen's.

**Sunday, Jan. 4:** One arrested for possession of marijuana and operating while intoxicated and one for possession of marijuana; citation issued for disregard traffic light.

## Ski Academy to resume for 2004

The Northern Michigan Ski Academy training sessions start Wednesday, Jan. 7, at Boyer Mountain and Friday, Jan. 9, at Boyer Highlands, with training sessions from 6:30-8:30 p.m. on Wednesdays at Boyer Mountain and Thursdays at Boyer Highlands. A meeting for parents will take place at both locations during the first sessions.

The Northern Michigan Ski Academy (NMSA) began more than 25 years ago as a program to teach area children the fundamentals of ski racing. The program is the only non-profit ski academy in the area where young skiers learn how to race and have fun on the snow. Training sessions are held for eight weeks beginning in January. During the Wednesday and Thursday night sessions, skiers will ski in small groups with a NMSA coach; Friday nights

are open gate nights only at Boyer Mountain with courses set for skiers to run as they wish. Coaches are available at the top and bottom of the courses to provide feedback to the skiers.

Each Sunday, from 2-4:30 p.m. "racing" scrimmages take place. On two Sundays, NMSA will offer timed gate racing where skiers ski against the clock and against themselves. Six of the Sundays bring together

the Highlands and the Mountain skiers for combined racing. Racers are ranked for participation in the NMSA Racing Team which races in the Tecumseh Cup, to be held this year on Sunday, March 7, at Boyer Highlands.

For more information, refer to the website [www.nmsa-zone.org](http://www.nmsa-zone.org) or call Dave Hofacker at 526-3064 or Bob Simpson at 535-2786.

## OBITUARIES

### Beatrice Graham

Beatrice Graham, 94, of East Jordan, died on Friday, Jan. 2, 2004 at Charlevoix Area Hospital. Funeral services were held on Monday, Jan. 5, 2004 at 11 a.m. at the Penzien Funeral Homes, Inc. in East Jordan. The Rev. Robert H. Carter of the Evangelical Lutheran Church E.L.C.A. in East Jordan officiated. Interment was in Sunset Hill Cemetery, East Jordan.

Beatrice was born on July 1, 1909 in Brown City, the daughter of Archie and Martha (Ware) Dean. On Jan. 23, 1937 in Brown City, she married Angus "A.D." Graham. They then moved to Dearborn until 1944 when they moved to East Jordan. She is a member of

the Evangelical Lutheran Church E.L.C.A. Beatrice was a volunteer for over 35 years at Grandvue Medical Care Facility in East Jordan and was a member of the Grandvue Medical Care Facility Auxiliary. She was an avid quilt maker who also enjoyed sewing.

Beatrice is survived by her son, Thomas (Kathy) Graham of East Jordan; her

daughter, Sally (Delbert) Sulak of Comstock Park; 10 grandchildren; 28 great-grandchildren; and many nieces and nephews.

She was preceded in death by husband, Angus "A.D." Graham, on May 24, 1999; one great-granddaughter, Alexandria Vozel;

her parents, Archie and Martha Dean; four brothers, Maurice, Morton, Elwyn

and Dorance Dean; and three sisters, Catherine Dean, Helen Campau and Ruth Taylor.

The family received friends on Sunday at the Penzien Funeral Homes, Inc. in East Jordan. Memorials may be given to the Evangelical Lutheran Church E.L.C.A. or East Jordan Ambulance Association.

## New home

continued from page one

The community room, Pringle said, is utilized by a number of different organizations and requests for use exceed availability.

Initially, while participants in the feasibility study expressed high praise for the library services and staff and recognized the need for more space, they also indicated a desire to see an expansion take place at the current location.

In November of 2003, the library board hired Merritt McPherson and

Cieslak, an architectural and planning firm, to determine if the building could support a second floor. Their findings, ultimately, indicated it could not feasibly do so.

Location had, for other reasons, been previously identified as an issue; the space needs assessment indicated that the library should be in a more visible location to serve the entire population in the 112-square-mile service area, which extends into both Charlevoix and Antrim counties.

Additionally, at the current location, the library has no building equity; if the building is no longer utilized as a library, the deed reverts back to the school district.

The library has been in its current location since 1989. The building underwent extensive interior renovation in the mid-90s.

In 2003, the board approved the purchase of the parcel on M-66. As fundraising begins, work will also begin on creating preliminary plans for the building itself.

ALSO IN progress is the creation of a Jordan Valley District Library Friends group, with a meeting set for Jan. 26 at 9:30 a.m. in the library community room.

By-laws have already been drawn up for the organization, which will feature several committees including public relations, programming, and fundraising and gifts.

Those interested in helping out are invited to attend the meeting.

For more information, call the library at 536-7131.

# BUSINESS GUIDE

### SNOWPLOWING



CALL TODAY FOR RATES & AVAILABILITY  
Your Business 231-582-5585  
Is Greatly Appreciated [info@smithirrigation.com](mailto:info@smithirrigation.com)  
**Snow Removal**  
• For Residential and Commercial Applications  
• Competitive Rates • Fast Service

### TELEPHONE SERVICE



Phones • Modems • Jacks  
Homes & Small Businesses  
Roger  
231-582-7418

Senior & Veteran Discounts

### AUTOMOBILES

**FORD MERCURY LINCOLN**  
"Get a hometown deal from your hometown girl."  
**ANITA PENTECOST**  
Sales Representative  
Pat McKeown Ford, Inc.  
06725 U.S. 31 South  
CHARLEVOIX, MI 49720  
Bus. Phone 231-547-4401  
FAX 231-547-6730

### MORTGAGES

**HOMESTAR**  
MORTGAGE SERVICES  
**Robbie Weiss**  
Senior Loan Officer  
Office: 888-505-0033  
Fax: 866-818-4965  
Toll Free: Pager 800-207-1452  
Pager: 313-376-4304  
[rweiss@homestar.com](mailto:rweiss@homestar.com)  
[www.homestar.com/rweiss](http://www.homestar.com/rweiss)  
Serving:  
Boyer Falls • East Jordan • Boyer City  
Petoskey & Charlevoix

### STORAGE

**BOYNE RIVER STORAGE**  
Mini-Storage Units  
Boats • Cars  
Household Goods  
231-582-3318  
505 State St. • M 75 & 980 E. Division • Boyer City

### GLASS

FREE MOBILE SERVICE  
We Pick Up & Deliver  
Auto • Home • Business  
18 Years Experience  
"Be sure to tell your insurance company you want Northern Auto Glass."  
M-F 8-5 • Sat 9-2  
Owners: Doug Skrocki & Steve Nelson  
521 Boyer Avenue • Boyer City  
582-4000

### DRYWALL

**SCHNEIDER DRYWALL**  
HANGING, TAPING, FINISHING,  
TEXTURING, REPAIR WORK  
Insured  
09259 FLAGG RD.  
EAST JORDAN, MI 49727  
LEN SCHNEIDER  
231-536-7449

### SEPTIC SERVICE

**Bradley's**  
Septic Tank  
Pumping Service  
\$5 DISCOUNT W/AD • 1 PER CUSTOMER  
Boyer City, Michigan 49712  
231-582-6148  
"Let us vacuum your septic tank"  
24 HOUR SERVICE

### ELECTRICIAN

**A.C.E. ELECTRIC**  
FOR ALL YOUR ELECTRICAL NEEDS  
Quality Service  
Commercial & Residential  
Free Estimates  
Insured  
Licensed  
Chris Torniga  
Master Electrician  
231-582-2661

### GLASS

**SBCG**  
Since 1950  
SKIP'S  
BOYNE COUNTRY GLASS  
Commercial • Residential  
Mirrors • Auto  
Phone: 582-2655 • Emergency: 548-5533  
100 E. Division • P.O. Box 733 • Boyer City, MI 49712  
R.E. Wixson, Owner Darlene Broman, Manager

### REAL ESTATE

**Century 21**  
Sue Grobaski  
REALTOR®  
Sales Associate  
Up North  
231 East Water Street  
Boyer City, Michigan 49712  
Business (231) 582-6554  
Home (231) 549-2995  
Fax (231) 582-9076  
Each office is independently owned and operated.

### STORAGE

**BOYNE STORAGE AND FUEL CENTER**  
MINI-STORAGE  
Boats • Cars • RVs  
Snowmobiles, etc.  
231-582-9093  
1050 Boyer City • East Jordan Road • Off M 75 • Behind McDonald's

### EXCAVATING SERVICES

**BROTHERS**  
Excavating Services  
Free Estimates  
All Sand-Gravel-Stone Products  
plus  
Washed Stone-Stone Rip Rap  
Ball Diamond Dust  
(231) 588-2345  
Ellsworth, Michigan 49729

### GLASS

**TWIN BAY GLASS**  
Windshield Repair and Replacement  
Complete Mirror Service  
1-800-834-3343  
06837 US-31 South • Charlevoix

### REAL ESTATE

**RE/MAX of Charlevoix**  
**Judy K. Petkewicz**  
CRS, GRI • Broker Owner  
Search all listings on Judy's website.  
701 S. Bridge St.  
Charlevoix, Michigan 49720  
Office: (231) 547-9980 ext. 13  
Cell Anytime: (231) 675-7175  
E-mail: [judy@charlevoixlake.com](mailto:judy@charlevoixlake.com) • Website: [www.remax-chx-mi.com](http://www.remax-chx-mi.com)

### CELLULAR PHONE SERVICE

**TRI-COM Cellular**  
Now featuring...  
Willow Antennas  
Nokia • Motorola • Kyocera  
LOW PRICES on ACCESSORIES  
FREE CAR CHARGER  
with New Activation and 1-Year Coverage  
NOW AVAILABLE... Expanded Local Freedom Coverage Area  
(with CDMA phones only)  
Shelly Bolser  
Sherry Shewey  
507 Water St.  
East Jordan  
581-888-0119  
Jackie Hawkins  
5851 N. 27th  
East Jordan  
581-888-0119

### FLOOR COVERINGS

Shop The Best... Then Buy From The Best!  
**CARPET Connection**  
Free Estimates  
Professional Installation  
Mon-Fri 8-6 • Sat 9-3  
322 W. Mitchell St. • Petoskey, MI 49770  
(231) 347-8844 Fax: (231) 347-0293

### OPTOMETRIST

**Dr. Steven A. Vocl**  
Optometrist  
New Patients Welcome!  
601 Bridge St.  
East Jordan, MI 49727  
536-2240  
103 Clinton  
Charlevoix, MI 49720  
547-2901  
24 Hour Emergency Care  
1-877-997-3871

### ROOFING

**HAWKINS BROS., INC.**  
INDUSTRIAL • COMMERCIAL • RESIDENTIAL  
Free Estimates • Licensed • Insured  
Bill Hawkins 06556 Camp Daggett Rd.  
Joe Hawkins (231) 582-2307 • 1-231-582-7833

# WINTER WISDOM

continued from page one

tional Weather Service website at [www.nws.noaa.gov](http://www.nws.noaa.gov).

## WORDS OF WINTER

**Winter Storm Watch:** Adverse winter weather is possible in the watch area.

**Winter Storm Warning:** Adverse winter weather will occur in the warning area.

**Heavy Snow:** Snowfall accumulating to 6 inches or more in 12 hours or 8 inches or more in 24 hours.

**Blizzard:** Three hours of sustained winds or frequent gusts to 35 mph or greater and considerable falling and/or blowing snow that frequently reduce visibility to less than 1/4 mile.

**Snow Advisory:** Three to five inches of snow is expected.

**Ice Storm Warning:** Heavy ice accumulations will cause extremely dangerous and damaging situations, such as icy roads and downed power lines.

**Freezing Rain/Drizzle Advisory:** Precipitation is light and does not form on all exposed surfaces.

**Wind Chill Warning:** issued when wind chills range from 70 below in an especially cold winter to 50 below in a "normal" winter. At minimum, a 10 mph wind should be occurring or forecasted.

**Wind Chill Advisory:** Issued when wind chills are expected to be 35 below or colder. However, one may be issued early or late in the season for wind chills from 20 below to 35 below.

**High Wind Warning:** Sustained 40 mph winds for a period of one hour or longer, or less frequent gusts of 58 mph or stronger.

**Wind Advisory:** Sustained 30 mph winds for a period of one hour or longer, or less frequent gusts of 45 mph or stronger.

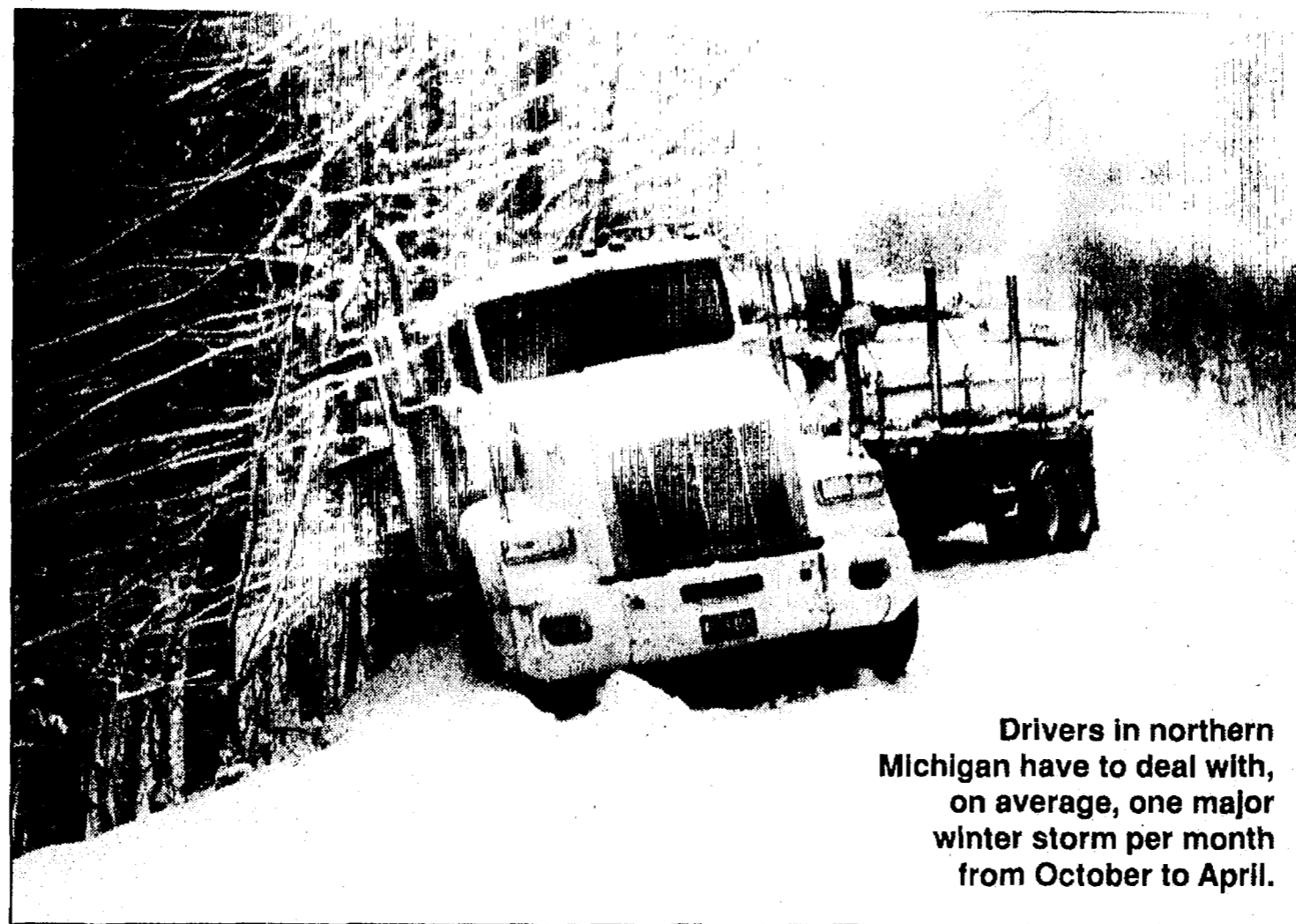
## WINTER WARNINGS

On average, a major winter storm hits part of Michigan at least once per month between October and April. Weather conditions can become extremely hazardous. People should take extra caution when driving in icy and/or snowy conditions.

The following are frequently asked questions about winter weather.

### 1. What is wind chill?

Wind chill is the perceived temperature resulting from the effect of wind, in combination with cold air, which increases the rate of heat loss from the human body.



Drivers in northern Michigan have to deal with, on average, one major winter storm per month from October to April.

### 2. What is frostbite and what can be done to treat it?

Frostbite is damage to body tissue caused by that tissue being frozen. Frostbite causes a loss of feeling and a white or pale appearance in extremities, such as fingers, toes, ear lobes, or the tip of the nose. Frostbite varies in severity from frostnip to deep frostbite, depending on the length of exposure, temperature to which the skin is exposed and wind speed. For frostnip, place firm, steady pressure from a warm hand against the area. Also, blow on the surface holding the frostnipped area against the body. Do not rub the area, apply snow or plunge it into very hot or cold water. Victims of severe frostbite must receive prompt medical attention.

### 3. What is hypothermia and what are the warning signs?

Hypothermia occurs when the body temperature drops to 95 degrees F or lower. It can develop whenever body heat loss exceeds heat gain. Hypothermia is not exclusive to winter. It can occur during the wind and rain of spring and summer. Hypothermia is often mistaken for fatigue, irritability, or dehydration and may include some of these signs: abnormal decision making; improper response to cold, apathy, lethargy; decreased cooperation; slurred speech, disorientation; shivering; stumbling; and stiffness progressing to inability to move.

### 4. How do you treat hypothermia?

**Mild to moderate hypothermia** (body temperature greater than 90 degrees, conscious, shivering, able to walk): Prevent further heat loss. Dry, remove from cold and insulate; Rewarm by warming the body core first. Rehydrate with warm broth; Seek medical attention.

**Severe hypothermia** (body temperature less than 90 degrees, unconscious, not shivering): Evacuate to rewarm; Prevent further heat loss; Seek immediate medical attention.

### 5. What are the various winter weather warnings and advisories?

• A winter storm watch indicates that severe winter weather conditions may affect the area.

• A winter storm warning indicates that severe winter conditions are imminent.

• A winter storm warning for heavy snow indicates snowfalls of at least six inches in 12 hours or eight inches in a 24-hour period are expected.

• Blizzard warnings are issued when sustained wind speeds or frequent gusts of at least 35 miles per hour are accompanied by considerable falling and/or blowing snow. Visibility is greatly reduced during a blizzard.

• Snow advisories are issued when snowfalls of four to five inches are expected in a 12-hour period for the average of the forecast range.

# JRAC sponsoring art workshops in January

Local doll artist Kathie Briggs will hold a cloth doll class entitled "Masquerade" on Saturdays, Jan. 24 and 31, at the Jordan River Art Center in East Jordan, from 9:30 a.m.-4:30 p.m. each day.

Participants will create a "Masquerade" cloth doll representing their own vision of the masked ball. Various techniques will be employed.

The Jan. 24 class will focus on color combinations, fabric manipulation, free-motion embroidery, and the sewing of most of the dolls parts as well as stuffing and joining.

On Jan. 31, participants will construct the doll's

head and wire hands, create a facade, complete assembly, and costume and embellish.

A sewing machine is required.

The class fee is \$65 per person; a full-size pattern for the doll and a supply list will be sent by mail after registration. Some pre-work will be required, as well as homework between sessions.

To register, or for more information, call Briggs at 547-4971, or e-mail her at [kjbriggs@voyager.net](mailto:kjbriggs@voyager.net).

The Jordan River Arts Council is also sponsoring Art Therapy and Quilting Workshops to be hosted in

Eastport, Mich., by arts council board member Sylvia Walworth.

Workshops are set for Friday, Jan. 16, Saturday, Jan. 17, or Wednesday, Feb. 11, from 9 a.m. - 8 p.m. each day.

The workshop sessions will feature a quilting process designed to help participants view a personal issue from different perspectives. In the one-day workshop, participants will create a quilted piece suitable to be made into a wall-hanging, a pillow or to become the center of a quilt; the piece, according to Walworth, will be unique to its creator, reflecting insight into an issue, increas-

ing understanding of self, and containing surprises, emotions, and connections.

Quilters of all levels of experience are welcome. Each workshop will be limited to seven participants, each of whom will receive

a list of materials and are required to bring their own sewing machine.

The cost is \$50.

Registration with payment can be sent to Sylvia Walworth, P.O. Box 519, Eastport, MI 49629, and

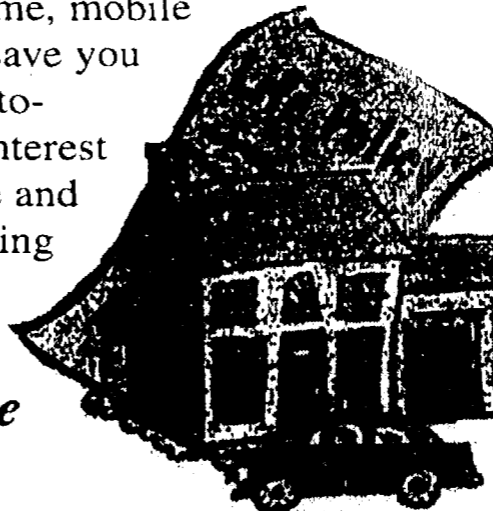
must include name, address, telephone number, and indicate the registrant's preferred workshop date.

For more information call Walworth at (231) 599-3065 or e-mail her at [jewelworth@torchlake.com](mailto:jewelworth@torchlake.com).

## Buy life insurance and save on your home and car.

When you buy life insurance from us through Auto-Owners Insurance, you'll receive special discounts on your home, mobile home or car insurance. We'll save you money. As an independent Auto-Owners agent, we take great interest in you -- as well as your home and car. We are specialists in insuring people -- and the things they own.

**Auto-Owners Insurance**  
Life Home Car Business  
*The No Problem Road.*



## Korthase Insurance & Financial Services, Inc.

**BOYNE CITY** 1150 Boyne Ave. (231) 582-6512  
**EAST JORDAN** 109 Mill Street (231) 536-2268



## Don't Grow OLD Without us...

We offer annuities and IRAs that guarantee a lifetime retirement income, **BIG TAX SAVINGS**, and attractive interest rates. Start now! Call your Farm Bureau Insurance agent before you get any older.

**MIKE HAUSLER**  
406 Boyne Ave.  
Boyne City, MI 49712  
Ph: 582-7828

Making Your Future More Predictable  
**FARM BUREAU INSURANCE**  
www.farmbureauinsurance-mi.com

## Places of Worship

**Christ Lutheran Church**  
1250 Boyne Avenue  
Boyne City, MI 49712  
(231) 582-9301  
Sunday Worship: 8 & 10:30 a.m.  
- Sunday School  
& Bible Class: 9:15 a.m.  
Kenneth G. Bernthal, Pastor  
L.C.M.S.

**Trinity Fellowship Church**  
401 State St. • Boyne City  
**582-2551**  
Pastor: Paul Wise  
Associate Pastor: Bryan Shook  
Sunday School 9:30 a.m.  
Sunday Worship 10:30 a.m.  
Wed. Family Night 7:00 p.m.  
*Everyone is Welcome!*

**East Jordan United Methodist Church**  
Corner of Fourth & Easterly  
Worship Service: 9:00 a.m.  
Sunday School: 10:00 a.m.  
**D. Michael Maurer, Pastor**  
CHURCH OFFICE: (231) 536-2161  
M-F 9:00 a.m. - NOON  
Parsonage: (231) 538-7590

## HELP US CELEBRATE OUR GRAND OPENING...

**Metropolitan Title Company**  
05 W. Main St. Boyne City  
Next to Pippin's Restaurant

**Open House and Business After Hours**  
January 7th, 2004  
5:00 P.M. - 7:30 P.M.

Refreshments will be served.

**Ribbon Cutting**  
6:00 P.M.

We hope you can join us as we celebrate.

**Boyer City School Boosters 300 Club Drawing**  
and the \$100 winner is...  
**Frank Butler**  
Jan. 3, 2004  
Thank you for your support.  
All proceeds benefit the Booster project.

**WEEKLY Health Tips**  
By Steve Czerkes Pharmacist

**HEALTH TIPS FROM MEDICAP PHARMACY**  
**Keep Your Home Safe From Carbon Monoxide**  
Hundreds of Americans die from carbon monoxide (CO) poisoning in their homes every year. Deadly levels of CO can be produced by appliances that burn gas, oil, kerosene or wood and aren't working properly or are used incorrectly. Carbon monoxide fumes can also seep into the house when cars are left idling in garages. To help prevent CO poisoning the EPA advises having your fuel-burning appliances checked by a trained professional at the start of each heating season. Equipping your home with a CO detector is also recommended.  
**582-4545 MEDICAP PHARMACY.**  
104 S. Lake St. • Boyne City  
Hours: Mon-Fri 9-6 • Sat 9-1:30  
Ample parking behind store front.

**Petokey Cinema 347-8696**  
**SOMETHING'S GOTTA GIVE** - PG-13  
7:10 & 9:25 nightly • Fri at 5  
Thurs, Sat & Sun 12, 2:15 & 5  
**BIG FISH** - PG-13  
7:05 & 9:20 nightly • Fri at 5  
Thurs, Sat & Sun 12, 2:15 & 5  
**CHASING LIBERTY** - PG-13  
7:05 & 9:15 nightly • Fri at 5  
Thurs, Sat & Sun 12, 2:15 & 5  
**MONA LISA SMILE** - PG-13  
9:20 nightly  
Thurs, Sat & Sun at 12  
**THE LORD OF THE RINGS: THE RETURN OF THE KING**  
7 nightly  
Thurs, Sat & Sun at 2  
**COLD MOUNTAIN** - R  
6:45 & 9:30 nightly  
Thurs, Sat & Sun at 12 & 3  
**PAYCHECK** - PG-13  
7:10 & 9:30 nightly • Fri at 5  
Thurs, Sat & Sun 12, 2:15 & 5  
**CHEAPER BY THE DOZEN** - PG  
7:15 & 9:15 nightly • Fri at 5  
Thurs, Sat & Sun 12, 2:10 & 5  
**PETER PAN** - PG  
7:05 nightly • Fri at 5  
Thurs, Sat & Sun 12, 2:10 & 5  
Thurs. at 2  
**Senior Day \$2.50, 4 all seats \$5**  
Adult \$6.75, Child \$5.25,  
Senior \$5.75  
Matinee all seats \$5.00  
**Bellaire Theater 533-8725**  
**PAYCHECK** - PG-13  
at 7 nightly  
**CHEAPER BY THE DOZEN** - PG  
at 7 nightly  
**Gaylord Cinema West (989) 731-9766**  
**CALL FOR SHOWTIMES**  
January 9 - 15

**At Curves, resolutions are a group effort.**  
Discover Curves, a supportive community where women help each other reach their goals through commonsense weight lose, a great thirty minute workout and a lot of laughs. Call your local Curves today for an appointment.  
**Curves**  
The power to amaze yourself™  
[www.curvesinternational.com](http://www.curvesinternational.com)  
237-0699 Charlevoix 536-3601 East Jordan 582-0699 Boyne City  
\*Offer based on first visit enrollment, minimum 12 mo. c.d. program. New members only. Valid only at participating locations.

**Outlook 2004**  
**A Turning Point for America?**  
A free video presentation.  
Join our special guest David Gergen, former White House advisor and our financial experts, as we discuss:  
• The aftermath of 2003  
• The upcoming election and its effect on the economy  
• Strategies for your portfolio in 2004  
Share your opinions and be part of an exclusive Edward Jones poll by visiting [www.edwardjones.com/outlook](http://www.edwardjones.com/outlook). You'll also find out more about the topics and guests on the broadcast.  
To reserve a seat for yourself and a relative or friend, please call or stop by. If you are unable to join us for this free special video presentation, please ask about other viewing opportunities.  
Tuesday, January 13, 2004  
11:30 a.m. & 6:30 p.m.  
Edward Jones  
**Jay Duggan**  
101 S. Lake St.  
Boyne City, MI 49712  
231-582-3416  
[www.edwardjones.com](http://www.edwardjones.com)  
Member SIPC  
**Edward Jones**  
Serving Individual Investors Since 1971  
You can e-mail us at: [citizen@voyager.net](mailto:citizen@voyager.net)

# OPINION

PAGE 4

JAN. 7, 2004

## BETWEEN THE LINES

### A love for 'Food TV' does not a culinary artist make

By ANGELA SHULTIS

Some people get a charge out of creating culinary masterpieces in the kitchen; others are connoisseurs who get their kicks partaking of fine cuisine. I, however, enjoy food most when it's part of my TV routine. I am, dare I say it, a Food Network junkie.

Now, it's not like I'm glued to the TV 24/7 — I do have a family and a full-time job to tend to. But when it's 7 p.m. on Sunday and Iron Chef is about to begin, there's no doubt about where you'll find me. After that, give me Emeril, Bobby Flay, Jamie Oliver, or even Rachel Ray, and I'll happily join the ranks of the most seasoned couch potatoes.

Only in America, as they say, would great chefs be known more for their television shows than, say, the food they cook.

The fact that there is such a thing as a "food network" is a real sign of the times in our country. We're a nation obsessed with food — it is, much more than sustenance, a form of entertainment. We love to look at it, shop for it, combine it, create with it, consume it, and talk about it later. We're overweight and unhealthy, on the whole. With the advent of cable TV, we have 24-hour access to food-related programming. And we collectively, ahem, eat it up.

Knowing this, however, doesn't seem to diminish my enjoyment of my favorite guilty pleasure.

But, while I can watch hours of food commentary and preparation I am not myself, by anyone's account, a wizard in the kitchen. Give me pasta, tomatoes, and olive oil, and I'll give you a meal you can bank on; beyond that, I'm sort of, well, hopeless. I'm not sure what it is in my constitution that gives me the inclination to voluntarily spend an hour on a Saturday afternoon watching a show about gingerbread houses but not the patience to spend half that time working out a new recipe, something I can actually feed to my family.

Perhaps it's because when I do, it never turns out quite like those masterpieces I see on the small screen.

Case in point: for New Years Eve, I'd struck upon a brilliant idea — I would bake chocolate cream pie for a dinner we'd planned to have with friends. In the hectic final hours after work and before the party, I'd assembled the ingredients and carefully followed the chosen recipe. Alas, despite the best-laid plans, my egg-tempering skills are not, it appears, up to Food Network standards.

With Emeril's voice in the back of my head, reminding me how important egg tempering is (that is, for non-foodies, bringing eggs up to the temperature of the hot dish to which you are adding them), I still managed to rush the step with disastrous results. The bottom line is that no one, even the most hard-core chocoholic, wants a pie punctuated with chunks of scrambled egg. Yuk.

A trip to the grocery store and a cheesecake purchase later, it occurred to me that perhaps, for some of us, the Food Network is kind of like ESPN for armchair quarterbacks or HGTV for home improvement addicts — those who can't, become spectators. By keeping tabs on the latest and the greatest, we feel, somehow, included.

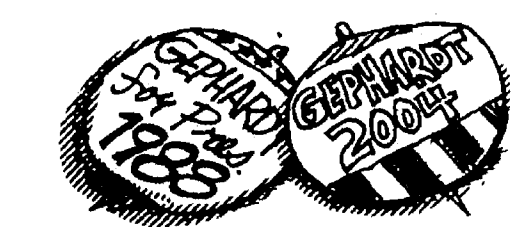
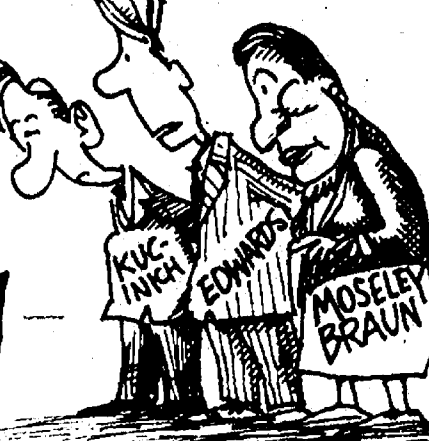
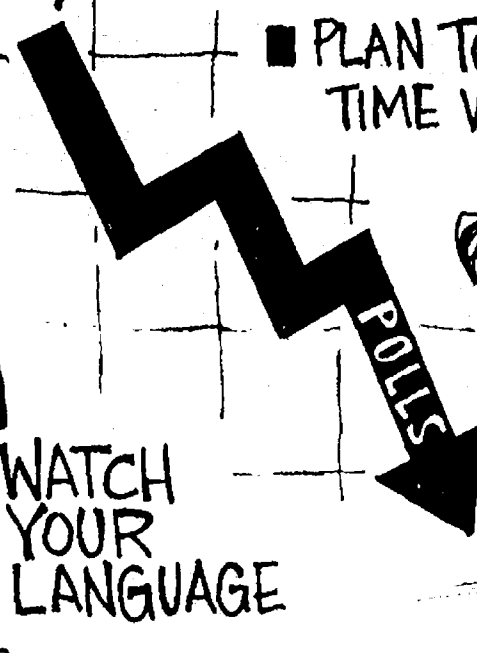
And when it comes to food, watching it on TV is certainly less fattening than the real thing.

## New Year's Resolutions 2004

■ QUIT SMOKING

■ DROP SOME WEIGHT

■ PLAN TO SPEND MORE TIME WITH YOUR FAMILY



■ GET A NEW HOBBY



■ EXERCISE MORE OR LESS

■ GIVE UP TV

## LETTERS

### Words can't express gratitude of East Jordan family

To the many community members, friends, family, co-workers, churches, businesses, firefighters, EMS, strangers and those who remain anonymous:

As I sit down to write our thank-you I struggle for the words that are appropriate. No matter how we say it, there just isn't any way to let all of you that supported us understand how much it means to us. The generosity, caring, sincerity, and compassion that we have been surrounded with was and is unexplainable.

We did not know and still do not know how we will

ever pay back or thank the many that have helped us through a very traumatic time in our life.

We received a card from a classmate that contained words that helped us to understand that what happened to us is the start of a new beginning, and that all that happens to us, happens for a special reason.

Each one of you has helped us gain faith, strength, patience and persistence. You have helped us to remember that everything really is going to be okay. We have been blessed to have a community as strong and determined as

ours. We wanted to reach as many people as we could with this thank you and hope that it is not too informal. You all have been our guardian angels, and as we said before no words can express how much we appreciate your support and caring.

God Bless all of you and your families.

Love,  
Mike, Mandy, Lauren and Madi Peterson

## BACKWARD GLANCE



### Hoop stars

With boys basketball in full swing, it seemed like an appropriate time to feature this historic photo, featuring a team from Boyne's basketball past. Anyone recognize these eager young athletes? If readers can identify any or all of the players, we'll print their names, and any other interesting tidbits about the basketball program of the time (circa 1923) in an upcoming issue of The Citizen-Journal. Send responses by e-mail to citizen@voyager.net, or to P.O. Box A, Boyne City, MI 49712.

## WE WELCOME YOUR LETTERS TO THE EDITOR.

The best read letters are brief and on a topic of local interest.

Our deadline is Friday at 5 p.m.

Letters will be printed on a space-available basis.

## The Citizen Journal

112 South Park • P.O. Box A  
Boyne City, Michigan 49712  
(231) 582-8761 Fax 582-6762  
email: citizen@voyager.net

Mail subscription rates: Within Charlevoix County, \$27.50 per year; elsewhere in the United States, \$35 per year. Periodicals postage paid at Boyne City, Michigan, 49712 (USPS 396480).

The Citizen-Journal is owned by Up North Publications, a division of 21st Century Newspapers. Copyright 2003, Up North Publications. The paper is published Wednesdays. Deadline for news, public notices and display advertising is 5 p.m. Friday; classified advertising 10 a.m. Monday. Office hours are 9 a.m. - 5 p.m. Monday - Friday.

Publisher .....Hugh Conklin  
Editor .....Angela Shultis  
Advertising Consultant .....Jane Norton  
Office Manager .....Amanda MacNaughton  
Distribution .....Jeannine Stetz  
Contributors .....Nancy Northup,  
Vic Ruggles, Cindi Place



The Citizen-Journal  
P.O. Box A  
Boyne City, Mich. 49712

Name: \_\_\_\_\_  
Address: \_\_\_\_\_  
City: \_\_\_\_\_  
State: \_\_\_\_\_ Zip: \_\_\_\_\_  
 In-county subscription \$27.50  New  
 Out-of-county subscription \$35  Renewal

# NEIGHBORS

By NANCY NORTHUP

**YOUNGER BROTHER**, Mike Northup of Eastpointe, spent Christmas and overnight with our mother on Anderson Road, and was a great "Santa" as Nels and Louisa and I were there for a wonderful day of dinner and a gift exchange and enjoying family closeness, in calls that came in from all over!

**BUD AND SHARON (KANE)** Jolly, spent the week of the holidays here with her mother, Bonnie Kane, at the family home on west Cedar Street in Boyne City. During the week, they also spent time with her dad, Gordon, at the new Grandvue facility in East Jordan.

**MARK AND SHEILA ZINCK** and son Ardy of Grand Rapids recently visited with his mother, Meta, and family.

**THE COUSINS** Band, Ed Clark of East Jordan, Leonard Brooks of Boyne City, Win Sluyter of Petskey, and Gordon Howie of Boyne City, received many rounds of applause during their New Year's Eve entertainment at Litzenburger Place. Having just come from performing at Grandvue, they still had plenty of "gusto" in their great music, creating memories, including respectful patriotic and prayer moments, as well as youthful times as a few brave ladies danced, swayed, bounced or tapped, with great delight! Joined by their wives, band members and residents mingled as they enjoyed a variety of pizzas and taco salad. Many stayed for the 2004 countdown. Accolades also go out to the musical group The Lopers, who had been here on Monday night, and Phyllis Tison, Mabel Knapp, Pat Hayden and others, who put in many hours preparing beautiful decorations, activities, nice tables and serving refreshments throughout the holidays

at Litzenburger Place.

**THE EVER-FAITHFUL** Boyne City High School class of '47 Christmas Party was held at BC Pizza on Dec. 16. Attending for an exchange of gifts and good visiting were Harriet Urman, Arlene Skop, Arlene Moore, Peg Crozier, Helen Anzell, Opal Washburn, Barbara Erfourth, and Leona Stanek.

**HAROLD AND LUCY PRICE** and Bryan and Pam Price and sons Tyler and Trevor have returned to Boyne City after having spent the holidays in Ohio with their daughter and husband Penny and Mark Petruskey, where they enjoyed an actual "white" Christmas, attending church together, lots of fun, good food and gifts for all!

**HEARTFELT SYMPATHIES** go out to the family and friends of Michael Genson, Craig Farell and Nathan Hall, all relatively young men, who passed away this past week.

**PRISCILLA AND AL PAPANI** of Wisconsin were visiting in the area during the holidays. Priscilla visited with her mother, Phyllis Tison, and other local family members.

**AN OVERDUE**, "Welcome Neighbor!" goes out to Freda McCallum, (daughter of Fern Shaler) who recently moved into Litzenburger Place.

"A DREAM Come True" it is for Judy Planck of Walloon Lake! Judy received a real surprise Christmas gift — a Caribbean Cruise — from her daughter Pam. "It's really wonderful, something I've wanted to do all my life," said Judy. In March she, Pam, her sister-in-law, Glenda Planck, and her sister Barbara Laughbaum of Pellston will share the "dream" trip together.

**FRANK SHALER** of Boyne City was the honoree of a "surprise" early 50th birthday on Jan. 1. About 100 family members and friends did pretty well, keeping the secret and having a fun time at the Advance Board of Commerce Building on Saturday afternoon. Coming from a distance to join in this special time was his daughter, Becky and Rylan Kahly of Holland. Hosting lunch and cake at the gathering was Frank's wife Connie, daughter Michelle Seelye, grandparents, Frank and Ann Shaler, Aunt Sally Pasque and others.

**HOME FOR THE** holidays with the Dave and Robin Bricker family were daughters, Molly of Santa Cruz, California, Emily, a student at Northland College in Wisconsin, and Samantha, a student at Aquinas, near Grand Rapids.

**MICHELLE AND STEVE MCCREADY** along with daughter, Abby visited Michigan from Greenville, S.C. during the Christmas Holiday. Michelle visited with her father, Joe (Debbie) Froats from East Jordan. Also her grandparents, Janet and Jim Shepherd and great-grandmother, Phyllis Tison. They enjoyed time from the busy schedule to take some five generation pictures. Steve also has family in the East Jordan area.

**ONE OF MY** Sunday callers gave me a chuckle for the day by saying, "Hey, why don't you get on your broomstick and get out of town!" A white Christmas we had, but irked (all in good humor) that my holiday prediction that all this snow would be gone by the New Year, came true—for this weekend, anyway. The official forecast has more coming. So, "be happy" winter sport fans!

(To submit an item for Nancy's column, call her at 582-9174 or e-mail at neighbors@gtlakes.com)

# BOYNE FALLS SCHOOL HONOR ROLL

**4.0 GPA**  
**Sixth grade:** Rianne Coale, Kathryn Fraser; **9th grade:** Craig Reynolds;  
**10th grade:** Annie Pernicano; **11th grade:** Brittany Matelski, Ashley Mauchmar; **12th grade:** Crystal Morris, Megan Pernicano, Jeremy Reynolds, Stephen Ward

**3.5-3.99 GPA**  
**Sixth grade:** Justin Aytes, Taylor Puroll, Samantha Sobleski, Francesca Surdam; **7th grade:** Hunter Brisson,

Cynthia Davis, Roslyn Fiel, Allie Jepsen, Amber Simon, Sharmai Wheaton, Whitney Woiteshek; **8th grade:** Alisha Dell, Elaine Jarema, Vicki King, Ryan Matelski, Kassie McClellan, Aurieelle Thompson, Terra Wasylewski; **9th grade:** Shane Garred, Matthew Massey; **10th grade:** Katlyn Jarema, Tiffany Matelski, Trevor Matelski, Nathan Wasylewski; **11th grade:** Clayton Peck; **12th grade:** Melissa Anthony, Joshua Blackwell, Aaron Brown, Thomas Jepsen, Kandace Kowalski

**3.0-3.49 GPA**  
**Sixth grade:** Kayla Hausler, Kaleb Knapp; **7th grade:** Aliasha Chapman; **8th grade:** Chad Deming, Angela Dunlop, David Gross, Josh Haskin, Tim Kondrat, Amanda Neill, Kala Sobleski; **9th grade:** Martin Black, Isaac Erber, Kellie Kondrat, Andy Reynolds, Glynnie Surdam; **10th grade:** Tiffany Burks, Shawn Kilmer, Darryl Kowalski; **11th grade:** Daniel Clark, Jessica Massey, Adam Rapaehl, Nathen Reynolds; **12th grade:** Megan Lewin

# CLUBS AND ORGANIZATIONS

## American Legion

At the regular meeting of Ernest Peterson Post 228, held on Dec. 4, a thank you card was read from Peg Crozier for the donation to the Alzheimer Walk-a-Thon.

The Honor Guard conducted Veteran of the Month ceremonies for Donald Trojanek and Robert Tobias and a graveside service for James Timms.

Chaplains Gondzar and Cosier reported on area veterans who are sick, disabled, shut-in or have answered the final call. They also reported that Grandvue has 12 veterans who have all received their American and branch of service flags.

Post donated a new American flag. The next regular meeting will be held on Jan. 8 and will be preceded by the Veteran of the Month ceremony at 6:15 p.m. followed by a potluck supper. All area veterans are welcome.

The next regular meeting will be held on Jan. 8 and will be preceded by the Veteran of the Month ceremony at 6:15 p.m. followed by a potluck supper. All area veterans are welcome.

## Piece Makers

Piece Maker quilters will meet on Jan. 8 at 7 p.m. in the Boyne Library. After the general meeting work on the community project will continue. Bring fabric and batting to donate, cutting supplies,

and a white elephant item to exchange. Those attending can sign up for this year's activities. New members are welcome to attend. Call Darlene, 582-6206 for more information.



## THANK YOU

to the following sponsors for your support in my participation at the 2003 MLI Regional Modeling Review in Detroit:

- Bay Winds Federal C.U.
- Brent Cadarette - Above All Construction
- Heidi Nelson - Great Beginnings Childcare
- Sue Grobowski - Century 21 Up North

Lexi Himmelspach

# COMMUNITY CALENDAR

**FOOD PANTRY Every Sunday**  
 The East Jordan Baptist Church holds a food pantry every Sunday from 3-5 p.m. at the church located at 812 Ontario Street. For more information, call 536-7155.

**EJ FOOD PANTRY Monday & Thursday**  
 The East Jordan Food Pantry is located at 601 Bridge St., in the basement of the Health Center. Pickup or donation hours are Monday and Thursday from 9 a.m.-12 noon.

**OES CHAPTER 95 First Monday**  
 The OES Evangline Chapter 95 meets the first Monday of each month at 7:30 p.m. in the Masonic Lodge, 212 N. Lake Street. All OES members are invited. For membership, call 582-6819 or 582-0506.

**BOYNE FOOD PANTRY First & third Mondays**  
 Food pick-up hours are on the first Monday of the month from 10 a.m.-noon and third Monday from 5-7 p.m., or on Tuesday if a holiday falls on Monday. The food pantry is located at 401 State Street.

**JORDAN VALLEY VFW MEETING Second Tuesday**  
 A meeting of the Jordan Valley VFW Post 7580 is held at 7:30 p.m. on the second Tuesday of each month at the East Jordan VFW Hall. For more information call 544-5312.

**KIWANIS OF BOYNE Thursdays**  
 Interested persons are invited to join the Kiwanis of Boyne for coffee, camaraderie, and community service every Thursday morning at 7 a.m. at Robert's Restaurant in Boyne City.

**GRANDVUE AUXILIARY Second Thursday**  
 The Grandvue Auxiliary meets the second Thursday of each month, except for

the months of January and February, when no meetings are held. For more information, call 582-6278.

**VETERAN ASSISTANCE Thursdays**  
 A Service Officer will be at the American Legion Post #228 of Boyne City every Thursday from 4-6 p.m. Any veteran seeking assistance may visit the Post at the corner of Lake and Main streets or call 582-7811 at that time.

**AA MEETINGS Weekly**  
 The Boyne Valley Group of AA meets in the basement of St. Matthew's, 1303 Boyne Ave., Boyne City. Times: Sunday 1 p.m.; Monday 12 noon, 8 p.m.; Tuesday 12 noon; Wednesday 12 noon (Big Book Study); Thursday 12 noon, 6:30 p.m. (Big Book/Step


Study), 8 p.m.; Friday 12 noon, 8 p.m.

**ALANON Thursday nights**  
 Al-Anon meetings are held at 6:30 p.m. at St. Matthew's Church, 1303 Boyne Ave., Boyne City.

To have an event included in the Community Calendar, call 582-6761.


## The Power of Human Connections

*The Power of Reliability*



Power means knowing that I can count on reliable service from my electric co-op, Great Lakes Energy.

**Annalisa P. Horton, DVM**  
 Oceana Veterinary Service, PC  
 Great Lakes Energy Owner  
 New Era, Michigan

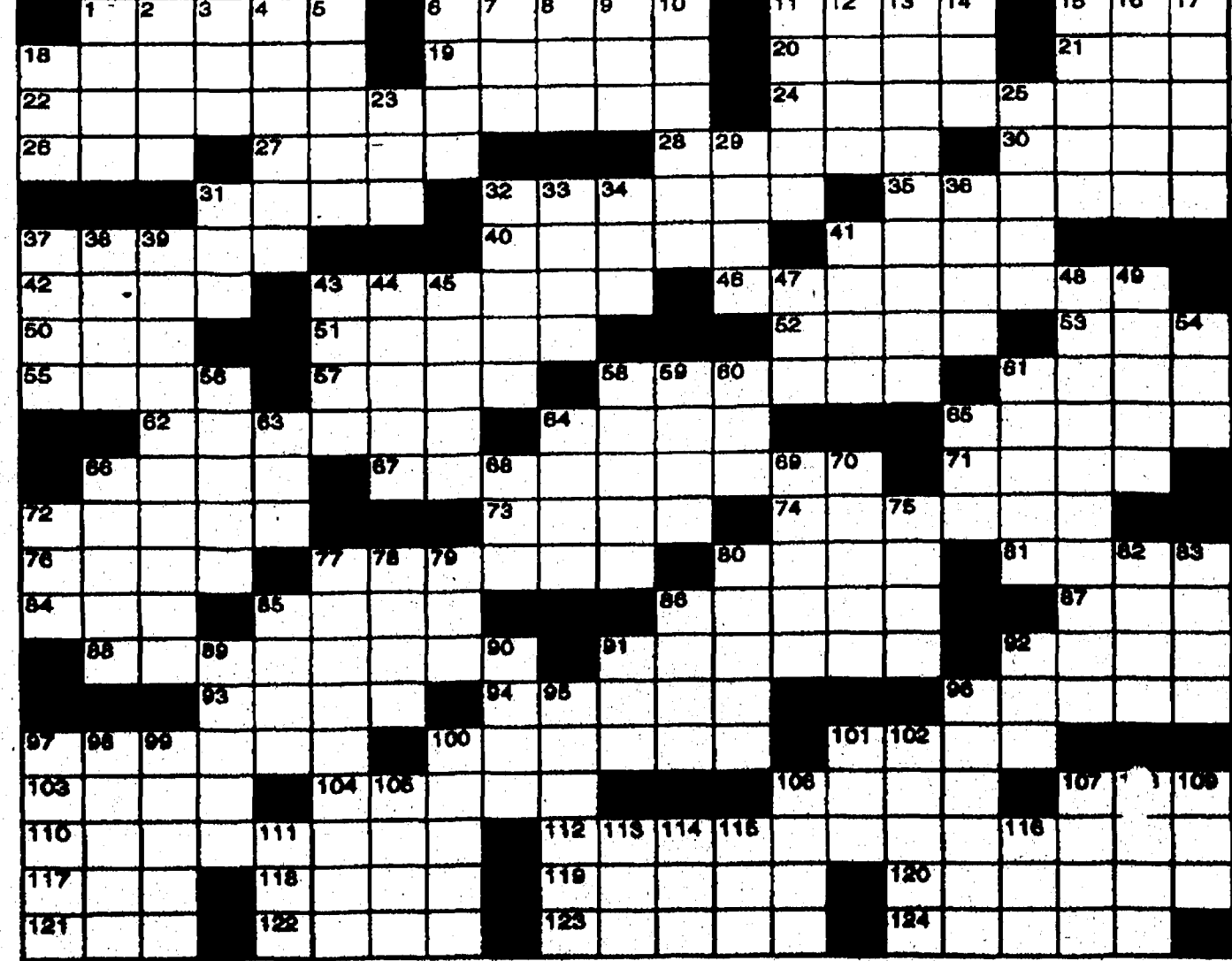


**Great Lakes ENERGY**  
 A Touchstone Energy® Cooperative

[gtlakes.com](http://gtlakes.com)

# Super Crossword GENE POOL

- |   |   |   |   |   |
|---|---|---|---|---|
| <p><b>ACROSS</b></p> <p>1 "Lili" actress<br/>                 6 Decorous<br/>                 11 Jack of "Rio Lobo"<br/>                 15 With<br/>                 10 Down.<br/>                 "Cheers" star<br/>                 18 Entice<br/>                 19 It's tossed with sauce<br/>                 20 Waiter's offering<br/>                 21 Medical grp.<br/>                 22 Gene Barry role<br/>                 24 Gene Autry's horse<br/>                 26 Maestro de Waart<br/>                 27 Evened the score<br/>                 28 Prophets<br/>                 30 "So — You" (77 song)<br/>                 31 Torrid or Frigid<br/>                 32 Bluesman James<br/>                 35 Le Carre title start<br/>                 37 Zeal<br/>                 40 Tea of "Deep Impact"<br/>                 41 Diplomacy<br/>                 42 Libertine<br/>                 43 "Macbeth" role<br/>                 46 Kind of sale<br/>                 50 Vex<br/>                 51 Linda of "Dynasty"<br/>                 52 Revise a manuscript</p> | <p>53 Start to snooze<br/>                 55 Colors<br/>                 57 Gouda garbage<br/>                 58 Schedule<br/>                 61 Fluffy<br/>                 62 Annetie of "48HRS."<br/>                 64 Privy to<br/>                 65 Refuse<br/>                 66 Out of range<br/>                 67 Gene Sarazen invention<br/>                 71 Architect Saarinen<br/>                 72 "Die Fledermaus" maid<br/>                 73 "Oh, woe!"<br/>                 74 Irrational<br/>                 76 Stocking<br/>                 77 Torrid or Frigid<br/>                 80 Scenter of your face?<br/>                 81 — de-camp<br/>                 84 Blunder<br/>                 85 Top-notch<br/>                 86 Fido's friend<br/>                 87 Fido's physician<br/>                 88 Silver-tongued<br/>                 91 Not long ago<br/>                 92 Kid<br/>                 93 Litter's littlest<br/>                 94 Mead's "Coming — in Samoa"</p> | <p>96 Trier<br/>                 "Thanks!"<br/>                 97 "Cafe" (88 film)<br/>                 100 Popped one's peccs<br/>                 101 Actress Verdon<br/>                 103 Farm measure<br/>                 104 Swap<br/>                 106 Shopping center<br/>                 107 Zoo attraction<br/>                 110 Gene Roddenberry creation<br/>                 112 Gene Krupa's bandleader<br/>                 117 Sky light?<br/>                 118 Part of NB<br/>                 119 Stalin's predecessor<br/>                 120 Stereo components<br/>                 121 Choose, with "for"<br/>                 122 Bird food<br/>                 123 "Maria —" (41 song)<br/>                 124 Clear the slate</p> <p><b>DOWN</b></p> <p>1 "— All Over" (84 hit)<br/>                 2 Choir member<br/>                 3 Caddy<br/>                 4 Wind instrument?</p> | <p>5 Vamish ingredient<br/>                 6 Tore<br/>                 7 Pine product<br/>                 8 Burro<br/>                 9 Robert of "Quincy, M.E."<br/>                 10 See<br/>                 15 Across<br/>                 11 Roast host<br/>                 12 Annealing oven<br/>                 13 '56 Ingrid Bergman film<br/>                 14 Silent<br/>                 15 Use one's noodle<br/>                 16 Overact<br/>                 17 Patron<br/>                 18 Vigoda or Fortas<br/>                 23 Placekicker's prop<br/>                 25 It's spotted out West<br/>                 29 Lexicographer<br/>                 Partridge<br/>                 31 Actress Wanamaker<br/>                 32 African antelope<br/>                 33 "Why don't we?"<br/>                 34 Berg or Drabowsky<br/>                 36 "New Jack City" actor<br/>                 37 Saharan<br/>                 38 Actor Calhoun</p> | <p>80 Big-name Chandler hit<br/>                 82 Secretary, e.g.<br/>                 83 Diminutive suffix<br/>                 85 Blue hue<br/>                 86 Iniquities<br/>                 89 Court cry<br/>                 90 Spilled the beans<br/>                 91 Negligent<br/>                 92 Tenor<br/>                 95 Weak<br/>                 96 Circuitous<br/>                 97 Lowdown crooner?<br/>                 98 Behave like a brat<br/>                 99 Endowment<br/>                 100 Pretended<br/>                 101 Berle bit<br/>                 102 Knocked out a novel<br/>                 105 Artist<br/>                 Magritte<br/>                 106 Sociable<br/>                 107 The —<br/>                 108 Reduce, with "down"<br/>                 109 USNA grad<br/>                 111 Recipe abbr.<br/>                 113 Conger or moray<br/>                 114 Compass pt.<br/>                 115 Palindromic diarist<br/>                 116 "Jurassic Park" stuff</p> |
|---|---|---|---|---|



**PUBLIC NOTICES**

**THIS FIRM IS A DEBT COLLECTOR ATTEMPTING TO COLLECT A DEBT. ANY INFORMATION OBTAINED WILL BE USED FOR THAT PURPOSE. PLEASE CONTACT OUR OFFICE AT THE NUMBER BELOW IF YOU ARE IN ACTIVE MILITARY DUTY.**

**MORTGAGE SALE -** Default has been made in the conditions of a mortgage made by Michael R. Karlskin and Eileen M. Karlskin, husband and wife, to Option One Mortgage Corporation, mortgagee, dated Dec. 12, 2001 and recorded Dec. 20, 2001 in Liber 449, Page 815, Charlevoix County Records. There is claimed to be due on such mortgage the sum of Seventy-Seven Thousand Two Hundred Forty-Eight and 48/100 Dollars (\$77,248.48) including interest at the rate of 10.1% per annum.

Under the power of sale contained in the mortgage and the statutes of the State of Michigan, notice is hereby given that the mortgage will be foreclosed by a sale of the mortgaged premises, or some part of them, at public venue at the main lobby of Charlevoix County Courthouse in Charlevoix in Charlevoix County, Michigan at 11 a.m. on Jan. 9, 2004.

The premises are located in the Township of Wilson, Charlevoix County, Michigan, and are described as:

Commencing at a concrete monument at the West quarter corner of Section 1, Township 32 North, Range 6 West; thence South 89 degrees 36 minutes 59 seconds East 1405.27 feet along the East and West quarter line of said section, as monumented, to a point in the centerline of the Boyne City-East Jordan Road for the point of beginning of this description; thence continuing along said East and West quarter line South 89 degrees 36 minutes 59 seconds East 49.58 feet to a 1/2 inch rod on the Easterly right-of-way line of said road; thence continuing along said quarter line South 89 degrees 36 minutes 59 seconds East 335.79 feet to a 1/2 inch rod; thence North 0 degrees 23 minutes 01 seconds East 199.49 feet to a 1/2 inch rod on the Southerly right-of-way line of Dietz Road; thence continuing North 00 degrees 23 minutes 01 seconds East 34.27 feet to the centerline of said road; thence along the centerline of said road North 73 degrees 58 minutes 00 seconds West 427.40 feet to the centerline of said Boyne City-East Jordan Road; thence along the centerline of said Boyne City-East Jordan Road on a curve to the right 192.59 feet (radius 1037.73 feet, the delta is 10 degrees 38 minutes 00 seconds and the chord bears South 01 degree 42 minutes 04 seconds East 192.31 feet); thence continuing along the centerline of the aforementioned road South 03 degrees 36 minutes 56 seconds West 149.37 feet to the point of beginning; being a part of the Southeast Quarter (SE 1/4) of the Northwest Quarter (NW 1/4) of Section 1, Township 32 North, Range 6 West.

Property contains mobile home: Vin/serial #: 30152D Manufacturer: Dutch Housin Inc. Year of Manufacture: 2000 Width: 40 Length: 23

The redemption period shall be 6 months from the date of such sale, unless the property is determined abandoned in accordance with MCL 600.3241a, in which case the redemption period shall be 30 days from the date of the sale. The foreclosing mortgagee can rescind the sale in the event a third party buys the property and there is a simultaneous resolution with the borrower.

Dated: Dec. 10, 2003

**ORLANS ASSOCIATES PC**  
Attorneys for Option One Mortgage Corporation, As Mortgagee  
P.O. Box 5041  
Troy, MI 48007-5041  
(248) 457-1000  
File No. 221.1212

**NOTICE OF FORECLOSURE SALE**  
Default having been made in the terms and conditions of a certain mortgage made by Richard S. Goodrich, a single man, of 05303 Kuzmik Road, Elmira, Michigan 49730 to FIRST NATIONAL BANK OF GAYLORD, 501 W. Main Street, Gaylord, Michigan 49735, dated April 25, 2002 and recorded in the office of the Register of Deeds, for the County of Charlevoix, and State of Michigan, on April 29, 2002, in Liber 468 Pages 416 through 422 Charlevoix County Records, and which was modified by Mortgage Modification Agreement dated Nov. 29, 2002 and recorded in the office of the Register of Deeds, for the County of Charlevoix, and State of Michigan, on July 2, 2003, in Liber 551 Page 953, Charlevoix County Records, and on which there is claimed to be due, at the date of this notice, for principal, interest and late fees, the sum of \$128,226.81.

As no suit or other legal proceedings have been filed to recover the debt secured by the Mortgage; Now, therefore, by virtue of the power of sale contained in the mortgage, and pursuant to the statutes of the State of Michigan, NOTICE is hereby given that on Friday, the 6th day of February, 2004 at 11 o'clock a.m. the mortgage will be foreclosed by a sale at public auction to the highest bidder, at the main entrance to the County Building in the City of Charlevoix, Charlevoix County, Michigan of that premises described in the mortgage, or so much thereof as may be necessary to pay the amount due, on the mortgage, with interest thereon at the contract rate and all legal costs, charges and expenses, including the attorney fees allowed by law, and also any sums which may be paid by the mortgagee to protect its interest in the premises.

The premises are described as follows:  
Land situated in the Township of Hudson, County of Charlevoix, State of Michigan, and is described as follows:  
The South 1/2 of the South 1/2 of the Southeast 1/4 of the Northeast 1/4 of Section 31, Township 32 North, Range 4 West.  
The redemption period shall be one (1) year from the date of such sale, unless the property is determined abandoned in accordance with MCL 600.3241a, in which case the redemption period shall be thirty (30) days from the date of the sale.

Dec. 18, 2003

**BODMAN, LONGLEY & DAHLING LLP**  
By: Sandra L. Jasinski (P37430)  
Debt Collector for First National Bank of Gaylord  
229 Court Street,  
P.O. Box 405  
Cheboygan MI 49721  
(231) 627-4351

**THIS FIRM IS A DEBT COLLECTOR ATTEMPTING TO COLLECT A DEBT. ANY INFORMATION OBTAINED WILL BE USED FOR THAT PURPOSE. PLEASE CONTACT OUR OFFICE AT THE NUMBER BELOW IF YOU ARE IN ACTIVE MILITARY DUTY.**

**MORTGAGE SALE -** Default has been made in the conditions of a mortgage made by John Heric Bennett and Diane Bennett, husband and wife, to New Century Mortgage Corporation, mortgagee, dated Nov. 29, 2002 and recorded Jan. 9, 2003 in Liber 510, Page 143, Charlevoix County Records. Said mortgage is now held by New Century Home Equity Loan Trust Series 2003-1 Asset Backed Pass-through Certificate by assignment submitted to and recorded by the Charlevoix County Register of Deeds. Servicers Affidavit submitted to and recorded by the County of Charlevoix to correct the legal description. There is claimed to be due on such mortgage the sum of One Hundred Fifty-Seven Thousand Twenty-Five and 23/100 Dollars (\$157,025.23) including interest at the rate of 8.99% per annum.

Under the power of sale contained in the mortgage and the statutes of the State of Michigan, notice is hereby given that the mortgage will be foreclosed by a sale of the mortgaged pre-

misses, or some part of them, at public venue at the main lobby of Charlevoix County Courthouse in Charlevoix in Charlevoix County, Michigan at 11 a.m. on Jan. 16, 2004.

The premises are located in the Township of Eveline, Charlevoix County, Michigan, and are described as:

Lot A, the North 330 feet of the Southwest 1/4 of the Southeast 1/4 of Section 15, Town 33 North, Range 7 West.

The redemption period shall be 6 months from the date of such sale, unless the property is determined abandoned in accordance with MCL 600.3241a, in which case the redemption period shall be 30 days from the date of the sale. The foreclosing mortgagee can rescind the sale in the event a third party buys the property and there is a simultaneous resolution with the borrower.

Dated: Dec. 17, 2003

**ORLANS ASSOCIATES PC**  
Attorneys for New Century Home Equity Loan Trust, As Assignee  
P.O. Box 5041  
Troy, MI 48007-5041  
(248) 457-1000  
File No. 222.0023

**THIS FIRM IS A DEBT COLLECTOR ATTEMPTING TO COLLECT A DEBT. ANY INFORMATION OBTAINED WILL BE USED FOR THAT PURPOSE. PLEASE CONTACT OUR OFFICE AT THE NUMBER BELOW IF YOU ARE IN ACTIVE MILITARY DUTY.**

**MORTGAGE SALE -** Default has been made in the conditions of a mortgage made by Scott W. Linzey, Kathy E. Linzey, Husband and Wife, to Mortgage Electronic Registration Systems, Inc., mortgagee, dated May 30, 2001 and recorded June 4, 2001 in Liber 421, Page 520, Charlevoix County Records. There is claimed to be due on such mortgage the sum of One Hundred Six Thousand Nine Hundred Fifty-Four and 44/100 Dollars (\$106,954.44) including interest at the rate of 7.875% per annum.

Under the power of sale contained in the mortgage and the statutes of the State of Michigan, notice is hereby given that the mortgage will be foreclosed by a sale of the mortgaged premises, or some part of them, at public venue at the main lobby of Charlevoix County Courthouse in Charlevoix in Charlevoix County, Michigan at 11 a.m. on Jan. 30, 2004.

The premises are located in the Township of Wilson, Charlevoix County, Michigan, and are described as:

Commencing at a 1/2" rod at the East quarter corner of Section 11, Township 32 North, Range 6 West; thence Along the East and West quarter line of said Section South 88 degrees 53 minutes 1 second West 1318.24 feet to a 1/2" rod on the East eighth line of said section being the Point of Beginning of this description; thence continuing along said quarter line South 88 degrees 53 minutes 41 seconds West 659.12 feet to a 1/2" rod; thence North 0 degrees 39 minutes 09 seconds West 652.94 feet to a 1/2" rod; thence North 88 degrees 53 minutes 03 seconds East 658.69 feet to a 1/2" rod on said eighth line; thence along said eighth line South 0 degrees 41 minutes 27 seconds East 653.06 feet to the Point of Beginning being a part of the Southwest 1/4 of the Northeast 1/4 of Section 11, Township 32 North, Range 6 West per survey prepared by John E. Ferguson, LLS # 24595; EXCEPTING THEREFROM, Commencing at a 1/2 inch rod at the East quarter corner of Section 11, Township 32 North, Range 6 West; thence along the East and West quarter line of said section South 88 degrees 53 minutes 41 seconds West 1753.84 feet to a 1/2 inch rod being the point of beginning of this description; thence continuing along said quarter line South 88 degrees 53 minutes 41 seconds West 223.52 feet to a 1/2 inch rod; thence North 0 degrees 39 minutes 09

seconds West 652.94 feet to a 1/2 inch rod; thence North 88 degrees 53 minutes 03 seconds East 658.69 feet to a 1/2 inch rod on the East eighth line of said section; thence along said eighth line South 0 degrees 41 minutes 27 seconds East 653.06 feet to a 1/2 inch rod; thence South 0 degrees 41 minutes 27 seconds West 300.00 feet to the point of beginning, being a part of the Southwest Quarter of the Northeast Quarter of Section 11, Township 32 North, Range 6 West.

The redemption period shall be 12 months from the date of such sale, unless the property is determined abandoned in accordance with MCL 600.3241a, in which case the redemption period shall be 30 days from the date of the sale. The foreclosing mortgagee can rescind the sale in the event a third party buys the property and there is a simultaneous resolution with the borrower.

Dated: Dec. 31, 2003

**ORLANS ASSOCIATES PC**  
Attorneys for Mortgage Electronic Registration Systems, Inc., As Mortgagee  
P.O. Box 5041  
Troy, MI 48007-5041  
(248) 457-1000  
File No. 280.0756

utes 48 seconds West 160.00 feet to a 1/2 inch rod on the East line of said easement; thence continuing North 89 degrees 57 minutes 48 seconds West 40.00 feet to the point of beginning; being a part of government lot 2, Section 30, Township 33 North, Range 6 West.

The redemption period shall be 6 months from the date of such sale, unless determined abandoned in accordance with MCL 600.3241a, in which case the redemption period shall be 30 days from the date of such sale.

Dated: Dec. 24, 2003

For more information, please call:  
FC G 248.593.1313  
Trott & Trott, P.C.  
Attorneys For Bank One, N.A.  
30400 Telegraph Rd  
Ste 200  
Bingham Farms, Michigan 48025-5822  
File #005185F01

**THIS FIRM IS A DEBT COLLECTOR ATTEMPTING TO COLLECT A DEBT. ANY INFORMATION OBTAINED WILL BE USED FOR THAT PURPOSE. PLEASE CONTACT OUR OFFICE AT THE NUMBER BELOW IF YOU ARE IN ACTIVE MILITARY DUTY.**

**MORTGAGE SALE -** Default has been made in the conditions of a mortgage made by Lester E. Stark, a single man and Marcia L. McNitt, as joint tenants with full rights to survivorship, to Saxon Mortgage, Inc., mortgagee, dated Aug. 24, 1999 and recorded Sept. 9, 1999 in Liber 371, Page 607, Charlevoix County Records. Said mortgage is now held by JPMorgan Chase Bank f/k/a The Chase Manhattan Bank successor by merger to Chase Bank of Texas, National Association, f/k/a Texas Commerce Bank, N.A. as Custodian by assignment dated Aug. 24, 1999 and recorded on Sept. 9, 1999 in Liber 371, Page 619, Charlevoix County Records. There is claimed to be due on such mortgage the sum of Fifty-Six Thousand Three Hundred Sixty-Nine and 21/100 Dollars (\$56,369.21) including interest at the rate of 12.75% per annum.

Under the power of sale contained in the mortgage and the statutes of the State of Michigan, notice is hereby given that the mortgage will be foreclosed by a sale of the mortgaged premises, or some part of them, at public venue at the main lobby of Charlevoix County Courthouse in Charlevoix in Charlevoix County, Mich. at 11 a.m. on Jan. 23, 2004.

The premises are located in the Village of Boyne Falls, Charlevoix County, Mich., and are described as:  
Lots 7 and 8, Block 13, Addition No. 2 to the Village of Boyne Falls, according to the plat recorded in Liber 1 of Plats, Page 18, Charlevoix County Records.

The redemption period shall be 6 months from the date of such sale, unless determined abandoned in accordance with MCL 600.3241a, in which case the redemption period shall be 30 days from the date of such sale.

Dated: Dec. 31, 2003

For more information, please call:  
FC S 248.593.1304  
Trott & Trott, P.C.  
Attorneys For Chase Manhattan Mortgage Corporation  
30400 Telegraph Rd  
Ste 200  
Bingham Farms, Michigan 48025-5822  
File #007922F01

**NOTICE OF MORTGAGE FORECLOSURE SALE**  
**THIS FIRM IS A DEBT COLLECTOR ATTEMPTING TO COLLECT A DEBT. ANY INFORMATION OBTAINED WILL BE USED FOR THAT PURPOSE. PLEASE CONTACT OUR OFFICE AT THE NUMBER BELOW IF YOU ARE IN ACTIVE MILITARY DUTY.**

**MORTGAGE SALE -** Default has been made in the conditions of a mortgage made by Rebecca Bowers, a single woman, original mortgagor(s), to Bank One, N.A., Mortgagee, dated Jan. 14, 2002, and recorded on Feb. 1, 2002 in Liber 456 on Page 394, in Charlevoix county records, Michigan, on which mortgage there is claimed to be due at the date hereof the sum of Forty-Two Thousand Three Hundred Nineteen And 23/100 Dollars (\$42,319.23), including interest at 7.5% per annum.

Under the power of sale contained in said mortgage and the statute in such case made and provided, notice is hereby given that said mortgage will be foreclosed by a sale of the mortgaged premises, or some part of them, at public venue, at the Main lobby of the Charlevoix County Courthouse in Charlevoix at 11 a.m., on Jan. 23, 2004.

Said premises are situated in Township of Eveline, Charlevoix County, Mich., and are described as: Commencing at a monument at the South quarter corner of section 30, Township 33 North, Range 6 West; thence along the North and South quarter line of said section, as monumented, North 00 degrees 00 minutes 44 seconds West 1315.23 feet to a 2 inch pipe at the Southwest corner of government lot 2 of said section; thence continuing along said quarter line (West line of said government lot 2) North 00 degrees 2 minutes 12 seconds East 896.50 feet to a 1/2 inch re-rod, being the point of beginning of this description; thence continuing along the last described course, North 00 degrees 02 minutes 12 seconds East 300.00 feet to a 1/2 inch re-rod; thence South 66 degrees 21 minutes 37 seconds East 43.65 feet to a 1/2 inch re-rod on the East line of an easement for Ingress and egress described in Liber 266, page 115, Charlevoix County Records. Thence continuing South 66 degrees 21 minutes 37 seconds East 150.00 feet to a 1/2 inch re-rod, thence South 5 degrees 45 minutes 4 seconds East 223.60 feet to a 1/2 inch re-rod; thence North 89 degrees 57 min-

utes 48 seconds West 160.00 feet to a 1/2 inch rod on the East line of said easement; thence continuing North 89 degrees 57 minutes 48 seconds West 40.00 feet to the point of beginning; being a part of government lot 2, Section 30, Township 33 North, Range 6 West.

The redemption period shall be 6 months from the date of such sale, unless determined abandoned in accordance with MCL 600.3241a, in which case the redemption period shall be 30 days from the date of such sale.

Dated: Dec. 24, 2003

For more information, please call:  
FC G 248.593.1313  
Trott & Trott, P.C.  
Attorneys For Bank One, N.A.  
30400 Telegraph Rd  
Ste 200  
Bingham Farms, Michigan 48025-5822  
File #005185F01

**NOTICE OF MORTGAGE FORECLOSURE SALE**  
**THIS FIRM IS A DEBT COLLECTOR ATTEMPTING TO COLLECT A DEBT. ANY INFORMATION OBTAINED WILL BE USED FOR THAT PURPOSE.**

**PLEASE CONTACT OUR OFFICE AT THE NUMBER BELOW IF YOU ARE IN ACTIVE MILITARY DUTY.**

**ATTN PURCHASERS:** This sale may be rescinded by the foreclosing mortgagee. In that event, your damages, if any, shall be limited solely to the return of the bid amount tendered at sale, plus interest.

**MORTGAGE SALE -** Default has been made in the conditions of a mortgage made by Jane Russell Donaldson and Kristine M Russell and Kevin Russell ak/a Kevin D Russell, husband and wife, original mortgagor(s), to Chase Manhattan Mortgage Corporation, Mortgagee, dated March 21, 2000, and recorded on March 28, 2000 in Liber 385 on Page 102, in Charlevoix county records, Michigan, on which mortgage there is claimed to be due at the date hereof the sum of Eighty-Seven Thousand Two Hundred Thirty Four And 15/100 Dollars (\$87,234.15), including interest at 8.875% per annum.

Under the power of sale contained in said mortgage and the statute in such case made and provided, notice is hereby given that said mortgage will be foreclosed by a sale of the mortgaged premises, or some part of them, at public venue, at the Main lobby of the Charlevoix County Courthouse in Charlevoix at 11 a.m., on Jan. 30, 2004.

Said premises are situated in Township of South Arm, Charlevoix County, Michigan, and are described as: Commencing at a 3/4 inch pipe at the West 1/4 corner of Section 28, Township 32 North, Range 7 West, thence along the West line of said Section, also being the centerline of Ranney Road, North 0 degrees, 13 minutes, 26 seconds West 885.51 feet to the point of beginning of this description; thence continuing along said section line, and said centerline, North 0 degrees, 13 minutes, 26 seconds West 435.00 feet to the North 1/8 line of said Section, thence along said 1/8 line North 89 degrees, 38 minutes, 43 seconds East 33.00 feet to a 1/2 inch rod on the East line of said road; thence continuing along said 1/8 line North 89 degrees, 38 minutes, 43 seconds East 217.00 feet to a 1/2 inch rod; thence parallel with said 1/8 line South 89 degrees, 38 minutes, 43 seconds West 217.00 feet to a 1/2 inch rod on the East line of said road; thence continuing South 89 degrees, 38 minutes, 43 seconds West 33.00 feet to the point of beginning being part of the Southwest 1/4 of the Northwest 1/4 of Section 28, Township 32 North, Range 7 West.

The redemption period shall be 6 months from the date of such sale, unless determined abandoned in accordance with MCL 600.3241a, in which case the redemption period shall be 30 days from the date of such sale.

Dated: Dec. 31, 2003

For more information, please call:  
FC S 248.593.1304  
Trott & Trott, P.C.  
Attorneys For Chase Manhattan Mortgage Corporation  
30400 Telegraph Rd  
Ste 200  
Bingham Farms, Michigan 48025-5822  
File #007922F01

**THIS FIRM IS A DEBT COLLECTOR ATTEMPTING TO COLLECT A DEBT. ANY INFORMATION OBTAINED WILL BE USED FOR THAT PURPOSE. PLEASE CONTACT OUR OFFICE AT THE NUMBER BELOW IF YOU ARE IN ACTIVE MILITARY DUTY.**

**MORTGAGE SALE -** Default has been made in the conditions of a mortgage made by Lester E. Stark, a single man and Marcia L. McNitt, as joint tenants with full rights to survivorship, to Saxon Mortgage, Inc., mortgagee, dated Aug. 24, 1999 and recorded Sept. 9, 1999 in Liber 371, Page 607, Charlevoix County Records. Said mortgage is now held by JPMorgan Chase Bank f/k/a The Chase Manhattan Bank successor by merger to Chase Bank of Texas, National Association, f/k/a Texas Commerce Bank, N.A. as Custodian by assignment dated Aug. 24, 1999 and recorded on Sept. 9, 1999 in Liber 371, Page 619, Charlevoix County Records. There is claimed to be due on such mortgage the sum of Fifty-Six Thousand Three Hundred Sixty-Nine and 21/100 Dollars (\$56,369.21) including interest at the rate of 12.75% per annum.

Under the power of sale contained in the mortgage and the statutes of the State of Michigan, notice is hereby given that the mortgage will be foreclosed by a sale of the mortgaged premises, or some part of them, at public venue at the main lobby of Charlevoix County Courthouse in Charlevoix in Charlevoix County, Mich. at 11 a.m. on Jan. 23, 2004.

The premises are located in the Village of Boyne Falls, Charlevoix County, Mich., and are described as:  
Lots 7 and 8, Block 13, Addition No. 2 to the Village of Boyne Falls, according to the plat recorded in Liber 1 of Plats, Page 18, Charlevoix County Records.

The redemption period shall be 6 months from the date of such sale, unless determined abandoned in accordance with MCL 600.3241a, in which case the redemption period shall be 30 days from the date of such sale.

Dated: Dec. 31, 2003

For more information, please call:  
FC S 248.593.1304  
Trott & Trott, P.C.  
Attorneys For Chase Manhattan Mortgage Corporation  
30400 Telegraph Rd  
Ste 200  
Bingham Farms, Michigan 48025-5822  
File #007922F01

**THIS FIRM IS A DEBT COLLECTOR ATTEMPTING TO COLLECT A DEBT. ANY INFORMATION OBTAINED WILL BE USED FOR THAT PURPOSE. PLEASE CONTACT OUR OFFICE AT THE NUMBER BELOW IF YOU ARE IN ACTIVE MILITARY DUTY.**

**MORTGAGE SALE -** Default has been made in the conditions of a mortgage made by John S. Marsh, A Single Man, to Franklin Mortgage Funding, mortgagee, dated Feb. 21, 2002 and recorded Feb. 26, 2002 in Liber 460, Page 2, Charlevoix County Records. Said mortgage is now held by JPMorgan Chase Bank As Trustee by assignment dated Feb. 21, 2002 and recorded on December 20, 2002 in Liber 506, Page 567, Charlevoix County Records. There is claimed to be due on such mortgage the sum of

Two Hundred One Thousand Three Hundred Forty-Five and 18/100 Dollars (\$201,345.18) including interest at the rate of 10.99% per annum.

Under the power of sale contained in the mortgage and the statutes of the State of Michigan, notice is hereby given that the mortgage will be foreclosed by a sale of the mortgaged premises, or some part of them, at public venue at the main lobby of Charlevoix County Courthouse in Charlevoix County, Mich. at 11 a.m. on Jan. 16, 2004.

The premises are located in the Township of Eveline, Charlevoix County, Michigan, and are described as: Parcel "A":

In the Township of Hayes, Charlevoix County, Michigan, beginning at a 2 1/2 inch pipe at the North quarter corner of Section 1, Town 33 North, Range 7 West; thence South 1 degree 14 minutes 24 seconds East along the North and South quarter line of said section, as monumented, and along the centerline of Stephens Road, 335.00 feet; thence North 89 degrees 26 minutes 44 seconds West 1308.55 feet to the West eighth line of said section; thence North 0 degrees 30 minutes 34 seconds West along said eighth line, 334.89 feet to the North line of said section; thence South 89 degrees 26 minutes 44 seconds East along said section line, 1304.27 feet to the point of beginning; being a part of the Northeast Fractional Quarter of the Northwest Quarter of Section 1, Town 33 North, Range 7 West, and containing 10.042 acres, more or less, within the perimeter of the courses herein described. Subject to the rights of the public and of any governmental unit in any part thereof taken, used or deemed for street, road or highway purposes.

Parcel "B"

In the Township of Hayes, Charlevoix County, Michigan, commencing at a 2 1/2 inch pipe at the North quarter corner of Section 1, Town 33 North, Range 7 West; thence South 1 degree 14 minutes 24 seconds East along the North and South quarter line of said section, as monumented, 335.00 feet to a point in the centerline of Stephens Road, being the Point of Beginning of this description; thence continuing South 1 degree 14 minutes 24 seconds East along said quarter line, and along the centerline of said road, 334.00 feet; thence North 89 degrees 25 minutes 44 seconds West 1312.81 feet to the West eighth line of said section; thence North 0 degree 30 minutes 34 seconds West along said eighth line 333.89 feet; thence South 89 degrees 26 minutes 44 seconds East 1308.55 feet to the point of beginning; being a part of the Northeast fractional quarter of the Northwest fractional quarter of Section 1, Town 33 North, Range 7 West, and containing 10.045 acres, more or less, within the perimeter of the courses herein described. Subject to the rights of the public and of any governmental unit in any part thereof taken, used or deemed for street, road or highway purposes.

The redemption period shall be 6 months from the date of such sale, unless determined abandoned in accordance with MCL 600.3241a, in which case the redemption period shall be 30 days from the date of the sale. The foreclosing mortgagee can rescind the sale in the event a third party buys the property and there is a simultaneous resolution with the borrower.

Dated: Dec. 17, 2003

**ORLANS ASSOCIATES PC**  
Attorneys for JPMorgan Chase Bank As Trustee, As Assignee  
P.O. Box 5041  
Troy, MI 48007-5041  
(248) 457-1000  
File No. 207.1445

**Notice Of Mortgage Foreclosure Sale**  
**THIS FIRM IS A DEBT COLLECTOR ATTEMPTING TO COLLECT A DEBT. ANY INFORMATION WE OBTAIN WILL BE USED FOR THAT PURPOSE. PLEASE CONTACT OUR OFFICE AT THE NUMBER BELOW IF YOU ARE IN ACTIVE MILITARY DUTY.**

**ATTN PURCHASERS:** This sale may be rescinded by the foreclosing mortgagee. In that event, your damages, if any, shall be limited solely to the return of the bid amount tendered at sale, plus interest.

**MORTGAGE SALE -** Default has been made in the conditions of a mortgage made by Duncan Gerard MacEachern, also known as Duncan G. MacEachern, and Margaret Mary MacEachern, also known as Margaret M. MacEachern, his wife, original mortgagor(s), to Decision One Mortgage Company, LLC, Mortgagee, dated Dec. 31, 2001, and recorded on July 2, 2002 in Liber 476 on Page 16, and assigned by said Mortgagee to Bankers Trust Company, as Trustee as assignee by an assignment recorded on April 18, 2003 in Liber 533 on Page 5, in Charlevoix county records, Michigan, on which mortgage there is claimed to be due at the date hereof the sum of Two Hundred Fifty-Six Thousand Eight Hundred Sixteen And 18/100 Dollars (\$256,816.18), including interest at 7.22% per annum.

Under the power of sale contained in said mortgage and the statute in such case made and provided, notice is hereby given that said mortgage will be foreclosed by a sale of the mortgaged premises, or some part of them, at public venue, at the Main lobby of the Charlevoix County Courthouse in Charlevoix at 11 a.m., on Jan. 30, 2004.

Said premises are situated in City of Boyne City, Charlevoix County, Michigan, and are described as: Commencing at an iron stake at the Northwest corner of Lot 15 on the Easterly right of way of Zenith Heights Road of the Amended Plat of Hills of Walloon, according to the Plat thereof recorded in Liber 2 of Plats, Pages 255 and 256, Charlevoix County Records; thence South 88 degrees 21 minutes 18 seconds East along the Northernly line of said lot, 160.00 feet to an iron stake, being the Point of Beginning of this description; thence continuing South 88 degrees 21 minutes 18 seconds East 70.00 feet to a concrete monument at the PC of a curve in the Northernly line of said lot; thence on a curve to the left 89.37 feet to an iron stake; thence South 00 degrees 31 minutes 42 seconds West 159.63 feet to an iron stake in the Southerly line of said lot; thence North 88 degrees 21 minutes 18 seconds West along the Southerly line of said lot, 153.00 feet to an iron stake; thence North 00 degrees 31 minutes 42 seconds East 130.00 feet to the Point of Beginning; being a part of Lot 15 of said Amended Plat of Hills of Walloon.

The redemption period shall be 6 months from the date of such sale, unless determined abandoned in accordance with MCL 600.3241a, in which case the redemption period shall be 30 days from the date of such sale.

Dated: Dec. 31, 2003

For more information, please call:  
FC H 248.593.1300  
Trott & Trott, P.C.  
Attorneys For Deutsche Bank Trust Company Americas, f/k/a Bankers Trust Company, as Trustee  
30400 Telegraph Rd  
Ste 200  
Bingham Farms, MI 48025-5822  
File #007921F01

**THIS FIRM IS A DEBT COLLECTOR ATTEMPTING TO COLLECT A DEBT. ANY INFORMATION OBTAINED WILL BE USED FOR THAT PURPOSE. PLEASE CONTACT OUR OFFICE AT THE NUMBER BELOW IF YOU ARE IN ACTIVE MILITARY DUTY.**

**MORTGAGE SALE -** Default has been made in the conditions of a mortgage made by John S. Marsh, A Single Man, to Franklin Mortgage Funding, mortgagee, dated Feb. 21, 2002 and recorded Feb. 26, 2002 in Liber 460, Page 2, Charlevoix County Records. Said mortgage is now held by JPMorgan Chase Bank As Trustee by assignment dated Feb. 21, 2002 and recorded on December 20, 2002 in Liber 506, Page 567, Charlevoix County Records. There is claimed to be due on such mortgage the sum of

Two Hundred One Thousand Three Hundred Forty-Five and 18/100 Dollars (\$201,345.18) including interest at the rate of 10.99% per annum.

Under the power of sale contained in the mortgage and the statutes of the State of Michigan, notice is hereby given that the mortgage will be foreclosed by a sale of the mortgaged premises, or some part of them, at public venue at the main lobby of Charlevoix County Courthouse in Charlevoix in Charlevoix County, Mich. at 11 a.m. on Jan. 23, 2004.

The premises are located in the Village of Boyne Falls, Charlevoix County, Mich., and are described as:  
Lots 7 and 8, Block 13, Addition No. 2 to the Village of Boyne Falls, according to the plat recorded in Liber 1 of Plats, Page 18, Charlevoix County Records.

The redemption period shall be 6 months from the date of such sale, unless determined abandoned in accordance with MCL 600.3241a, in which case the redemption period shall be 30 days from the date of such sale.

Dated: Dec. 31, 2003

For more information, please call:  
FC S 248.593.1304  
Trott & Trott, P.C.  
Attorneys For Chase Manhattan Mortgage Corporation  
30400 Telegraph Rd  
Ste 200  
Bingham Farms, Michigan 48025-5822  
File #007922F01

**THIS FIRM IS A DEBT COLLECTOR ATTEMPTING TO COLLECT A DEBT. ANY INFORMATION OBTAINED WILL BE USED FOR THAT PURPOSE. PLEASE CONTACT OUR OFFICE AT THE NUMBER BELOW IF YOU ARE IN ACTIVE MILITARY DUTY.**

**MORTGAGE SALE -** Default has been made in the conditions of a mortgage made by John S. Marsh, A Single Man, to Franklin Mortgage Funding, mortgagee, dated Feb. 21, 2002 and recorded Feb. 26, 2002 in Liber 460, Page 2, Charlevoix County Records. Said mortgage is now held by JPMorgan Chase Bank As Trustee by assignment dated Feb. 21, 2002 and recorded on December 20, 2002 in Liber 506, Page 567, Charlevoix County Records. There is claimed to be due on such mortgage the sum of

Two Hundred One Thousand Three Hundred Forty-Five and 18/100 Dollars (\$201,345.18) including interest at the rate of 10.99% per annum.

Under the power of sale contained in the mortgage and the statutes of the State of Michigan, notice is hereby given that the mortgage will be foreclosed by a sale of the mortgaged premises, or some part of them, at public venue at the main lobby of Charlevoix County Courthouse in Charlevoix County, Mich. at 11 a.m. on Jan. 23, 2004.

The premises are located in the Village of Boyne Falls, Charlevoix County, Mich., and are described as:  
Lots 7 and 8, Block 13, Addition No. 2 to the Village of Boyne Falls, according to the plat recorded in Liber 1 of Plats, Page 18, Charlevoix County Records.

The redemption period shall be 6 months from the date of such sale, unless determined abandoned in accordance with MCL 600.3241a, in which case the redemption period shall be 30 days from the date of such sale.

Dated: Dec. 31, 2003

For more information, please call:  
FC S 248.593.1304  
Trott & Trott, P.C.  
Attorneys For Deutsche Bank Trust Company Americas, f/k/a Bankers Trust Company, as Trustee  
30400 Telegraph Rd  
Ste 200  
Bingham Farms, MI 48025-5822  
File #007921F01

The Citizen-Journal

# CLASSIFIEDS

YOUR LOCAL MARKETPLACE

• \$4 for the first 15 words or less  
• 25¢ for each additional word

Deadline: Noon Monday

We accept Visa or MasterCard

To place your ad, call (231)582-6761

Deadline for advertising in the classifieds is noon Monday. All classified ads must be paid for in advance, except for businesses that have established accounts.

Advertisers should check their ad the first week it appears. The Citizen-Journal is not responsible for failure to print an ad or for a typographic error, except to the extent of the first insertion. Adjustment for an error is limited to the cost of the part of the ad where the error occurred. The publisher reserves the right to accept, reject and/or edit any and all advertising submitted for publication.

Advertising rates are 15 words for \$4 per insertion, and 25 cents per word over the minimum. If you run an ad for two weeks, the third week is free. Ads billed are \$1 more per insertion. Blind ads are the cost of the ad plus \$5 for the first week and \$1 for each consecutive week.



**Services**

**PAUL'S HAUL BRUSH, JUNK, appliances, garage, property and construction clean-ups**  
231-264-5034/cell 715-0053.

**Help Wanted**

**GRANDVUE MEDICAL Care Facility:** As we continue to expand our nursing department to implement our new neighborhood culture, we have full and part time positions available for RNs and LPNs who are interested in working in a state-of-the-art facility that emphasizes a holistic approach to care through reduced resident caseloads. Our extensive benefit package includes generous shift differentials for afternoon and midnight positions, liberal time off policy, and company paid retirement plan. Health, dental, vision and life insurance are available for full time staff. Self scheduling allows nurses flexibility to plan shifts around individual needs; and nurses work alternate weekends. If you are looking for a position that will challenge your skills, encourage personal growth and allow you to build relationships with residents & their families, please apply at 1725 South Peninsula Road, East Jordan; or call Jane Korthase at 231-536-2286 with questions.

**Help Wanted**

**ATTENTION!**  
Home Based Business!  
Control your OWN hours and Income! Full training.  
Free CD-ROM and Booklets.  
www.goldmine4all.com  
1-888-232-9833

**Services**

**PALACE PAINTERS, INC.**

Quality + FAIR = Value  
to the Work + Pricing = Economy  
Precision Painting, Staining, Light Drywall. All Jobs Considered.  
Very Versatile!  
Respectable References  
231-409-9595

**Help Wanted**

**TRUCK AND VAN drivers** don't have to stay away from home to get loads. Also looking for owner operators. If interested, call 616-361-5315.

**Logging/Lumber**

**WHEN YOU HAVE** something to sell, join the many satisfied users of the classifieds. They have found it to be the quick, easy and low cost way to find a cash buyer.

**Rentals**

**BELLAIRE, 3 BED-ROOM Home,** great in town location, walk anywhere \$600/monthly, Call 231-533-9025.

**Land/Property**

**11 ACRE HARDWOOD building site,** approved. County maintained road between Boyne Mountain and I-75. Prices starting at \$29,900, owner financing. Call Jeff Wellman at RE/MAX of Boyne, 231-582-0097.

**Free Items**

**FREE ROTTWEILER MIX, 10 months old,** good with children, potty trained, needs lots of love and an owner that can train him; Call 231-587-9064, leave message if not home.

**Real Estate**

**BECOME A Homeowner:** FREE Home buyer classes now forming. We can help you clean up bad credit, learn financial management skills and prepare a budget you can live with. Call Alice at Northern Homes CDC to reserve your space. Classes starting in January at a location near you. Call NOW! Toll Free, 866-637-1834.

**1.5 ACRES ZONED commercial** on highway US 131 just before the entrance to prestigious Boyne Mountain ski and golf resort, \$35,000. Call Jeff Wellman at RE/MAX of Boyne, 231-582-0097.

**597 OF US 131 highway frontage** just south of the entrance to prestigious Boyne Mountain ski, golf and water park resort. Approximately 4.5 acres zoned for commercial storage, \$195,000. Call Jeff Wellman at RE/MAX of Boyne, 231-582-0097.

**Miscellaneous**

**UPRIGHT PIANO for sale:** 1913 Bush and Lane upright piano, \$350 or best offer. For further details, call 231-582-7539.

**Wanted**

**WANTED: STANDING timber & saw logs.** Selective cutting and long term forest improvement available. Call Burt Moeke, Fahl Forest Products, 231-631-9600.

**Logging/Lumber**

**WANTED: STANDING hardwood timber and logs.** Free estimates, insured, since 1951. Moeke Brothers Lumber, Inc., Mancelona, 231-587-8321, evenings 231-587-9436 or 231-587-5779.

**PUBLISHER'S NOTICE:**

All real estate advertising in this newspaper is subject to the Fair Housing Act which makes it illegal to advertise "any preference, limitation or discrimination based on race, color, religion, sex, handicap, familial status or national origin, or an intention, to make any such preference, limitation or discrimination." Familial status includes children under the age of 18 living with parents or legal custodians, pregnant women and people securing custody or children under 18.

This newspaper will not knowingly accept any advertising for real estate which is in violation of the law. Our readers are hereby informed that all dwellings advertised in this newspaper are available on an equal opportunity basis. To complain of discrimination call HUD toll-free at 1-800-669-9777. The toll-free number for the hearing impaired is 1-800-927-9275.



THE BEST PLACE TO FIND IT, SELL IT, BUY IT, AND ANNOUNCE IT.

Buy two weeks, get the third week FREE

Minimum Charge: \$4 for 15 words, for each additional word add 25¢

15 words	\$4.00	30 words	\$8.00	45 words	\$12.00	60 words	\$16.00
75 words	\$20.00	90 words	\$24.00	105 words	\$28.00	120 words	\$32.00
135 words	\$36.00	150 words	\$40.00	165 words	\$44.00	180 words	\$48.00

Deadline for The Citizen-Journal is Monday at 10 a.m.

PLEASE ENCLOSE PAYMENT AND MAIL TO:  
The Citizen-Journal • P.O. Box A • Boyne City, MI 49712

The Citizen-Journal

112 South Park St.  
Boyne City, MI 49712  
(231) 582-6761

Do you have a car for sale?



How about a boat?

Or maybe some furniture?

Call to place a classified ad with one of our helpful representatives & sell your no-longer-wanted items FAST!

**Dynamic Duo**

**FREE Market Analysis CALL**  
231-582-2948  
Ext. 218 or 214

Professionalism with a personal touch

FREE Video! Century 21 Up North

Lake Charlevoix frontage for boat dock and swimming! This newer home offers a private setting yet walking distance to downtown Boyne City. A great alternative to a condominium at \$459,500.

Century 21 Up North (231) 582-2948 Ext. 218 or 214  
e-mail: dynamic2@freeway.net  
231 E. WATER ST., BOYNE CITY

Century 21 Up North

It's not just finding a house. It's a fulfilling dream.

Raised ranch style home consisting of 3 bedrooms, 2 baths, two levels with a kitchen on each level. Walkout lower area with attractive private backyard. Great Lake Charlevoix Views with lake access. Priced to sell at \$129,000.

3 bedroom, 1 bath home. Nice sized living room with hard wood floors. Large upper bedroom for privacy. Full basement. Large trees in spacious yard. Convenient to most everything in area. Possession Negotiable. Great Value at \$99,900.

If you're thinking of selling call today for a free market analysis!

Gary W. Roberts 536-7859  
Cary Adgate 549-2218  
Mark Kowalske 582-6981

Doug Hoessl 582-1030  
Jody Kowalske 582-6981

Sue Grobaski 549-2995  
Ronald G. Tier 582-6554  
Valinda Turner 582-6738

CENTURY 21 - Up North  
231 E. Water • PO Box 169  
Boyne City, MI 49712  
(231) 582-6554 • (800) 431-2121 (in MI)  
Website: www.century21upnorth.com  
Doug Hoessl - Broker/Owner

**PUBLIC NOTICES**

**PETER M. SCHNEIDERMAN & ASSOCIATES, P.C. IS ATTEMPTING TO COLLECT A DEBT AND ANY INFORMATION OBTAINED WILL BE USED FOR THAT PURPOSE. PLEASE CONTACT OUR OFFICE AT (248) 539-7400 IF YOU ARE IN ACTIVE MILITARY DUTY.**

**MORTGAGE SALE -** Default has been made in the conditions of a mortgage made by: Linda M. Davison, a single woman, to Novastar Mortgage, Inc., mortgagee, dated Feb. 16, 2001 and recorded Feb. 26, 2001, in Liber 409, Page 356, Charlevoix County Records, Michigan, on which mortgage there is claimed to be due at the date hereof the sum of one hundred eighty three thousand one hundred thirty four and 45/100 Dollars (\$183,134.45) including interest at 10.75% per annum.

Under the power of sale contained in said mortgage

and the statute in such case made and provided, notice is hereby given that said mortgage will be foreclosed, by a sale of the mortgaged premises, or some part of them, at public venue, at the main lobby of Charlevoix County Courthouse in Charlevoix in Charlevoix, Michigan at 11 a.m. on Jan. 23, 2004.

Said premises are situated in TOWNSHIP OF SOUTH ARM, CHARLEVOIX County, Michigan and are described as:

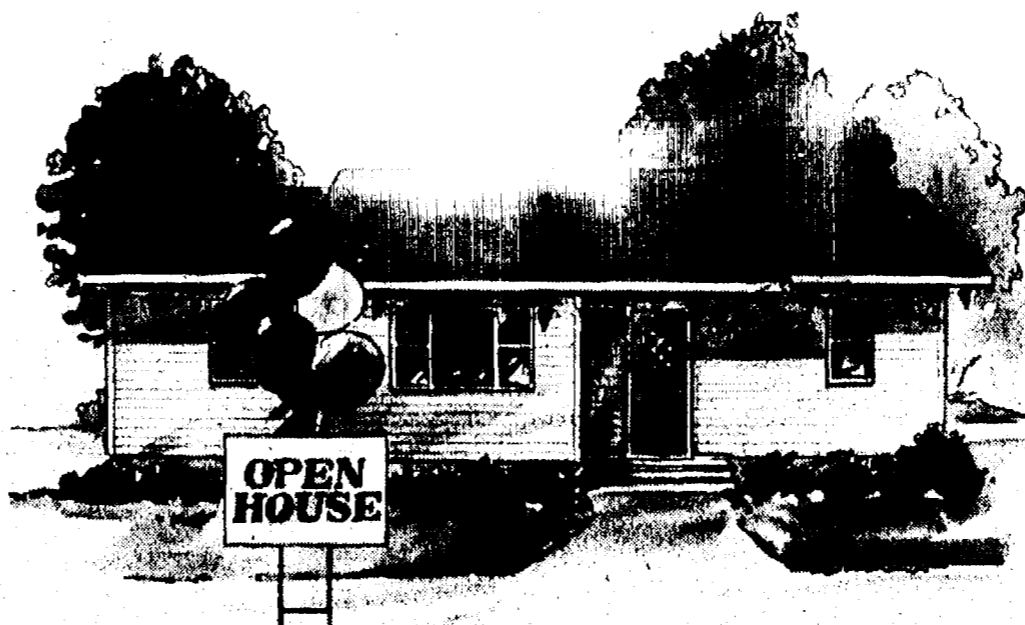
Lots 1 & 2 and the Northwesterly 25 feet of Lot 3 (the Southeasterly line of which is parallel with the Southeasterly line of Lot 2), according to the recorded Plat of HEALEY as recorded in Liber 2 of Plats, page 26, Charlevoix County Records. EXCEPTING THEREFROM a part of said Lot 3, described as follows: Commencing at the Northwesterly corner of said Lot 3; thence along the Westerly line of said Lot 3,

South 28°13'00" East 5.02 feet, being the POINT OF BEGINNING; thence continuing along said Westerly line of Lot 3, South 28°13'00" East 20.00 feet; thence along the Southeasterly line of the Northwesterly 25 feet of said Lot 3, North 64°00'09" East 50.00 feet; thence North 25°59'51" West 10.00 feet; thence South 75°07'41" West 51.75 feet to the Point of Beginning. Parcel tax ID# 15-014-280-001-10

The redemption period shall be 6 months from the date of such sale, unless determined abandoned in accordance with 1948CL 600.3241a, in which case the redemption period shall be 30 days from the date of the sale.

Dated: Dec. 16, 2003  
Novastar Mortgage, Inc. Mortgagee  
Peter M. Schneiderman & Associates, P.C.  
30300 Northwestern Highway, Suite 222  
Farmington Hills, MI 48334

# REAL ESTATE CLASSIFIEDS



The Citizen-Journal

(231)582-6761

P.O. Box A, Boyne City, MI 49712

Buy 2 weeks, get the 3rd FREE!

Subscribe to your hometown paper today.

Call 582-6761

# SPORTS

## Ramblers lose a pair at holiday tourney

By PHIL TROMBLEY  
Sports writer

Pool free throw shooting and an inability to hold on to late-game leads cost the Boyne City basketball team when the Ramblers dropped both games at the Cheboygan Holiday Basketball Tournament held on Monday and Tuesday,

Dec. 29-30. The Ramblers held leads in both games of the tourney, but Rogers City came from behind to defeat Boyne City 56-50 in the opening round game and St. Ignace prevailed 57-54 to take the consolation game.

The Ramblers will look to improve their 1-4 over-

all record when they resume conference play this Friday at home against East Jordan.

"We've had the lead in the fourth quarter in every game this year," said Rambler head coach Tim Smith, "but we're shooting ourselves in the foot with our free throw shooting."

The Ramblers made

nine of 22 foul shots against Rogers City and sank just seven of 24 against St. Ignace for a sub-par 29 percent performance in the tournament.

"We know what we have to do to win and we've got to find a way to make the free throws," Smith said.

Against Rogers City the Ramblers held a 14-11 lead after one quarter, trailed 26-23 at the half, before Rogers City outscored Boyne City 30-27 after the break to gain the six-point win.

Grant Ameel led Boyne City with 14 points, Tylor Daniels added seven points

and eight rebounds, while Brenton Rozycki hauled in eight boards.

Boyne City led the consolation game 27-15 at half time and held a 37-28 margin after three before St. Ignace put on a 29-17 fourth quarter run to win it by five in the end. Grant Ameel led the Ramblers with 13 points, Daniels chipped in with nine points and Nick Follett scored six points with a solid overall game.

The pair of losses left Boyne City with a 1-4 record going into this Friday's home game against East Jordan.

## Lady Ramblers fourth at Kingsley Invitational

By PHIL TROMBLEY  
Sports writer

The Boyne City volleyball team picked up a pair of wins in pool play against one loss to gain a fourth-place finish at the eight-team Kingsley Invitational held last Saturday.

Kingsley took first place followed by Buckley, Benzie Central and Boyne City.

The Lady Ramblers beat Frankfort, lost to Buckley and then beat Traverse City St. Francis to move on to the bracket round.

Kingsley defeated Boyne City in the semi-final game and then Benzie Central prevailed in the consolation game.

"We didn't play as good as I hoped, but we finished where I hoped we would," said Boyne City head coach Dorine Britton.

"We advanced out of pool play and that was one of our goals."

Suzie Wellert was named to the all-tournament team for Boyne City.

Boyne City will travel to East Jordan tomorrow night for a Lake Michigan Conference match up.

## DNR announces early 2003 deer harvest estimates

The Department of Natural Resources has announced preliminary estimates of the 2003 Michigan firearm deer season harvest, indicating approximately 277,000 deer were taken, of which 57 percent were antlered and 43 percent were antlerless.

Final deer harvest figures will be available in July, and are based on a mail survey of approximately 50,000 of this year's deer hunters.

The 2003 preliminary estimate is slightly below the 2002 estimated harvest of 299,000, calculated from the 2002 mail survey.

The state's record firearm season harvest occurred in 1998, when an estimated 351,000 deer were taken.

The DNR has modified the regulations for obtaining an antlerless license and established special "antlerless only" seasons since 1996, to encourage hunters to take antlerless deer, in an effort to reduce the statewide deer

herd. The record harvests in 1998, 1999, and 2000 reflect the success of this strategy, and the deer reductions has resulted in fewer antlerless licenses available in some areas this year contributing to the reduced harvest.

Hunter success during the firearm deer season generally comprises nearly 60 percent of the total annual deer harvest. Archery seasons contribute about 25 percent, muzzleloading about 5 percent, and special antlerless seasons about 10 percent.

The total deer harvest from all seasons this year is expected to rank among Michigan's top 10 deer seasons.

An estimated 700,000 hunters took to the field during the Nov. 15-30 hunt. Total license sales through the firearm season were comparable to last year's sales (1,721,507 compared to 1,724,565). The weather

conditions early in the firearm season were wet (rain, mist, fog) throughout most of the state, with mild temperatures (50-60 degrees Fahrenheit) creating marginal hunting conditions throughout most of Michigan for the opener through Nov. 19.

Historically, hunting success is highest in the first three days, and weather may have affected this year's harvest. There was a decrease in the Lower Peninsula deer harvest from 2002.

The preliminary harvest estimate is 231,000 animals compared to last year's estimated final harvest of 255,000. Upper Peninsula hunters took an estimated 46,000 deer this fall, slightly higher than last year's final harvest estimate of 44,000 deer. The Mackinac Bridge count of vehicles with deer throughout the firearm deer season, was up seven percent from last year.

## BOYNE AREA HOCKEY RESULTS

Based out of the new Polar Bear Ice Arena in Harbor Springs this year, the Boyne Area Squirr team includes players from Boyne City, East Jordan, Petoskey, and Central Lake.

So far the team has played 10 games and has a

record of 8 -1-1 against teams from Gaylord, Kalkaska, Newberry and St. Ignace.

Leading goal scorers include Kolbi Shumaker with 21 goals, Zach Goodwin with 13 goals, Miles Wilkes with 11 goals, Weston

Kartes with five goals, Keegan Reynolds with three goals and Aaron Clark with two goals. Mitchell Carlson, Eddie Brook, Brock Sanderson, Mitchell Reynolds and Trey Reinhardt have also been able to "find the twine"

with one goal each. Assists have come from Shane Severn, Kaley Aown and Amanda Grubbs. T.J. Funck and Nick Kolodziej have also played well both offensively and defensively. Keegan Reynolds has

been strong in goal with three shutouts. Kaley Aown has also contributed as goalie.

Next the team will travel to Mackinaw City and Alpena where they will play for the first time this season.

## Boyne Area Squirrs

record of 8 -1-1 against teams from Gaylord, Kalkaska, Newberry and St. Ignace.

Leading goal scorers include Kolbi Shumaker with 21 goals, Zach Goodwin with 13 goals, Miles Wilkes with 11 goals, Weston

## Boyne Area Midgets

Soo's B team 8-0. Looze tallied a hat trick with three goals, Eli Barsy scored two, Dylan Clark, Stephen Cahoon, and Scarbrough each added one goal.

Gabe Korthase, William Brown, and Clark gave assists: Josh Aown and Looze two each, while Ryan Fields and Scarbrough earned playmakers with

three assists. Bobby Courtright was in goal both games.

The third game was with St. Ignace, and went scoreless until late in the third period when Boyne's Russell Williams hit the net with a pass from Evan Keller and Eli Barsy.

Netminder Bobby Courtright earned the shut-out turning away all 29

shots on goal.

In the final game with Newberry, the score saw-sawed until Newberry scored with under two minutes left to win 5-6. Williams, Barsy, and Scarbrough scored, and Looze put in two.

Justin Conklin and Scarbrough gave two assists; Clark, Barsy and Looze one each. Courtright

was again between the pipes.

On Jan 4 the team hosted Mackinaw City. Russell Williams scored twice, Cody Webster and Darren Looze added one each in the 4-1 win.

Stephen Cahoon, Josh Aown, Eli Barsy, and Ryan Fields gave the assists. Bobby Courtright was in net.

## SPORTS SCHEDULE

### BOYNE CITY

Jan. 8: JV/Varsity volleyball, at East Jordan, 6 p.m.  
Jan. 9: JV/Varsity basketball, East Jordan, home, 6 p.m.; Freshman basketball, East Jordan, home, 4:15 p.m.  
Jan. 10: JV/Varsity volleyball, Jo-Burg JV tournament, a.m.

### BOYNE FALLS

Jan. 9: JV/Varsity basketball, at Wolverine, 6 p.m.

### EAST JORDAN

Jan. 8: JV/Varsity volleyball, Boyne City, home, 6 p.m.; Freshman volleyball, Boyne City, home, 4:30 p.m.  
Jan. 9: JV/Varsity basketball, at Boyne City, 6 p.m.; Freshman basketball, at Boyne City, 4:15 p.m.  
Jan. 10: JV/Varsity volleyball, Bulldog invitational Varsity only, 9 a.m.  
Jan. 13: JV/Varsity basketball, at St. Francis, 6 p.m.; Freshman basketball, at St. Francis, 4:15 p.m.

## Super Crossword Answers

GABOR STAND ELIAM TEO  
ALLURE PASTA MENU HMO  
BATHMASTER CHAMPION  
ED TIED SEERS JINTO  
ZOWIE ELMORE TINKER  
ARIDOR LEONI TACT  
ROUE MEICATE CLOSEOUT  
IRK EVIARS EDIT NOO  
OYES RIND AGENDA AFRO  
OTOOLE INON DROSS  
AFAR SANDWEDGE BEER  
ADELE ALAS RAVING  
GOAL RATHER NOSE AIDE  
ERR AONE ROWER VEST  
BLOOMING LATELY JET  
RUNIT OPABE DIANKIE  
BAODAD FLEXIO OMEN  
ACRE TRADE MART APE  
STARTER BENNYWOODMAN  
SUN BENE LEMO TUNERS  
OAT BEER FLIMA ERASE

Gaylord or Petoskey Area Cards. Over \$5,200 In Savings!  
**GET 141 FREE MEALS**  
21 Golf Rounds, Skiing, Tours, Cruises, Lodging and More!  
2 for 1 Dining & Fun: 231-935-0255 [TwoOnTheTown.Com](http://TwoOnTheTown.Com)

**A New Senior Center for Boyne**  
We need your help - Give to the New Senior Center at the Litzenger Campus  
**582-6682** Remember Seniors with Memorials  
Send tax deductible checks to:  
**Huntington Bank**  
Citizens for Boyne City Senior Center  
-OR-  
400 Silver St • Boyne City, MI 49712

We print **EVERYTHING** you need!  
**Torch Printing**  
Choose from 5 convenient locations to serve you:  
**Eik Rapids** 204 River St. 231-264-9711  
**Bellaire** 206 N. Bridge St. 231-533-8523  
**Kalkaska** 318 N. Cedar St. 231-258-4600  
**Mancelona** 112 E. State St. 231-587-8471  
**Boyne City** 112 S. Park St. 231-582-6761

# MEDICAL DIRECTORY

**WALTER WEBBER, D.O.**  
FAMILY PHYSICIAN  
WEIGHT REDUCTION/MAINTENANCE  
2489 RAILROAD ST.  
BOYNE FALLS, MI 49713  
231-549-3153

OFFICE HOURS BY APPOINTMENT  
**LAKESIDE CHIROPRACTIC**  
DR. DANIEL J. THOMAS  
101 BRIDGE ST., P.O. BOX 602  
EAST JORDAN, MI 49727  
TELEPHONE: (231) 536-2616

**The Healing Circle**  
Theresa Prymuszewski, MA, MTS  
Licensed Professional Counselor  
Spiritual Director  
Certified Poetry Therapist  
REIKI Master  
102 Mill Street Suite 8  
East Jordan, MI (231) 499-4476  
[www.thehealingcircle-tp.com](http://www.thehealingcircle-tp.com)

**MEDICAP PHARMACY**  
We'll always make time for you.  
Prescription Delivery • Naturals & Alternatives  
Custom Made Medications • Compounding Pharmacy  
Most Insurance Plans Accepted  
**582-4545**  
104 S. Lake St. • Boyne City • Next To Fifth Third Bank  
Hours: M-F 9-6 • Sat 9-1:30  
Ample parking behind store front

**HUFFORD VISION & EYE CARE**  
225 State Street  
Boyne City, MI 49712  
(231) 582-9933  
Clear Vision Begins With Healthy Eyes  
Professional Service • Quality Products  
Complete Eye Care  
**Prescription Eyeglasses**  
Starting at **\$99.00**  
Not available with other discounts or coupons

**BELLAIRE FAMILY AND COSMETIC DENTISTRY**  
**Brian Rathke, D.D.S.**  
**H.A. VanLooy, D.D.S.**  
**Todd Rathke, D.D.S.**  
We are committed to providing quality, comprehensive care to our community and emphasize the early prevention of disease.  
Members: ADA, MDA, RDDS, AGD  
New Patients Welcome!  
4631 S. M-88 Hwy., Bellaire  
(231) 533-8712

**Dr. Steven A. Vod**  
Optometrist  
New Patients Welcome!  
601 Bridge St.  
East Jordan, MI 49727  
536-2240  
103 Clinton  
Charlevoix, MI 49720  
547-2901  
**24 Hour Emergency Care**  
1-877-997-3871

**Hearing Aids**  
with **Free Batteries For Life**  
Ask Us How!  
**Dr. Michael W. Koskus**  
Professional Hearing Aid & Audiology Service  
820 Arlington, next to Lockwood McDonald Hospital in Petoskey, MI  
231-348-3666 • 800-968-8080