

Was our winter that tough?

It sure must have been a tough winter, at least for this street sign on the corner of Line and Groveland. Plows, or construction workers in the fall must have bent over the sign making it hard to read from the road. Also bent was a stop sign. City workers will be replacing these signs as the spring wears on.



Charlevoix County Press

Volume 112, Number 5

April 3, 1991

35 Cents

Boyne City approves refined launch ramp rules

Boyne City Commissioners took another step toward refining the rules concerning the public boat launching ramp on North Lake Street Tuesday when they approved the first reading of an ordinance regulating the use of the ramp for citizens of the community and visitors from outside of the community.

The changes in the previous ordinance followed months of work between the Parks and Recreation Board, the launch ramp attendants, the city manager and the city attorney.

Perhaps the biggest change in

the rules is that people violating the rules shall be responsible for a civil infraction, and finding who is the responsible party would become liable for a fine up to \$250 plus the costs of prosecution and attorney fees.

Previously, the rules were written that included a misdemeanor paragraph. That has been found not to be effective according to city officials, as the only people who could write a misdemeanor ticket were the police officers and they had to see the infraction and the person operating the vehicle at the time of the infraction.

The new rules changing the matter to a civil offense means that the police can write a parking ticket for a car or trailer left in the ramp area with no one around, and the owner of the trailer or car would be liable to pay for the ticket.

Another part of the changes allows the city to move any boat, trailer or vehicle if it is parked in the ramp area for more than 48 hours. The equipment would be impounded by the city at an additional cost to the owner.

Many other changes were made in the wording of the ordinance,

most of them minor such as changing wording of the Boatmaster or Harbormaster to the Harbormaster or his designated assistant.

The rate structure for this upcoming season was not changed but changes were made to allow the city to raise or lower rates on an annual basis.

Presently the rates for launching a boat for those living outside of the city limits are set at \$3.00 per 24 hour period for a parking space. Seasonal parking spaces are set at \$200.

Those living inside the city limits will be able to use the launch

facility for free providing they go to the City Hall and get a sticker that has to be displayed on the right-hand side of the windshield of their vehicle.

Still included in the rules is that there is no winter storage or no camping allowed. The maximum overnight parking is an approved space is 14 days.

The original ordinance was approved in 1989 with the fee structure to start for the 1990 boating season. This refinement will be enacted for this coming season, 1991.

The boating season is listed as starting April 1, and continuing

through October 31 of the year.

The amendment to the present ordinance will become effective 15 days after the second reading which is scheduled for May 7th, 1991.

In other action at the noon meeting, the commissioners continued reviewing the proposed city budget with emphasis on street department, the library, debt summary, water and wastewater and the motor pool funds.

The city will be adopting the new fiscal year budget at the Tuesday evening meeting next week. It will go into effect May 1, 1991.

BC schools asking approval for building program

Boyne City School District voters will be asked next Tuesday to approve or disapprove an \$8.9 million bond proposal which would allow the school district to add classrooms and renovate space at all three schools the district uses.

The issue is actually \$8,890,000 which would be paid off by voters for the next 21 years at a rate of about 1.5 mills on top of the

present debt retirement millage. The current debt retirement millage will be continued at the present level and be used to pay off the bonds. This would make the debt retirement millage asked of the property owners within the school district 3.60 mills over the next 21 years.

The bond proposal, if passed, will allow the district to add a kin-

dergarten classroom and hall, add general storage and a receiving area, increase the parking lot size to hold 50 more cars, fix and upgrade the heating and ventilation system in the cafeteria and interior of the elementary school.

It will also allow for the conversion of the present middle school to become an upper elementary school to house the fourth and fifth grades. Part of the money would be used to repair a settlement problem of the building and to upgrade toilet facilities and make them barrier free.

The majority of the money would be used to construct a new middle school which would be placed and connected to the present high school. The plans show new classrooms for the sixth, seventh and eighth grades new science rooms for the sixth, seventh and eighth grades, a greenhouse to be shared by the seventh and eighth grade science classes, a life skills (home economics) classroom, three special education classrooms, curricula/instructional planning area, a special education parent conference and observation room, two computer labs, library/media center, gymnasium with locker rooms, and a cafeteria with a student serving area and chair storage area, two specialist rooms to be used by the Intermediate School District staff, an instructional staff workroom, and administration offices.

Some of the facilities will be shared with the high school and will include band and vocal room with practice and storage areas, an art room with storage, kitchen with appropriate storage and support facilities to become the central kitchen for all schools, receiving and maintenance areas, and a staff lunch room.

At the high school changes will include a new science room with a greenhouse and storage space, a new technology lab, distance learning lab large group instructional



Off they go, scurrying around the park looking for the hundreds of Easter eggs that were hidden in the grass, around the trees and shrubs and other places during the opening moments of the annual Lions Club Easter Egg Hunt that was held last Sunday. While the picture above shows some of the older children, kids between the ages of 3 to 10 participated. The winners, each holding onto their winnings, a chocolate bunny, included for the three and four year-olds, Michael Meads,

first, Kim Foster, second, and Michelle Fritsch, third. In the five to six year-old category the winners included Brian Sirmons, first, Vance Sirmon, second and Correy Handy, third. Seven and eight year-old winners included Jason Bostar, first, Wendy Chrysler, second, and Ashley Haddix, third. In the nine to ten year-old bracket, Natalie Stafford took the first place, Katie David was second and Dustin David was third.

Photos by Jim Gallop



Briefs News

Under the "It's Never Too Early" category, golfers are urged to sign up early for the second annual D.A.R.E. Golf Tournament which will be held May 24th on the Alpine Course at Boyne Mountain. The event, a four person scramble, will be featuring top personalities from around the state and will include sports celebrities and others. Information on the event can be obtained from Boyne Mountain or from Deborah Storm, Char-Em D.A.R.E. Association, 1000 Grant, Charlevoix, Michigan. All of the proceeds from the event go to the D.A.R.E. program within Charlevoix County.

If you are looking for a bicycle this year, hold on to your money and wait for the upcoming Boyne City Police Auction, where the department will be putting several years worth of accumulation of bicycles up for sale at prices children can afford. Other items gathered through the years will also be offered. The auction is slated for sometime in May.

Sunday morning, April 14th, at 3 a.m. Consumers Power is planning a two hour power outage in the City of Charlevoix. The outage will include all customers on the City of Charlevoix Power System. The outage is necessary for Consumers to do some repairs on the Charlevoix sub-station. The city is asking that residents try not to use too much water during the outage as the pumps will not be able to replace it until power is restored.

Opinions

The choice is yours

Next Tuesday may be one of the more important days for those living in the Boyne City School District. It is the day they will go to the polls to determine if the system will continue to expand in order to take care of the potential growth of the area as well as the current growth that is causing crowding problems at the elementary and middle school levels of education.

It is important that the voters know about the potential and perceived problems of the schools before they vote, and the talk around the community has provided much of the information voters will use in making their decision.

We all know that the school system is under some strain, finding room for a continuing larger number of students registering in Boyne City Public Schools.

On the one hand, we have a certain contingent that is saying no more taxes although the passage of the bond issue will only require about 1.5 mills more in taxes. We also have those who are saying that the plans the school has are too elaborate, would cost too much to construct and would not help the education of the students.

Some are saying that the school system should just teach the basics, eliminate the sports, the drama, the talented and gifted programs, and in general, teach the students how to read, spell, and make change.

Our problem is not with the basic or the extra-curricular activities that the community district enjoys frequently, but rather with what the community expects out of educating the children.

The way the community reacts to the upcoming election is more a means of discovering what the community thinks about the education the children are receiving.

It has been said that bricks and mortar do not make an education, they merely make an environment more conducive to learning.

We have said in the past that what the district needs is more classrooms, not necessarily new buildings. What that means is eliminating some of the room space being used for non-educational purposes, adding only when the need is greatest in the area of greatest need.

Right now, the greatest need is in the area of the lower grades, but those children will soon be moving up the educational ladder and will be filling the upper levels.

Whatever the voters think will be the deciding factor of the community as a whole.

If it passes, the schools will provide the quality education some feel the system should.

If it fails, then the schools will be able to provide just an education.

It is up to the voters, so be sure to get over to the middle school and cast your vote next Tuesday.

Letters

Wants apology from "Pride"

Editor:

This is an open letter to the group calling themselves "Boyne Pride."

You are an insult to every taxpayer in this community, this school district and the northland. Your insinuations that anyone not sharing your views on what ails our school system is somehow lacking in civic spirit and school pride has got to be the most asinine and stupid display of ignorance ever to surface regarding the needs of our schools. Shame on you. You owe us an apology.

Looking at the so-called concep-

tual design for the wished for addition with an experienced contractor's eye, it would be hard to imagine a more costly way to add on even if it were necessary. I have seen and read your brochure with your questions and answers and have a few questions of my own. Since when do we need a greenhouse? What's the matter with the front entrance? What makes you think this addition will improve the quality of education in our schools? I have many more but space forbids.

I have a few answers too. The greatest need of our school system

See Letters/Page 4

CHARLEVOIX COUNTY PRESS

(USPS 396480)

Editor-Publisher
Office Manager
Production Manager

James F. Silbar
Patricia E. Silbar
Kathy Beal

Correspondents:

Jennifer Burr
Margaret Worgess

Reg Sharkey
Gail Ware

Bea Smith
Nancy Northrup

Photographer

James Gallap

Copyright 1991, Silbar Communications, Inc. All Rights Reserved

Published by Silbar Communications, Inc., James F. Silbar, President, P.O. Box A, 108 Groveland, Boyne City, Michigan 49712. Published weekly on Wednesday.

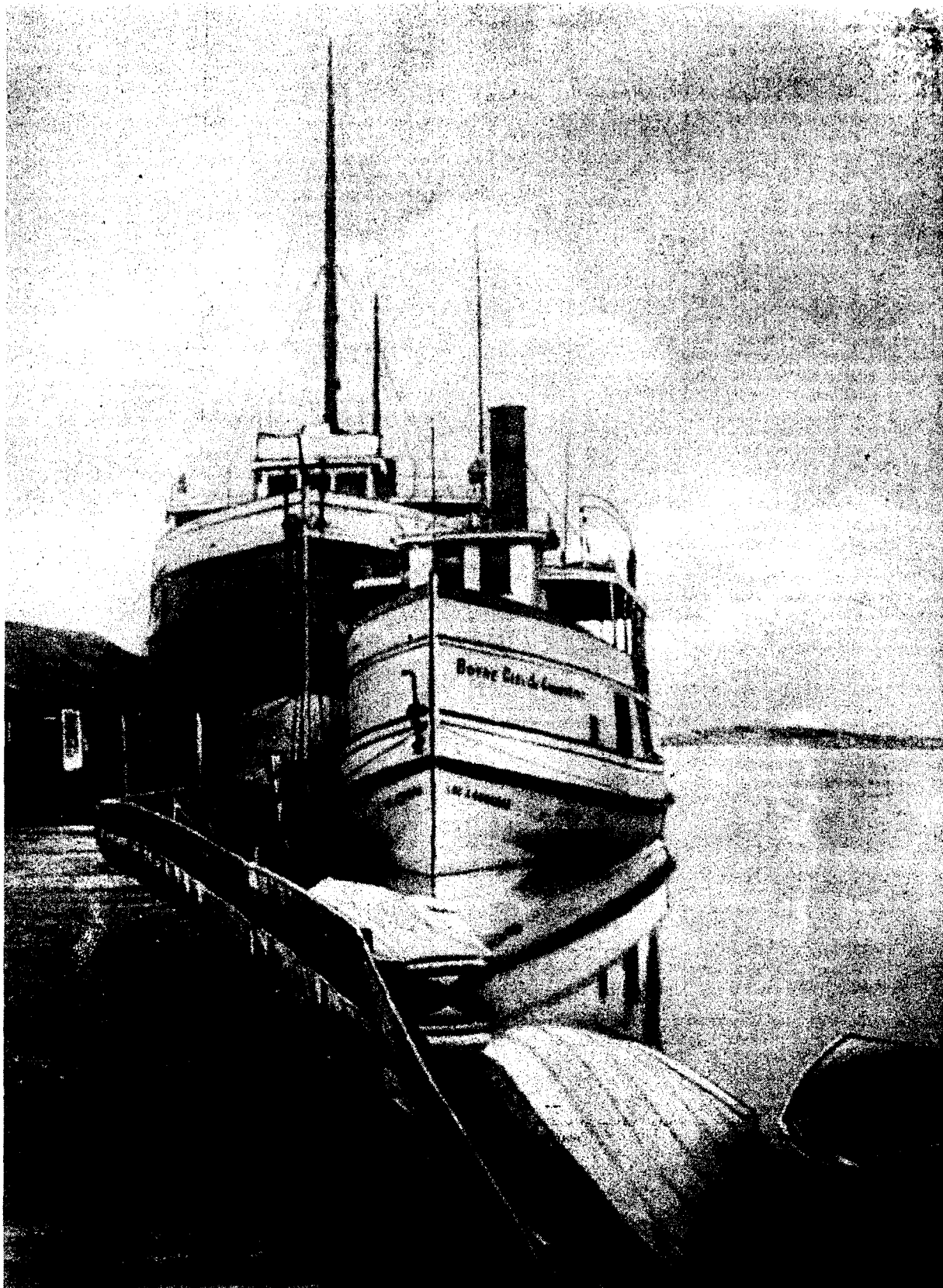
PUBLICATION of advertisements or editorial commentary implies neither endorsement nor approval by The Charlevoix County Press.

MAIL SUBSCRIPTION RATES: Charlevoix County \$16 per year; elsewhere in the United States \$24 per year. Single copies 35 cents. Singly mailed copies including postage, \$1. Second Class postage paid at Boyne City, Michigan by Silbar Communications, Inc. (USPS 396480).

DEADLINES for general news, notices, display advertising, photographs and classified advertising is 5:00 p.m. Monday.

SEND ADDRESS CHANGES to The Charlevoix County Press, P.O. Box A, 108 Groveland St., Boyne City, Michigan 49712. Phone 616-582-6761.

Remembrances



Take a short walk on the passenger dock and get out to the boats that will take you to Charlevoix as you look at this old picture of the docks and boats that used to ply the harbor around the Boyne City area back about the turn of the century. You may still travel

around the lake this summer as two boat companies are planning on coming to Boyne City to provide trips on the lake using passenger docks.

Jottings

WITH JIM SILBAR

Did you get to see the caravans leaving town last Friday? Or were you part of it reading the newspaper a week late?

I did. I saw about two caravans leaving town. I estimated that 40 percent of the first one was leaving for some warmer climate, while the other caravan was leaving for some western winter climate with about another 40 percent of the populace.

That only leaves about 20 percent of the people left in town to shop, to work and to play.

I know because one of my family left with one of the caravans leaving me behind. It is tough to let someone else go to enjoy themselves when you have to stick around to keep up with all of what's going on in the community.

There are days when I wish I could just leave like others, just shut the doors and go.

But in this business, there are no times like that unless everybody in town took out a subscription, and every business advertised with us exclusively so we could afford to have about six or seven people on the staff that aren't there now.

Then I could just get in the car and go. At least for a couple of weeks.

That is my problem. I get too involved with the community to leave for a long time. I always wonder what happened while I was gone.

Was there a major fire? Did the city outlaw new construction? Did the school board shut down for

more than just spring break? I don't know why I need to be so informed, just curiosity, I guess.

But I would like to spend a little time in the sun someday.

Especially since I woke up this Monday to an inch of snow on the ground. I thought it must have been some cruel April Fool's joke as I looked out the window after

getting up for the day.

And I was just thinking about getting out for the day in a short sleeved shirt, too.

But that thought went into the cold as I dressed in my usual long sleeve shirt, got out the boots I had put away for the summer, and went off to work like most others who are still left in the community.

So it's up to us who is left around here to support each other and get us through the weeks ahead.

Let's see who can have the most friendly face around town? Who can have the best attitudes for facing still more winter? And who can keep a positive condition when

See Jottings/Page 4

LAKE STREET VIDEO & MUSIC

celebrates the May 3rd release of Disney's classic "Jungle Book" with a Children's Coloring Contest!

- Entries will be judged in four age groups
Ages 2-3, 4-5, 6-8 and 9-10
- 1st Place winners will receive their very own video copy of "Jungle Book"
- Children must return their entry no later than 4-30-91
- Winners will be notified May 3rd

PICK UP YOUR ENTRY TODAY!



Open: Mon. - Thur. 10-9
Fri. & Sat. 10-10
Sunday 12-8

104 S. Lake Street,
Boyne City, MI 49712
(616) 582-6144



Make sure tax returns complete and right, says CPA association

The Michigan Association of CPAs cautions taxpayers who have worked diligently on their taxes not to rush through the actual completion of the form. According to the Internal Revenue Service (IRS), one in five tax returns contain some kind of clerical error - wrong or missing Social Security numbers, a mathematical error or a missing form. These simple mistakes can affect the processing of your return and draw the attention of the IRS.

If you want to look back on tax season without remorse, the Michigan Association of CPAs suggests you review this last-minute checklist.

Here's one taxpayer pitfall to avoid: deducting reimbursed expenses. For example, Pat's annual medical expenses came to \$3,700. As he understood the tax law, these expenses were deductible to

the extent that they exceeded 7.5 percent of his adjusted gross income (AGI), which was \$36,000. Thus, on his tax return, he deducted \$1,000. What Pat failed to take in to account, however, was that his insurance company had reimbursed \$3,000 of his medical costs. As a result, Pat could not deduct a single penny of his unreimbursed medical expenses.

Before mailing your tax return, carefully review your miscellaneous medical and casualty-loss deductions to ensure that you have not accidentally included any expenses reimbursed by your employer or an insurance company.

Your filing status is important. It dictates the tax rate you will use to calculate your tax liability. Your filing status also determines whether you are eligible to claim certain exemptions, deductions and credits.

You should attach to your return a W-2 form from each employer for whom you worked, showing your wages and the amount of income and social security taxes withheld. If you receive a pension or annuity, you should receive a Form W-2P. Be sure the total income for all W-2 forms submitted corresponds to the figure you enter on your return. The IRS asks that you staple your W-2 form(s) to the front of your Form 1040 about halfway down the page. You should not staple through the entire return.

Banks, brokerage firms and other institutions issue 1099 forms to report the interest and dividends your investments have earned. Unlike W-2 forms, 1099 forms do not have to be attached to your return (unless tax withholding is shown on these forms). The forms should be checked to ensure you have reported all the interest and

dividends attributed to your accounts.

On your 1990 return, you must report a Social Security number for any dependent who was at least two years old by the end of 1990. Next year, you will have to report Social Security for any dependent who is at least one year old. Failure to list this number may result in a \$50 penalty. Also, if you are claiming a tax credit for a child or other dependent care, you will need to provide the taxpayer identification number or Social Security number of the care provider, along with the provider's name and address.

Your tax return should be submitted in a certain order. Form 1040 should always be on top, followed by Schedules A, B, C, D, E, F, G, R, SE, and W, in alphabetical order (as needed). Numerical forms should follow next in numerical order. Behind

those comes any other statements or other unofficial documents you submit.

Check your return and schedules to make sure there are no errors in your math. If possible, have someone else go over your arithmetic. If you do need to change a figure, determine if this change affects figures elsewhere on your return.

To cut down on math errors, the IRS allows you to round off figures to the nearest dollar. Remember that if you choose to do so, you must be consistent and round off all entries on your return and schedules.

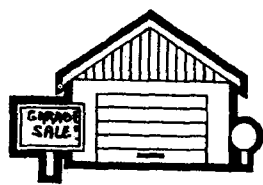
Even the smallest mistakes, such as forgetting that both you and your spouse must sign a joint tax return, can have serious consequences. CPAs warn taxpayers that the Internal Revenue Service may treat unsigned returns as if they had never been filed. As a result, you could be penalized 5 percent of the net tax due for each month the return is late, with a maximum penalty of 25 percent.

Be aware that if you paid someone to prepare your return, that person must sign as the per-

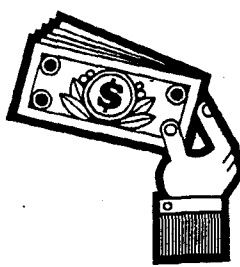
parer and furnish you with a copy. But remember you are responsible for the accuracy of every line of your return even if you pay a preparer to complete your return. If you owe tax, be sure your check is signed and made out for the correct amount. It's a good idea to write your social security number on your check.

If you are simply unprepared to file a carefully prepared and documented tax return, the worst mistake you can make is failing to file for an extension. You can request a filing extension by submitting Form 4868 by April 15, 1991. The one-page form requires you to estimate your tax liability for 1990 and pay any tax due. By submitting the form, you can push the filing deadline to August 15, thus gaining an additional four months to prepare and file your tax return.

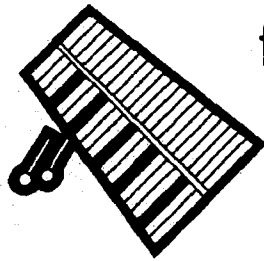
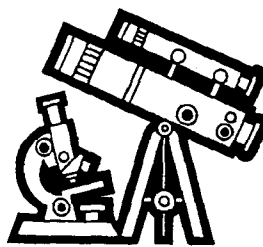
Whether you meet the April 15 or August 15 deadline, be sure to carefully review your tax return before mailing it - that last-minute check-up can save you the time and trouble associated with corresponding with the Internal Revenue Service.



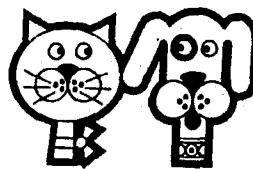
Spring is here! Turn those spring cleaning chores into extra cash in your pockets.



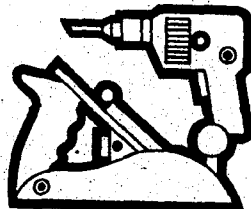
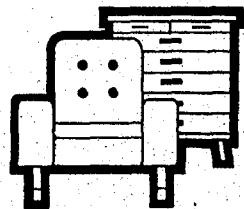
With the spring weather, now is the time to plan your yard, garage, basement, or attic sale with the help of the Charlevoix County Press classified section.



Call our office to have a friendly ad person help you with writing your ad. It's only 20 cents per word, so you will be able to afford to reach the local shoppers.



Call 582-6761
between 9:30 and 5:30
Monday through Friday.



Barbershoppers concert plans set for May 4th

Plans are well underway for the 46th Annual Loton Wilson Bush League Barbershoppers concert and contest which will be this year May 4th, according to members of the Boyne City Chapter.

The contest features inexperienced barbershopper quartets, giving them an opportunity to compete in a regular contest under real-life competitive conditions. According to the club, many of the district champions won their first

contest here at Boyne City. The rules for the contest make it unique from other contests the national and statewide organization holds. A quartet must not have placed in the top three in district competition and has never performed at the International get-together.

The rules are the same as for any of the organizations competitions with one exception, the quartets do not have to appear in costume.

Last year's winner, "The Whole Shebang" quartet from Grand Rapids will be appearing as the featured quartet at the evening concert, along with the winner and the runner up quartets from the contest which is held earlier during the day.

Tickets are available at the door or from members of the Snowbelt Chorus.

Tidbits

Is a lid required over a burn barrel? Yes. While ventilation is necessary for combustion, ventilation holes in the lid should not be larger than 3/4 inch. There should also be 3/4 inch holes in the sides and bottom of the burn barrel to provide adequate ventilation.

WANTED !!

JAPANESE SWORDS

UP TO \$3,000 FOR LONG SWORDS and UP to \$400 FOR SHORT AND MILITARY SWORDS. IF RUSTY DO NOT TRY AND CLEAN. FOR APPOINTMENT CALL: (313) 647 - 6236.

SCHOOL LUNCH MENUS

APRIL 8-12
BOYNE CITY

Monday: cheeseburgers or corn dogs, or spinach, applesauce
Tuesday: pizza or scalloped potatoes and ham, buttered peas, peaches
Wednesday: submarines or hot dogs, vegetable soup, French fries, peas
Thursday: pizza or sloppy Joes, green beans, mixed fruit
Friday: Cook's Choice

BOYNE FALLS

Monday: hammy sammy or barbecue rib with bun, crispy tator tots, pickle chips, sliced pears
Tuesday: chicken patties or macaroni and cheese, mashed potatoes with gravy, buttered peas, pineapple
Wednesday: lasagna or sliced turkey sandwich, green beans, peaches, cookie
Thursday: fresh taco salad with refried beans or submarine with vegetable soup, seasoned rice, fresh fruit
Friday: hamburger with cheese, or burrito with taco or cheese sauce, buttered corn, corn chips, banana

EAST JORDAN

Monday: hamburgers, subs, chicken patty on bun, French fries, pickles, peaches
Tuesday: lasagna, nachos with cheese, corn dogs, green beans, mixed fruit
Wednesday: taco salad, spaghetti, tuna sandwiches, cole slaw, peas
Thursday: roast turkey, mashed potatoes, gravy, mixed vegetables, toastie dogs, pineapple
Friday: pizza, chalupas, corn, apple sauce

Bread and milk served daily. In school lunch no child shall be discriminated against for any reason.

These lunch menus are provided courtesy of

Glen's

FROM OUR FAMILY - TO YOURS

Boyerne City - East Jordan

Buy-Low opens 3rd store in Charlevoix

"This will be the last new store for us for a few years," said Director of Development Jim Maybank, as he looked over the new Buy-Low Supermarket that is opening this week.

The store is located on the south of Charlevoix next to the new K-Mart and hopes to draw customers from Charlevoix as well as East Jordan and Boyne City store officials said.

The store has 36,414 square feet of selling space that is filled with items customers may want to purchase. The store will feature a scratch bakery, where breads and other items are made from scratch rather than just a finishing type of

bakery where baked goods are given their final bakeoff.

They will also be featuring a full line meat department with both self serve and full service counters, ready and willing to fulfill any and all needs of customers they said.

Other features of the new market include a hot and cold deli, a floral shop, a complete video department including Nintendo games, and a full fresh produce department.

The goal of the firm is to have foods available for those who may want gourmet items to those who will want to make the food dollar go a little further through their "Price Saver" items.

The new store, the third in the area for the new chain, features the latest in store design and technology. From the check-out counters to the specialized refrigeration units, the entire store has the latest in design.

"The driving force is service to our customers with one stop convenience," said Jack Smith the Director of Development and Real Estate for the chain, "With our focus on customer service and having very clean stores and operations."

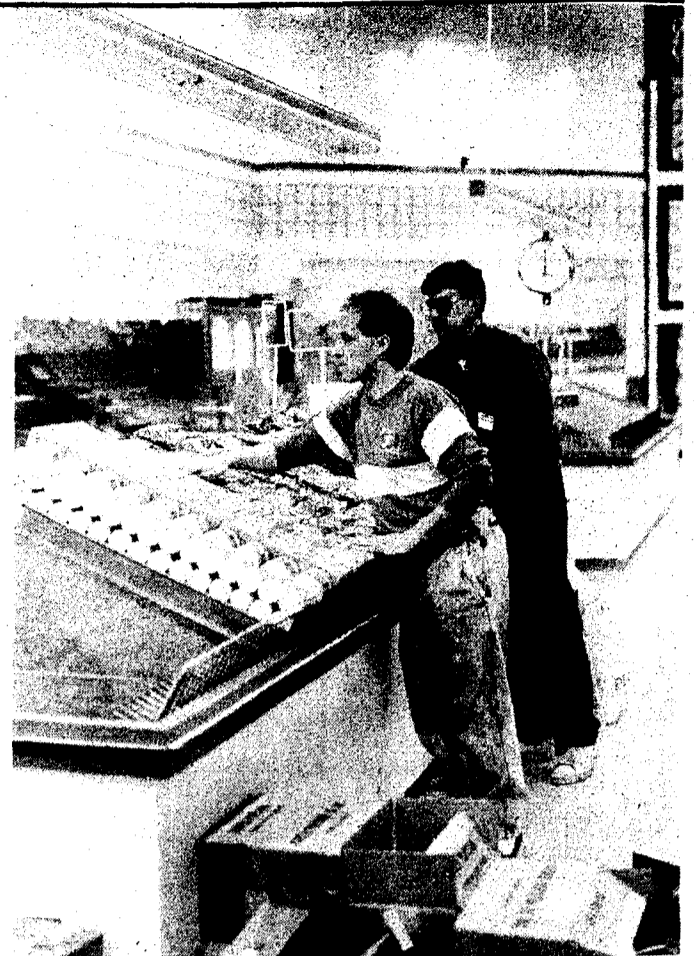
Maybank joined the conversation saying this new supermarket is for the 21st century and

features an upscale look with a low price image.

The store will have 63 employees and will operate 24 hours a day, Maybank continued.

Managing the store will be Pat Handy, formerly of Boyne City. Handy has worked for Carters and Buy-Low stores before becoming the manager. He has moved to Charlevoix to be close to the store's operations.

The Assistant Manager is Joe Hebden, who came to the chain from the Dingman's Market in Bellaire. The two have many years of grocery experience and are eager to serve the customers from this area.



New Buy-Low Store Manager Pat Handy and Assistant Store Manager Joe Hebden, started the stocking of the produce aisle as they and 63 other employees of the new supermarket in Charlevoix complete the task of filling the shelves in preparation for the store's opening today.

Quintet to perform at McCune April 9

The Asbury Brass Quintet has rapidly become one of the nation's most respected chamber music ensembles. In one season they won first prize at the Fischeff International Chamber Music Competition and the prestigious Sanderson Award at the Coleman Chamber Music Competition - a combination that has not been equaled. The success of their concerts on the west coast, in the southwest and midwest, and residencies in communities and at universities, has generated enthusiastic audiences for their special blend of virtuosity, musically and superb musical taste.

Quintet members have played with the Chicago Symphony, Milwaukee Symphony, New York Philharmonic, and Seattle Symphony. The Asbury Brass Quintet began making music together

while graduate students at Northwestern University in Illinois. Their adventurous programming includes inventive transcriptions of classical compositions, jazz standards, spirituals, rags, folk songs and dances, marches, and music of the American musical theatre.

The Quintet will be appearing at the McCune Arts Center as the last performance group on the Crooked Tree Arts Council 1990-1991 Concert Series on Tuesday, April 9 at 8:00 p.m. Tickets are available at \$10 for General Admission. Patron tickets are \$12, with reserved seating and attendance at the Afterglow to meet the performers. Please call the Crooked Tree Arts Council office at 347-4337 for reservations if you are not already a member of the Concert Series. Tickets will also be on sale at the Box Office.

Farmers eligible for disaster loans

Farmers in 15 northern Lower Peninsula counties are eligible for disaster assistance because of damage to fruit crops by frost, freezing temperatures, hail and high winds from May 2 to July 4, 1990. Former Gov. James J. Blanchard requested the assistance for farmers in Antrim, Benzie, Grand Traverse, Leelanau, Mason and Manistee counties. Fruit and vegetable farmers in the neighboring counties of Charlevoix,

Crawford, Kalkaska, Lake, Missaukee, Newaygo, Oceana, Otsego and Wexford may also qualify for federal low-interest emergency loans through the Farmers Home Administration. Applications must be received by April 29, 1991. For further information, contact the local office of the Farmers Home Administration located at 2206 Mitchell Park Dr. 11, Petoskey, Michigan or phone the office at 616-347-4551.

Cooking

WITH BEA SMITH

BARBECUES

When I think of college barbecues I recall my daughter's first when she was invited to one at Purdue University. Of course, she wanted to do the correct thing and was even concerned about how to dress. She asked her date and, believe it or not, he said, "The girls will probably wear drinzel skirts and blouses." Which they did. Oh dear, I guess this tells my Gloria's age!

She came home happy and excited and said, "I'm glad that you and Daddy taught me that steak is best medium rare, I loved it." Also she had no problem eating the watermelon. I doubt very much if girls have these kind of problems anymore; our society is so much more casual in their dining and the way they dress.

Americans have always been casual about eating their corn on the cob even though some etiquette experts, especially the French, have frowned upon such "grossness." From "Hints on Etiquette" published in 1844 by Clarence Day. "It is not elegant to gnaw corn. The kernels should be scored with a knife, scraped off into the plate, and eaten with a fork. Ladies should be particularly careful how they manage so ticklish a dainty, lest the exhibition rub off a desirable romance."

The best corn that I have ever eaten was at a picnic long ago. The corn was picked fresh and soaked in cold water until ready to put on the grill and roasted with the husks on. You can cut off the pointed end of the ear of corn and pull out the silk if you wish before the roasting. This makes it a little easier to handle.

I wonder why everything cooked in large quantities always tastes better. I have never tasted beef as good as at Ogdensburg Methodist Church on Old Mission Peninsula. Every year they have an ox roast, roasted over a pit. The food is out of this world.

Then there is the famous barbecued chicken that the Rotary Club puts on every Fourth of July in Boyne City. There is a real party atmosphere, the chicken is delicious and people don't even mind waiting in a long line for it.

If you are preparing a barbecue at home, I am sure that you would like this:

MARINATED SLICED PORK

The other white meat.

1 qt. beer
1 cup soy sauce
1 tsp. black pepper
1 Tbsp. fresh lemon juice.
Sliced pork to equal twelve 5 oz. portions of sliced pork, cut 1/2" thick.

Mix all ingredients except pork and marinate pork slices over night. Grill over hot coals to desired doneness.

We can even barbecue for one or two. Many of us have discovered the mini barbecue kettles and the small hibachis. It takes only about 10 to 12 briquettes to produce long lasting coals for a dinner. Anything that we would fix in a larger barbecue can be done on a small scale. It's fun! There are no pots and pans to wash and the food tastes so good.

TURKEY SHISH KABOBS

You can make these kabobs with beef, chicken or firm fish as well as the turkey.

1/4 cup pineapple juice
1/4 cup catsup
1 Tbsp. honey
1/2 tsp. prepared mustard
1 tsp. Kitchen Bouquet
Dash of Tabasco
1/4 lbs. turkey or other meat cut into 1/2 inch cubes
Pineapple chunks

Combine the first 7 ingredients and marinate meat for several hours. Just before time to eat, thread turkey pieces alternately with pineapple chunks on skewers and broil over hot coals, turning regularly and basting with marinade. Grill until meat is done and pineapple sizzling hot. Serve with rice.

Try this barbecue sauce on hamburgers or any broiled meat.

VERNORS BAR-BE-CUE SAUCE

1 large can tomato sauce
1 small can tomato paste
1 1/2 cups ginger ale
1 tsp. salt
1/2 tsp. pepper
2 Tbsp. brown sugar
2 Tbsp. Worcestershire Sauce
2 garlic cloves, mashed or 1/2 teaspoon garlic powder

Combine tomato sauce and tomato paste. Measure ginger ale and let set for 30 minutes. Stir into tomato mixture with salt, pepper, sugar, Worcestershire and garlic.

Simmer over low heat about an hour or until thickened. Brush on spareribs during the last hour of cooking, or any time while hamburgers are broiling.

Michigan Bell Service Bulletin

Important: Action you must take if your phone number begins with

536.

Now you have a choice of long distance companies for Dial 1 Plus service. Don't leave that choice to chance.

Watch the mail and make your choice soon.

If you have not already received it, you soon will be getting complete information from Michigan Bell by mail, along with a ballot listing your choices of Dial 1 Plus long distance companies. Your Dial 1 Plus options and the steps you should take are described in detail. And you will be given the date by which you must make your selection to avoid having a long distance company randomly selected for you.

If your phone number does not begin with the number above, don't worry. You will be notified when your area is ready for Dial 1 Plus service.

What is Dial 1 Plus?

Dial 1 Plus is simply dialing "1," plus the area code (when necessary), plus the telephone number to complete a long distance call outside of your LATA. Companies offering long distance service can now offer you the same Dial 1 Plus service previously available only to customers of AT&T.

Don't give up your right to choose.

As part of the restructuring of the telephone industry, you must choose a company for Dial 1 Plus service or such a company will be chosen for you. Should this happen, it will be a random selection by computer. We urge you to make your own choice—because a company selected at random will not necessarily be one that best serves your specific needs. The information you receive will include telephone numbers for the various long distance companies, so you can easily look into their services and charges before you make your choice.

Need more help? Let's Talk!

Michigan Bell cannot recommend a long distance company, but if you have any questions about Dial 1 Plus service, or if you have misplaced the ballot we mailed, just call your business office. The number is listed on your phone bill or in the front of your Ameritech PagesPlus® directory.

 **Michigan Bell**
AN AMERITECH COMPANY