

Annual Tax Sale.

STATE OF MICHIGAN, County of Charlevoix. The Circuit Court for the County of Charlevoix in Chancery. In the matter of the petition of ORAMEL B. FULLER, Auditor General of the State of Michigan, for and in behalf of said State, for the sale of certain lands for taxes assessed thereon.

(Seal) Counter-signed, CHARLES H. EMREY, Clerk.

STATE OF MICHIGAN.

To the Circuit Court for the County of Charlevoix in Chancery: The petition of ORAMEL B. FULLER, Auditor General of the State of Michigan, for and in behalf of said State, respectfully shows that the list of lands hereinafter set forth and marked "Schedule A," contains a description of all lands in said County of Charlevoix upon which taxes were assessed for the years mentioned therein, and which were returned as delinquent for non-payment of taxes; and which taxes have not been paid;

ORAMEL B. FULLER, Auditor General of the State of Michigan, for and in behalf of said State.

SCHEDULE A.

TAXES FOR 1919 CITY OF BOYNE CITY

Table with columns: Section, Acres, Amount of Taxes, Interest, Collection Fee, Charges, Total. Includes Orchard Park Addition.

TAXES OF 1921 TOWNSHIP 32 NORTH OF RANGE 4 WEST

Table with columns: Section, Acres, Amount of Taxes, Interest, Collection Fee, Charges, Total. Lists various sections and their tax details.

TOWNSHIP 33 NORTH OF RANGE 4 WEST

Table with columns: Section, Acres, Amount of Taxes, Interest, Collection Fee, Charges, Total.

A piece of land beginning at a point 13 chains 424 links south and 19 chains 17 links east of center 1/2 post thence south 57 rods east to Section line between Sections 17 and 18 north to angle in highway west along highway to beginning.

Table with columns: Section, Acres, Amount of Taxes, Interest, Collection Fee, Charges, Total. Lists sections 18, 29, 30, 31, 32, 33, 34.

Table with columns: Section, Acres, Amount of Taxes, Interest, Collection Fee, Charges, Total. Lists sections 1, 2, 3, 4, 5, 6, 7, 8, 9, 10, 11, 12, 13, 14, 15, 16, 17, 18, 19, 20, 21, 22, 23, 24, 25, 26, 27, 28, 29, 30, 31, 32, 33, 34, 35, 36, 37, 38, 39, 40.

TOWNSHIP 32 NORTH OF RANGE 5 WEST

Table with columns: Section, Acres, Amount of Taxes, Interest, Collection Fee, Charges, Total. Lists sections 1, 2, 3, 4, 5, 6, 7, 8, 9, 10, 11, 12, 13, 14, 15, 16, 17, 18, 19, 20, 21, 22, 23, 24, 25, 26, 27, 28, 29, 30, 31, 32, 33, 34, 35, 36, 37, 38, 39, 40.

TOWNSHIP 33 NORTH OF RANGE 5 WEST

Table with columns: Section, Acres, Amount of Taxes, Interest, Collection Fee, Charges, Total. Lists sections 1, 2, 3, 4, 5, 6, 7, 8, 9, 10, 11, 12, 13, 14, 15, 16, 17, 18, 19, 20, 21, 22, 23, 24, 25, 26, 27, 28, 29, 30, 31, 32, 33, 34, 35, 36, 37, 38, 39, 40.

TOWNSHIP 32 NORTH OF RANGE 6 WEST

Table with columns: Section, Acres, Amount of Taxes, Interest, Collection Fee, Charges, Total. Lists sections 1, 2, 3, 4, 5, 6, 7, 8, 9, 10, 11, 12, 13, 14, 15, 16, 17, 18, 19, 20, 21, 22, 23, 24, 25, 26, 27, 28, 29, 30, 31, 32, 33, 34, 35, 36, 37, 38, 39, 40.

TOWNSHIP 32 NORTH OF RANGE 7 WEST

Table with columns: Section, Acres, Amount of Taxes, Interest, Collection Fee, Charges, Total. Lists sections 1, 2, 3, 4, 5, 6, 7, 8, 9, 10, 11, 12, 13, 14, 15, 16, 17, 18, 19, 20, 21, 22, 23, 24, 25, 26, 27, 28, 29, 30, 31, 32, 33, 34, 35, 36, 37, 38, 39, 40.

TOWNSHIP 32 NORTH OF RANGE 6 WEST

Table with columns: Section, Acres, Amount of Taxes, Interest, Collection Fee, Charges, Total. Lists sections 1, 2, 3, 4, 5, 6, 7, 8, 9, 10, 11, 12, 13, 14, 15, 16, 17, 18, 19, 20, 21, 22, 23, 24, 25, 26, 27, 28, 29, 30, 31, 32, 33, 34, 35, 36, 37, 38, 39, 40.

TOWNSHIP 33 NORTH OF RANGE 6 WEST

Table with columns: Section, Acres, Amount of Taxes, Interest, Collection Fee, Charges, Total. Lists sections 1, 2, 3, 4, 5, 6, 7, 8, 9, 10, 11, 12, 13, 14, 15, 16, 17, 18, 19, 20, 21, 22, 23, 24, 25, 26, 27, 28, 29, 30, 31, 32, 33, 34, 35, 36, 37, 38, 39, 40.

TOWNSHIP 33 NORTH OF RANGE 7 WEST

Table with columns: Section, Acres, Amount of Taxes, Interest, Collection Fee, Charges, Total. Lists sections 1, 2, 3, 4, 5, 6, 7, 8, 9, 10, 11, 12, 13, 14, 15, 16, 17, 18, 19, 20, 21, 22, 23, 24, 25, 26, 27, 28, 29, 30, 31, 32, 33, 34, 35, 36, 37, 38, 39, 40.

Table with columns: Section, Acres, Amount of Taxes, Interest, Collection Fee, Charges, Total. Lists sections 1, 2, 3, 4, 5, 6, 7, 8, 9, 10, 11, 12, 13, 14, 15, 16, 17, 18, 19, 20, 21, 22, 23, 24, 25, 26, 27, 28, 29, 30, 31, 32, 33, 34, 35, 36, 37, 38, 39, 40.

TOWNSHIP 32 NORTH OF RANGE 6 WEST

Table with columns: Section, Acres, Amount of Taxes, Interest, Collection Fee, Charges, Total. Lists sections 1, 2, 3, 4, 5, 6, 7, 8, 9, 10, 11, 12, 13, 14, 15, 16, 17, 18, 19, 20, 21, 22, 23, 24, 25, 26, 27, 28, 29, 30, 31, 32, 33, 34, 35, 36, 37, 38, 39, 40.

TOWNSHIP 32 NORTH OF RANGE 7 WEST

Table with columns: Section, Acres, Amount of Taxes, Interest, Collection Fee, Charges, Total. Lists sections 1, 2, 3, 4, 5, 6, 7, 8, 9, 10, 11, 12, 13, 14, 15, 16, 17, 18, 19, 20, 21, 22, 23, 24, 25, 26, 27, 28, 29, 30, 31, 32, 33, 34, 35, 36, 37, 38, 39, 40.

TOWNSHIP 32 NORTH OF RANGE 6 WEST

Table with columns: Section, Acres, Amount of Taxes, Interest, Collection Fee, Charges, Total. Lists sections 1, 2, 3, 4, 5, 6, 7, 8, 9, 10, 11, 12, 13, 14, 15, 16, 17, 18, 19, 20, 21, 22, 23, 24, 25, 26, 27, 28, 29, 30, 31, 32, 33, 34, 35, 36, 37, 38, 39, 40.

TOWNSHIP 32 NORTH OF RANGE 7 WEST

Table with columns: Section, Acres, Amount of Taxes, Interest, Collection Fee, Charges, Total. Lists sections 1, 2, 3, 4, 5, 6, 7, 8, 9, 10, 11, 12, 13, 14, 15, 16, 17, 18, 19, 20, 21, 22, 23, 24, 25, 26, 27, 28, 29, 30, 31, 32, 33, 34, 35, 36, 37, 38, 39, 40.

TOWNSHIP 32 NORTH OF RANGE 6 WEST

Table with columns: Section, Acres, Amount of Taxes, Interest, Collection Fee, Charges, Total. Lists sections 1, 2, 3, 4, 5, 6, 7, 8, 9, 10, 11, 12, 13, 14, 15, 16, 17, 18, 19, 20, 21, 22, 23, 24, 25, 26, 27, 28, 29, 30, 31, 32, 33, 34, 35, 36, 37, 38, 39, 40.

TOWNSHIP 32 NORTH OF RANGE 7 WEST

Table with columns: Section, Acres, Amount of Taxes, Interest, Collection Fee, Charges, Total. Lists sections 1, 2, 3, 4, 5, 6, 7, 8, 9, 10, 11, 12, 13, 14, 15, 16, 17, 18, 19, 20, 21, 22, 23, 24, 25, 26, 27, 28, 29, 30, 31, 32, 33, 34, 35, 36, 37, 38, 39, 40.

TOWNSHIP 32 NORTH OF RANGE 6 WEST

Table with columns: Section, Acres, Amount of Taxes, Interest, Collection Fee, Charges, Total. Lists sections 1, 2, 3, 4, 5, 6, 7, 8, 9, 10, 11, 12, 13, 14, 15, 16, 17, 18, 19, 20, 21, 22, 23, 24, 25, 26, 27, 28, 29, 30, 31, 32, 33, 34, 35, 36, 37, 38, 39, 40.

TOWNSHIP 32 NORTH OF RANGE 7 WEST

Table with columns: Section, Acres, Amount of Taxes, Interest, Collection Fee, Charges, Total. Lists sections 1, 2, 3, 4, 5, 6, 7, 8, 9, 10, 11, 12, 13, 14, 15, 16, 17, 18, 19, 20, 21, 22, 23, 24, 25, 26, 27, 28, 29, 30, 31, 32, 33, 34, 35, 36, 37, 38, 39, 40.

TOWNSHIP 32 NORTH OF RANGE 6 WEST

Table with columns: Section, Acres, Amount of Taxes, Interest, Collection Fee, Charges, Total. Lists sections 1, 2, 3, 4, 5, 6, 7, 8, 9, 10, 11, 12, 13, 14, 15, 16, 17, 18, 19, 20, 21, 22, 23, 24, 25, 26, 27, 28, 29, 30, 31, 32, 33, 34, 35, 36, 37, 38, 39, 40.

TOWNSHIP 28 NORTH OF RANGE 6 WEST



Part of nw 1/4 of sec 10 commencing 16 rods east of southeast corner, Lot 44 Beardley's 2nd Addition to Village of Boyne east on north side of State Street 8 rods, north 8 rods, west 8 rods, south 8 rods to beginning (Lot 4 Block A Beardley's Unrecorded Addition) Section 35 44.79 8.73 1.79 1.00 54.31

TOWNSHIP 28 NORTH OF RANGE 6 WEST



Part of sec 10 commencing at a point in north line of Spring street extended Wm. H. White and Co's Addition to Village of Boyne South 79 degrees 20 minutes west 400 feet from southeast corner of said Addition on east side of Boyne River east along road 436 feet north 185 feet to Boyne River west and south along Boyne River to beginning (Ashery) Section 35 42.45 9.06 1.96 1.00 62.09

TOWNSHIP 28 NORTH OF RANGE 6 WEST



Part of nw 1/4 of sec 10 commencing 8 rods south of northwest corner, east 10 rods south 8 rods west 10 rods north 8 rods to beginning (Lots 3 and 4 Block E. Ida M. Call's Unrecorded Addition to Boyne) Section 36 2.78 .54 .11 1.00 4.43

Beardsley's Second Addition to the Village of Boyne

Part of Lot 11 and 12 commencing at southeast corner of lot 12, south parallel to east side of lot 11 and 12, 125 feet to southeast corner of lot 11, south 125 feet to southeast corner of lot 12, west 125 feet to place of beginning.

Table with 5 columns: Lot number, and four numerical values representing area or dimensions.

Part of lot 19 commencing 250 feet south of southeast corner west 60 feet across lot, south 140 feet to southwest corner, east 62 feet 100 feet to southeast corner north 172 feet 100 feet to beginning.

Table with 5 columns: Lot number, and four numerical values.

Wm. H. White & Co's Subdivision of a part of Lot No 35 of Beardsley's Second Addition to Village of Boyne

Table with 5 columns: Lot number, and four numerical values.

Cadwell's Addition to Boyne

Table with 5 columns: Lot number, and four numerical values.

Russell M. Cadwell's Addition (to Spring Harbor)

Table with 5 columns: Lot number, and four numerical values.

Calbert's Addition to the Village of South Boyne

Table with 5 columns: Lot number, and four numerical values.

Hiram B. Chapman and William T. Addis Addition (to Spring Harbor)

Table with 5 columns: Lot number, and four numerical values.

Hiram B. Chapman and Russell M. Cadwell's Addition (to Spring Harbor)

Table with 5 columns: Lot number, and four numerical values.

Cobb's Addition to South Boyne

Table with 5 columns: Lot number, and four numerical values.

Collings and Cranes Addition to the Village of Boyne

Table with 5 columns: Lot number, and four numerical values.

Glenwood Beach Resort

Table with 5 columns: Lot number, and four numerical values.

Harris's Addition (to the Village of Boyne)

Table with 5 columns: Lot number, and four numerical values.

E. S. Johnson's Addition to Boyne

Table with 5 columns: Lot number, and four numerical values.

Lewis's Addition to Boyne

Lot 1, 2, 3, 4, 5, 6, 7, 8, 9, 10, 11, 12, 13, 14, 15, 16, 17, 18, 19, 20, 21, 22, 23, 24, 25, 26, 27, 28, 29, 30, 31, 32, 33, 34, 35, 36, 37, 38, 39, 40, 41, 42, 43, 44, 45, 46, 47, 48, 49, 50, 51, 52, 53, 54, 55, 56, 57, 58, 59, 60, 61, 62, 63, 64, 65, 66, 67, 68, 69, 70

Table with 5 columns: Lot number, and four numerical values.

C. G. Lewis's Addition to Boyne

Table with 5 columns: Lot number, and four numerical values.

Melntire's Addition to Boyne

Table with 5 columns: Lot number, and four numerical values.

Miller's Addition (to Spring Harbor)

Table with 5 columns: Lot number, and four numerical values.

R. Y. Morgan's Addition

Table with 5 columns: Lot number, and four numerical values.

N. Morgan's Addition to the Village of South Boyne

Table with 5 columns: Lot number, and four numerical values.

Nicholls and Morgan's Second Addition to South Boyne

Table with 5 columns: Lot number, and four numerical values.

Commencing at southeast corner of Lot 2 northeast 100 feet along lot line, northwest 66 feet southwest 100 feet to Boyne Falls road, southeast 66 feet to beginning.

Table with 5 columns: Lot number, and four numerical values.

Nicholls and Morgan's Third Addition to South Boyne

Table with 5 columns: Lot number, and four numerical values.

Wards Subdivision of Lot 275 Block 13 Nicholls and Morgan's Second Addition to Boyne

Table with 5 columns: Lot number, and four numerical values.

Nicholls and Morgan's Third Addition to South Boyne

Table with 5 columns: Lot number, and four numerical values.

Orchard Park Addition

Table with 5 columns: Lot number, and four numerical values.

Commencing at northeast corner of lot 274 Southeast on lot line 50-40 feet south on lot line 30 feet north about 70 feet to Morgan street northeast along lot line 55 feet to beginning.

Table with 5 columns: Lot number, and four numerical values.

Commencing at southwest corner of Lot 270, northeast parallel to southeast side of said Lot 91 feet southeast parallel to northeast side of said lot 47 8-10 feet southwest 126 50-100 feet to Pleasant Avenue north 59 7-10 feet to beginning.

Table with 5 columns: Lot number, and four numerical values.

Block 1, 2, 3, 4, 5, 6, 7, 8, 9, 10, 11, 12, 13, 14, 15, 16, 17, 18, 19, 20, 21, 22, 23, 24, 25, 26, 27, 28, 29, 30, 31, 32, 33, 34, 35, 36, 37, 38, 39, 40, 41, 42, 43, 44, 45, 46, 47, 48, 49, 50, 51, 52, 53, 54, 55, 56, 57, 58, 59, 60, 61, 62, 63, 64, 65, 66, 67, 68, 69, 70, 71, 72, 73, 74, 75, 76, 77, 78, 79, 80, 81, 82, 83, 84, 85, 86, 87, 88, 89, 90, 91, 92, 93, 94, 95, 96, 97, 98, 99, 100

Table with 5 columns: Lot number, and four numerical values.

Block 100, 101, 102, 103, 104, 105, 106, 107, 108, 109, 110, 111, 112, 113, 114, 115, 116, 117, 118, 119, 120

Table with 5 columns: Lot number, and four numerical values.

Block 120, 121, 122, 123, 124, 125, 126, 127, 128, 129, 130, 131, 132, 133, 134, 135, 136, 137, 138, 139, 140

Table with 5 columns: Lot number, and four numerical values.

Block 140, 141, 142, 143, 144, 145, 146, 147, 148, 149, 150, 151, 152, 153, 154, 155, 156, 157, 158, 159, 160

Table with 5 columns: Lot number, and four numerical values.

Block 160, 161, 162, 163, 164, 165, 166, 167, 168, 169, 170, 171, 172, 173, 174, 175, 176, 177, 178, 179, 180

Table with 5 columns: Lot number, and four numerical values.

Block 180, 181, 182, 183, 184, 185, 186, 187, 188, 189, 190, 191, 192, 193, 194, 195, 196, 197, 198, 199, 200

Table with 5 columns: Lot number, and four numerical values.

Block 200, 201, 202, 203, 204, 205, 206, 207, 208, 209, 210, 211, 212, 213, 214, 215, 216, 217, 218, 219, 220

Table with 5 columns: Lot number, and four numerical values.

Block 220, 221, 222, 223, 224, 225, 226, 227, 228, 229, 230, 231, 232, 233, 234, 235, 236, 237, 238, 239, 240

Table with 5 columns: Lot number, and four numerical values.

Block 240, 241, 242, 243, 244, 245, 246, 247, 248, 249, 250, 251, 252, 253, 254, 255, 256, 257, 258, 259, 260

Table with 5 columns: Lot number, and four numerical values.

Block 260, 261, 262, 263, 264, 265, 266, 267, 268, 269, 270, 271, 272, 273, 274, 275, 276, 277, 278, 279, 280

Table with 5 columns: Lot number, and four numerical values.

Block 280, 281, 282, 283, 284, 285, 286, 287, 288, 289, 290, 291, 292, 293, 294, 295, 296, 297, 298, 299, 300

Table with 5 columns: Lot number, and four numerical values.

Block 300, 301, 302, 303, 304, 305, 306, 307, 308, 309, 310, 311, 312, 313, 314, 315, 316, 317, 318, 319, 320

Table with 5 columns: Lot number, and four numerical values.

Block 320, 321, 322, 323, 324, 325, 326, 327, 328, 329, 330, 331, 332, 333, 334, 335, 336, 337, 338, 339, 340

Table with 5 columns: Lot number, and four numerical values.

Block 340, 341, 342, 343, 344, 345, 346, 347, 348, 349, 350, 351, 352, 353, 354, 355, 356, 357, 358, 359, 360

Table with 5 columns: Lot number, and four numerical values.

CITY OF CHARLEVOIX, TOWNSHIP 32 NORTH OF RANGE 5 WEST

Part of sec 1/4 of sec 7 commencing 11 rods 6 feet 6 inches east and 12 rods 3 feet north of northwest corner east 6 rods 2 feet 10 inches to west line of road of Charlevoix Golf Association South to center of E. and C. T. State Road southwesterly to point due south of beginning north to beginning...

Table with 5 columns: Section, and 4 numerical columns. Row 1: Section 23, 68.50, 13.36, 2.74, 1.00, 85.60

Commencing 1840 feet west of 1/4 post on east line of section south 530 feet, west 525 feet north 330 feet, east to beginning...

Table with 5 columns: Section, and 4 numerical columns. Row 1: Section 25, 27.40, 5.35, 1.10, 1.00, 34.85

Part of section commencing on north line of Petokey Avenue 450 1/2 feet east of intersection of north line of Petokey Avenue with Michigan Avenue north 155 1/2 feet, east 86 feet, south 156 feet to north line of Petokey Avenue, west 86 feet to beginning...

Table with 5 columns: Section, and 4 numerical columns. Row 1: Section 25, 22.83, 4.45, .91, 1.00, 29.19

Commencing 40 rods north of southwest corner of sec 1/4 of sec 7 east 16 rods, north 10 rods, south 16 rods, south along 1/4 line to beginning...

Table with 5 columns: Section, and 4 numerical columns. Row 1: Section 27, 18.26, 3.56, .73, 1.00, 23.55

Commencing 536 feet east of southwest corner of sec 1/4 north to south line of W. Wood Avenue, east to southeast corner of Clarke's Addition, south to south line of section west to beginning...

Table with 5 columns: Section, and 4 numerical columns. Row 1: Section 27, 45.67, 8.91, 1.83, 1.00, 57.41

Commencing 40 rods south of northwest corner of section, east 40 rods, south 10 rods west 40 rods, north 10 rods to beginning...

Table with 5 columns: Section, and 4 numerical columns. Row 1: Section 85, 34.26, 6.68, 1.37, 1.00, 43.31

Clarke's Addition

Table with 5 columns: Block, and 4 numerical columns. Rows include Lots 1, 2, 3, 4, 23, 29 and 30, Lots 3 and 4, Lots 5 and 6, Lots 1, 2 and 3, Lots 6 and 7, Lots 10 and 11, east 1/2 of lot 12, Lots 5, 6, 7, 8 and 9, Lots 10, 11, 23 and 29, Lots 12, 13, 26 and 27, 4

Dixon's Addition

Table with 5 columns: Block, and 4 numerical columns. Rows include west 1/2 of Lots 1 and 2, Lot 6, south 10 feet of west 91 feet of lots 7 and 8 and entire lot 9, Lot 3, Lot 13

Eaton's Addition

Table with 5 columns: Block, and 4 numerical columns. Row 1: Block 4, 34.90, 6.81, 1.40, 1.00, 44.11

Mason's Addition

Table with 5 columns: Block, and 4 numerical columns. Rows include Lot 4, Lot 10, Lot 12, Lots 22 and 23, Lot 3, Lot 6

Mason's Second Addition

Table with 5 columns: Block, and 4 numerical columns. Row 1: Block 4, 34.90, 6.81, 1.40, 1.00, 44.11

Newman's Addition

Table with 5 columns: Block, and 4 numerical columns. Row 1: Block 19, 68.50, 13.36, 2.74, 1.00, 85.60

Stockman's Addition

Table with 5 columns: Block, and 4 numerical columns. Row 1: Block C, 2.91, .57, .12, 1.00, 4.60

Upright and Hurlbut's Addition

Table with 5 columns: Block, and 4 numerical columns. Rows include Lot 29, Lot 37, Lot 38, Lot 39, Lot 49, Lot 64, North 1/2 of lot 65, North 1/2 of lot 66, Lot 73, Lot 74, Lots 96 and 97, Lot 106, Lot 118, Lots 120 and 121, Lot 157, Lot 169, West 1/2 of lot 232, Lot 238

Wood's Addition

Table with 5 columns: Block, and 4 numerical columns. Row 1: Block 5, 91.33, 17.81, 3.65, 1.00, 113.79

CITY OF EAST JORDAN, TOWNSHIP 32 NORTH OF RANGE 7 WEST

Part of sec 1/4 of sec 14 commencing at a point 18 rods west from southeast corner of section, north 80 rods, west 736 feet, south 222 feet, east 208 feet south 634 feet east 330 feet south 459 feet east 12 rods to beginning...

Table with 5 columns: Section, and 4 numerical columns. Row 1: Section 14, 13.97, 2.73, .56, 1.00, 18.26

Part of sec 1/4 of sec 14 commencing at a point 1033 feet west from northeast corner of sec 1/4 of sec 14 436 feet east 142 feet south 411 feet west 396 feet north 240 feet west 173 feet north 120 feet west 157 feet north 86 feet, east 225 feet north 210 feet, west 225 feet north to south 1/4 line east to beginning...

Table with 5 columns: Section, and 4 numerical columns. Row 1: Section 14, 95.45, 13.62, 3.82, 1.00, 118.89

Part of sec 1/4 of sec 14 commencing 33 feet south and 233 feet west from northeast corner, south 124 feet, west 102 feet 4 inches north 124 feet, east 102 feet 4 inches to beginning...

Table with 5 columns: Section, and 4 numerical columns. Row 1: Section 22, 37.26, 7.27, 1.49, 1.00, 47.02

Part of sec 1/4 of sec 14 commencing 33 feet south and 451 feet 4 inches west from northeast corner, south 124 feet, west 50 feet, north 124 feet east 50 feet to beginning...

Table with 5 columns: Section, and 4 numerical columns. Row 1: Section 22, 2.41, .47, .10, 1.00, 3.98

Part of sec 1/4 of sec 14 commencing 33 feet south and 501 feet 4 inches west from northeast corner south 124 feet, west 50 feet, north 124 feet, east 50 feet to beginning...

Table with 5 columns: Section, and 4 numerical columns. Row 1: Section 22, 2.41, .47, .10, 1.00, 3.98

Part of sec 1/4 of sec 14 commencing 33 feet south and 601 feet 4 inches west from northeast corner, south 124 feet, west 50 feet, north 124 feet, east 50 feet to beginning...

Table with 5 columns: Section, and 4 numerical columns. Row 1: Section 22, 2.41, .47, .10, 1.00, 3.98

Part of sec 1/4 of sec 14 commencing 22 rods south and 12 rods west from northeast corner south 16 rods, west 23 rods north 20 rods east 13 rods south 4 rods east 10 rods to beginning...

Table with 5 columns: Section, and 4 numerical columns. Row 1: Section 22, 2.41, .47, .10, 1.00, 3.98

Part of Lot 2 commencing at the intersection of the east 1/2 line of section with the north line of Charlevoix and E. Jordan Roads southeasterly along south line of said road 172 feet southwesterly at right angles with said road to east 1/2 line northerly along said 1/2 line to beginning...

Table with 5 columns: Section, and 4 numerical columns. Row 1: Section 22, 20.45, 3.99, .82, 1.00, 26.26

Part of sec 1/4 of sec 14 commencing 86 feet south from southeast corner Lot 1 Block E. S. G. Isaman's Addition south 95 feet west to D. & C. R. R. right of way northwesterly along said right of way to a point due west of beginning, east to beginning...

Table with 5 columns: Section, and 4 numerical columns. Row 1: Section 23, 30.69, 5.96, 1.23, 1.00, 38.90

CITY OF EAST JORDAN, TOWNSHIP 32 NORTH OF RANGE 1 WEST

Part of sec 1/4 of sec 7 commencing 307 feet south from southeast corner of Lot 1 Block D. S. G. Isaman's Addition south to D. & C. R. R. right of way, northwesterly along said right of way to point due west of beginning, east to beginning...

Table with 5 columns: Section, and 4 numerical columns. Row 1: Section 23, 17.05, 3.33, .68, 1.00, 22.06

Part of sec 1/4 of sec 7 commencing at a point 16 feet west from northwest corner of Lot 9 Block D. S. G. Isaman's Addition, west 124 feet, south 150 feet, east 124 feet, north 150 feet to beginning...

Table with 5 columns: Section, and 4 numerical columns. Row 1: Section 23, 6.90, 1.36, .26, 1.00, 9.63

Part of sec 1/4 of sec 7 commencing 16 feet west from northwest corner of Lot 3 Block D. S. G. Isaman's Addition west 124 feet, south 150 feet east 124 feet, north 150 feet to beginning...

Table with 5 columns: Section, and 4 numerical columns. Row 1: Section 23, 6.90, 1.36, .26, 1.00, 9.63

Part of Lot 3 commencing on south line of Mill Street 80 feet from southeast corner Lot 12 Block 6 Village of South Lake south 80 feet, west 80 feet, north 80 feet, east 80 feet to beginning...

Table with 5 columns: Section, and 4 numerical columns. Row 1: Section 23, 46.91, 7.98, 1.64, 1.00, 51.53

Part of Lot 3 commencing on south line of Mill Street where a continuation south of east line of the Alley in Block 6 Village of South Lake intersects the south line of Mill Street, east along south line of Mill Street 78 1/2 feet south 136 feet, west 78 1/2 feet north 136 feet to beginning...

Table with 5 columns: Section, and 4 numerical columns. Row 1: Section 23, 61.36, 11.97, 2.45, 1.00, 76.78

Part of Lot 3 commencing on south line of Mill Street 66 feet south from southeast corner of Lot 1 Block 2 Village of South Lake, south 40 feet west 48 feet, north 40 feet east 48 feet to beginning...

Table with 5 columns: Section, and 4 numerical columns. Row 1: Section 23, 54.54, 10.64, 2.18, 1.00, 68.36

Part of Lot 4 commencing at a point 33 feet west and 25 feet north from southeast corner of section north 60 feet west 120 feet, south 60 feet, east 120 feet to beginning...

Table with 5 columns: Section, and 4 numerical columns. Row 1: Section 23, 17.05, 3.33, .68, 1.00, 22.06

Commencing at northeast corner of Gov't Lot 4 section 23 thence south along the section line 1235 feet, west 153 feet south 85 feet to south line of section 23 west along south line of said section to E. J. & S. R. R. right of way, northwesterly along said right of way to a point 30 rods due south from south 1/4 line of said section, east 11 1/2 rods, north 240 feet east 210 feet north 135 feet east 55 feet north 153 feet to the south 1/4 line Section 23 east to place of beginning excepting therefrom a parcel of land commencing 41 1/2 feet west and 331 feet south from northeast corner Gov't Lot 4 Section 23, west 128 feet south 207 1/2 feet east 128 feet north 207 1/2 feet to beginning also a part of Gov't Lot 4 Section 23 commencing at the southwest corner of sec 1/4 of sec 7 thence east to west line of E. J. & S. R. R. right of way northwesterly along westerly line of said right of way to a point where said line intersects the west line of 4th Street as extended south thence due south along said extended line of 4th Street to a point 20 rods south from south 1/4 line of section 23 west to the shore line of So. Arm of Pine Lake southerly along the meander line of said lake to the east 1/2 line of section 23 south to place of beginning, Part of Gov't Lot 4

Table with 5 columns: Section, and 4 numerical columns. Row 1: Section 24, 19.50, 3.81, .78, 1.00, 25.09

Part of sec 1/4 of sec 7 commencing at a point 90 feet north of intersection of a line drawn east in continuation of north line of Ash Street with east line of Elm Street Bowen's Addition east 120 feet, south 180 feet, west 120 feet, north 180 feet to beginning...

Table with 5 columns: Section, and 4 numerical columns. Row 1: Section 24, 34.09, 6.65, 1.36, 1.00, 43.10

Part of sec 1/4 of sec 7 commencing at a point 90 feet north from intersection of a continuation east of north line of Ash street with east line of Elm Street Bowen's Addition, north 60 feet east 120 feet south 60 feet west 120 feet to beginning...

Table with 5 columns: Section, and 4 numerical columns. Row 1: Section 24, 3.42, .67, .14, 1.00, 5.23

Part of sec 1/4 of sec 7 commencing at northwest corner, south 60 feet east 120 feet, north 60 feet, west 120 feet to beginning...

Table with 5 columns: Section, and 4 numerical columns. Row 1: Section 24, 7.23, 1.41, .29, 1.00, 9.99

Part of sec 1/4 of sec 7 commencing 12 rods east from northwest corner south 40 rods, east 16 rods, north 40 rods, west 16 rods to beginning...

Table with 5 columns: Section, and 4 numerical columns. Row 1: Section 24, 27.27, 5.32, 1.09, 1.00, 34.68

Part of sec 1/4 of sec 7 commencing 483 feet west and 30 feet north from north 1/4 post on east line of section, west 44 1/4 feet, north 120 feet, east 44 1/4 feet, south 120 feet to beginning...

Table with 5 columns: Section, and 4 numerical columns. Row 1: Section 26, 34.09, 6.64, 1.36, 1.00, 43.09

That part of sec 1/4 of sec 7 lying east of the center of Jordan River...

Table with 5 columns: Section, and 4 numerical columns. Row 1: Section 26, 54.54, 10.64, 2.18, 1.00, 68.36

Part of sec 1/4 of sec 7 commencing at 1/2 post on east line of section west 20 rods, north 10 rods, east 20 rods, south 10 rods to beginning...

Table with 5 columns: Section, and 4 numerical columns. Row 1: Section 27, 3.42, .67, .14, 1.00, 5.23

Part of sec 1/4 of sec 7 commencing at the north 1/4 post on east line of section, west 20 rods, south 16 rods, east 20 rods, north 16 rods to beginning...

Table with 5 columns: Section, and 4 numerical columns. Row 1: Section 27, 10.24, 2.00, .41, 1.00, 13.65

Bowens Addition to the Village of South Lake

Table with 5 columns: Block, and 4 numerical columns. Rows include Lots 8 and 9, Lot 1

Bush's Addition to the Village of South Arm

Table with 5 columns: Block, and 4 numerical columns. Rows include Lots 1 and 2, Lot 15, Lot 16, Lots 17, 18 and 19

Empey's Addition to the Village of South Lake

Table with 5 columns: Block, and 4 numerical columns. Rows include Lot 18, Lot 19, Lots 39 and 40, Lot 41

S. G. Isaman's Addition to the Village of South Arm

Table with 5 columns: Block, and 4 numerical columns. Rows include Lot 1, North 1/2 of Lot 11

Martin and Keats' Addition to South Arm

Table with 5 columns: Block, and 4 numerical columns. Rows include Lot 1, Lot 5

Nettleton's Addition to Village of South Arm

Table with 5 columns: Block, and 4 numerical columns. Rows include Lots 1 and 2, Lots 7, 8, 15 and 16, Lots 7, 8, 15 and 16, Lot 1 and west 31 feet of lot 8

Nicholl's 1st Addition (to Village of South Lake)

Table with 5 columns: Block, and 4 numerical columns. Rows include Lot 11 except south 15 feet, west 1/2 of lot 7, east 1/2 of lot 6, Lot 7 and north 10 feet of lot 8

Nicholl's Second Addition to the Village of South Lake

Table with 5 columns: Block, and 4 numerical columns. Rows include Commencing 104 1/2 feet west from southeast corner Lot 1 Block 13 north 60 feet west 31 1/2 feet, south 60 feet, east 31 1/2 feet to beginning also commencing 56 feet west from southeast corner of Lot 1 Block 13, north 60 feet, west 48 1/2 feet south 60 feet, east 48 1/2 feet to beginning (The Plant)

All that part of Lot 6 lying west from a line drawn parallel with and 15 feet west from center of E. J. & S. R. R. right of way

Table with 5 columns: Block, and 4 numerical columns. Rows include Lot 7, Lot 8, Lot 4, Lot 1, Lot 1

Nicholl's Third Addition to the Village of South Lake

Table with 5 columns: Block, and 4 numerical columns. Rows include Lot 3, Lots 6 and 7

CITY OF EAST JORDAN, Nicholl's Third Addition to the Village of South Lake

West 30 feet of Lot 7 and entire Lot 14

Table with 5 columns: Block, and 4 numerical columns. Row 1: Block 23, 158.51, 30.58, 6.27, 1.00, 194.66

Lot 12

Table with 5 columns: Block, and 4 numerical columns. Row 1: Block 24, 54.00, 10.53, 2.16, 1.00, 67.69

Lot 7

Table with 5 columns: Block, and 4 numerical columns. Row 1: Block 25, 49.83, 9.54, 1.89, 1.00, 62.96

Village of South Arm

Table with 5 columns: Block, and 4 numerical columns. Rows include Lot 4, Lot 1, Lot 2

Part of Lot 7 commencing at a point on the west line of Water Street 120 feet in a northwesterly direction from where the west line of Water Street intersects the north line of John Street thence southwesterly along Water Street 25 feet, southwesterly 90 feet parallel with John Street northwesterly 25 feet parallel with Water Street northeasterly 90 feet to beginning...

Table with 5 columns: Block, and 4 numerical columns. Rows include South 1/2 of Lot 3, Lot 8

Village of South Lake

Part of Lot 1 and 2 commencing at southwest corner Lot 1, north 80 feet, east 30 feet, south 20 feet, east 15 feet, south 60 feet, west 45 feet to beginning...

Table with 5 columns: Block, and 4 numerical columns. Rows include Lot 1, Lot 12

Part of Lot 12 commencing 27 feet west from southeast corner, north 60 feet, west 22 feet, south 60 feet east 22 feet to beginning...

Table with 5 columns: Block, and 4 numerical columns. Rows include Lots 1 and 2 except west 70 feet, North 16 feet of Lot 4 and entire Lot 5 except north 31 feet

Stone's Addition (to Village of South Lake)

Table with 5 columns: Block, and 4 numerical columns. Rows include Lots 7, 8, 9 and 10, Lot 3 and 4, East 1/2 of Lots 5 and 6, Lots 11 and 12, Lot 1

Stone's Second Addition to the Village of South Lake

Table with 5 columns: Block, and 4 numerical columns. Rows include East 1/2 of Lots 7 and 8 and entire Lots 9, 10, 11 and 12

John R. Vance's Addition to the Village of South Arm

Table with 5 columns: Block, and 4 numerical columns. Rows include Lot 6, Lots 9 and 10, Lots 9, 10 and 11

VILLAGE OF ADVANCE

Table with 5 columns: Block, and 4 numerical columns. Row 1: Block A, 5.71, 1.12, .23, 1.00, 8.06

VILLAGE OF BOYNE FALLS

Table with 5 columns: Block, and 4 numerical columns. Rows include Lot 3 and south 10 feet of Lot 4, Lot 8, Lots 9 and 10, Lot 6, Lots 1 and 2, Lots 7 and 8, East 70 feet of Lot 8

Unplatted Property

Commencing on the south side of Mill street south 75 degrees 40 minutes east 61 chains and south 14 degrees 20 minutes west 40 feet from initial point of Boyne Falls Village Plat, thence south 75 degrees 40 minutes east 5 25-100 chains along the south margin of Mill street to a stake in fence, south 57 degrees east along fence 29 1/2 links to the east boundary of Cedar street, south 46 1/2 degrees east 158 chains to the southwest corner of A. Moschinski's 12 acres, south 21 degrees east 1 29-100 chains to Maple tree 12 seconds, south 24 degrees west 6 26-100 chains to a stake, north 67 1/2 degrees west 71 links to corner of tight board fence, south 14 1/2 degrees west 4 66-100 chains down hill to stake in brook (sugar tree in brook bears north 66 degrees west 13 1/2 links) north 75 degrees 30 minutes west 4 23-100 chains to David Thompson's southeast corner, north 14 1/2 degrees east 4 74-100 chains to Meyer's northeast corner, north 59 1/2 degrees west 1 8-100 chains to a stake, north 70 1/2 degrees west 1 16-100 chains to east side of Grove street, north 14 1/2 degrees east 4 62-100 chains to beginning containing 9 1/2 acres except description belonging to F. P. Robbins described as follows a piece of land on southeast corner of Grove and Mill streets, east 100 feet, south 50 feet, west 100 feet, north 50 feet to beginning

Table with 5 columns: Section, and 4 numerical columns. Row 1: Section 23, 37.82, 7.38, 1.51, 1.00, 47.71

TOWNSHIP 32 NORTH OF RANGE 5 WEST

Commencing on section line of 15 and 16 at a stake 1 70-100 chains south 1/2 of 1/4 post on south of Mill street, south 50 feet, east 133 feet, north 50 feet, west to beginning

Table with 5 columns: Section, and 4 numerical columns. Row 1: Section 15, 15.13, 2.96, .61, 1.00, 19.70

Addition No. 1

Table with 5 columns: Block, and 4 numerical columns. Rows include north 1/2 of lot 5, Lots 11 and 12

Addition No. 2

Table with 5 columns: Block, and 4 numerical columns. Rows include Lots 1 and 2, Lots 1 and 2, Lots 9 and 10

Gager's Addition

Table with 5 columns: Block, and 4 numerical columns. Row 1: Block 1, 7.57, 1.48, .30, 1.00, 10.35

VILLAGE OF CLARION

Table with 5 columns: Block, and 4 numerical columns. Rows include south 1/2 of east 1/2 of lot 4, west 1/2 of lot 4, east 190 feet of lot 22

Lot 23 except commencing at northwest corner of lot thence south on west line of lot 3 1/2 rods, east 11 3-7 rods, north 3 1/2 rods, west on north line of lot 11 3-7 rods to beginning

Table with 5 columns: Block, and 4 numerical columns. Rows include Lot 24, Lot 38, Lots 42 and 43, Lot 48

VILLAGE OF IRONTON

Table with 5 columns: Block, and 4 numerical columns. Row 1: Block 3, .88, .17, .04, 1.00, 2.09

VILLAGE OF NORWOOD

Table with 5 columns: Block, and 4 numerical columns. Row 1: Block 7, 19.49, 3.81, .78, 1.00, 25.08

BAYSHORE VILLAGE

Table with 5 columns: Block, and 4 numerical columns. Rows include Part of Out lot 3 beginning 33 feet east of west line of sec 1/4 of sec 12, 34-7 on north line of P. M. R. R. right of way thence north to a point 302 feet from right of way, east 136 feet, north 108 5-10 feet, west 136 feet south 108 5-10 feet to beginning

CALEDONIA HEIGHTS

Block	Acres	Value	Assess	Prop	Prop	Prop
Part of Lot 3 commencing at northwest corner, thence southeast 25 rods, southwest 2 rods northwest 25 rods, northeast 3 rods to beginning, .50	3.50	.68	.13	1.00		4.93

GLENWOOD BEACH RESORT.

Lot 2.....	2.72	.53	.11	1.00		4.36
Lot 3.....	2.72	.53	.11	1.00		4.36
Lot 4.....	2.72	.53	.11	1.00		4.36
Lot 5 except east 50 feet.....	5.45	1.07	.22	1.00		7.74
Lot 6.....	2.72	.53	.11	1.00		4.36
Lot 7.....	2.72	.53	.11	1.00		4.36
Lot 8.....	2.72	.53	.11	1.00		4.36
Lot 9.....	2.72	.53	.11	1.00		4.36
Lot 10.....	2.72	.53	.11	1.00		4.36
Lot 12.....	2.72	.53	.11	1.00		4.36
Lot 15.....	2.72	.53	.11	1.00		4.36
Lot 16.....	2.72	.53	.11	1.00		4.36
Lot 17.....	2.72	.53	.11	1.00		4.36
Lot 18.....	2.72	.53	.11	1.00		4.36
Lot 19.....	2.72	.53	.11	1.00		4.36
Lot 20.....	2.72	.53	.11	1.00		4.36
Lot 21.....	2.72	.53	.11	1.00		4.36
Lot 22.....	2.72	.53	.11	1.00		4.36
Lot 23.....	2.72	.53	.11	1.00		4.36
Lot 24.....	2.47	.48	.10	1.00		4.05
Lot 62.....	2.18	.43	.09	1.00		3.70
Lot 63.....	2.18	.43	.09	1.00		3.70

HEINEMANN'S ADDITION TO IRONTON.

Lot 16.....	.88	.17	.04	1.00		2.09
-------------	-----	-----	-----	------	--	------

LEE AND MONTAGUE'S ADDITION TO VILLAGE OF TALCOTT.

Lot 3.....	24.11	4.70	.96	1.00		30.77
Lot 25.....	1.73	.34	.07	1.00		3.14

I. B. McLEAN'S PLAT OF HOLY ISLAND

Lot 13.....	.94	.18	.04	1.00		2.16
Lot 17.....	.94	.18	.04	1.00		2.16
Lot 19.....	.94	.18	.04	1.00		2.16

MOUNT Mc SAUBA.

Block	Acres	Value	Assess	Prop	Prop	Prop
Lot 11.....	.69	.13	.03	1.00		1.85
Lot 9.....	.69	.13	.03	1.00		1.85
Lot 10.....	.69	.13	.03	1.00		1.85
Lot 12.....	.69	.13	.03	1.00		1.85
Lot 13 and 14.....	1.38	.27	.06	1.00		2.71
Lot 3.....	.69	.13	.03	1.00		1.85
Lot 11, 12 and 13.....	8.17	1.69	.33	1.00		11.09
Lot 17.....	.69	.13	.03	1.00		1.85
Lot 1.....	.69	.13	.03	1.00		1.85
Lot 2.....	.69	.13	.03	1.00		1.85
Lot 11.....	.69	.13	.03	1.00		1.85
Lot 4.....	.69	.13	.03	1.00		1.85

NORTH CHARLEVOIX.

Lot 1.....	1.28	.25	.06	1.00		2.58
Lot 2.....	1.28	.25	.06	1.00		2.58
Lot 3.....	1.28	.25	.06	1.00		2.58
Lot 5.....	1.28	.25	.06	1.00		2.58
Lot 6.....	1.28	.25	.06	1.00		2.58
Lot 7.....	1.28	.25	.06	1.00		2.58
Lot 8.....	1.28	.25	.06	1.00		2.58
Lot 9.....	1.28	.25	.06	1.00		2.58
Lot 10.....	1.28	.25	.06	1.00		2.58
Lot 11.....	1.28	.25	.06	1.00		2.58
Lot 18.....	1.28	.25	.06	1.00		2.58
Lot 19.....	1.28	.25	.06	1.00		2.58
Lot 20.....	1.28	.25	.06	1.00		2.58
Lot 22.....	1.28	.25	.06	1.00		2.58
Lot 23.....	1.28	.25	.06	1.00		2.58
Lot 24.....	1.28	.25	.06	1.00		2.58
Lot 25.....	1.28	.25	.06	1.00		2.58
Lot 26.....	1.28	.25	.06	1.00		2.58
Lot 27.....	1.28	.25	.06	1.00		2.58
Lot 28.....	1.28	.25	.06	1.00		2.58
Lot 29.....	1.28	.25	.06	1.00		2.58
Lot 30.....	1.28	.25	.06	1.00		2.58
Lot 31.....	1.28	.25	.06	1.00		2.58
Lot 32.....	1.28	.25	.06	1.00		2.58
Lot 33.....	1.28	.25	.06	1.00		2.58
Lot 34.....	1.28	.25	.06	1.00		2.58
Lot 35.....	1.28	.25	.06	1.00		2.58
Lot 36.....	1.28	.25	.06	1.00		2.58
Lot 37.....	1.28	.25	.06	1.00		2.58
Lot 38.....	1.28	.25	.06	1.00		2.58
Lot 39.....	1.28	.25	.06	1.00		2.58
Lot 41.....	1.28	.25	.06	1.00		2.58
Lot 42.....	9.61	1.88	.38	1.00		12.87
Lot 44.....	1.28	.25	.06	1.00		2.58
Lot 46.....	1.28	.25	.06	1.00		2.58
Lot 47.....	1.28	.25	.06	1.00		2.58
Lot 49.....	1.28	.25	.06	1.00		2.58

PINE POINT.

Entire except Lots 13 and 14.....	9.61	1.88	.38	1.00		12.87
Lot 13.....	1.28	.25	.06	1.00		2.58
Lot 14.....	1.28	.25	.06	1.00		2.58
Entire except Lot 5.....	12.83	2.50	.51	1.00		16.84
Lots 3, 4, 8, 9, 10, 12, 15, 16, 20 and 21.....	6.41	1.25	.26	1.00		8.92
Lot 7.....	1.28	.25	.06	1.00		2.58
Lots 13 and 14.....	2.58	.50	.10	1.00		4.18
Lots 17 and 19.....	2.58	.50	.10	1.00		4.18
Entire except Lots 7 and 8.....	11.55	2.26	.46	1.00		15.27
Entire.....	9.61	1.88	.38	1.00		12.87
Entire except Lot 5.....	9.61	1.88	.38	1.00		12.87
Lot 5.....	1.28	.25	.06	1.00		2.58
Entire except Lot 5.....	11.95	2.34	.48	1.00		15.77
Entire.....	9.61	1.88	.38	1.00		12.87
Entire.....	6.77	1.32	.27	1.00		9.36
Entire except Lot 15.....	11.17	2.18	.45	1.00		14.80
Entire.....	1.50	.30	.06	1.00		2.86

WALLOON HEIGHTS.

West 1/2 of Lot 17 and entire Lot 18.....	13.18	2.58	.53	1.00		17.29
Lot 19.....	8.50	1.66	.34	1.00		11.50
Lot 25.....	8.50	1.66	.34	1.00		11.50
Lot 26.....	7.79	1.52	.31	1.00		10.62
Lot 27.....	4.94	.96	.20	1.00		7.10
Lot 28.....	7.79	1.52	.31	1.00		10.62
Lot 37.....	7.81	1.53	.31	1.00		10.65
Lot 38.....	7.77	1.52	.31	1.00		10.60
Lot 41.....	4.94	.96	.20	1.00		7.10
Lots 43 and 44.....	11.51	2.26	.46	1.00		15.22
Lots 45, 46 and 47.....	17.42	3.40	.70	1.00		22.52
Lot 50.....	5.99	1.17	.24	1.00		8.40
Lot 53.....	2.48	.48	.10	1.00		4.06
Lots 55 and 57.....	4.94	.96	.20	1.00		7.10
Lots 58 and 59.....	7.08	1.39	.28	1.00		9.75
Lot 65.....	3.50	.69	.14	1.00		5.33
Lot 66.....	2.48	.48	.10	1.00		4.06
Lot 67.....	3.66	.72	.15	1.00		5.53

WATSONS ADDITION TO VILLAGE OF TALCOTT

Lot 63.....	1.73	.34	.07	1.00		3.14
Lot 98.....	3.44	.68	.14	1.00		5.26
Lot 25.....	12.27	2.39	.49	1.00		16.15
Lot 26.....	49.44	9.65	1.98	1.00		62.07

ZENITH HEIGHTS

Lot 7.....	1.81	.36	.07	1.00		3.24
Lots 12 and 13.....	3.63	.71	.14	1.00		5.48
Lot 22.....	1.82	.36	.07	1.00		3.25
Lot 27.....	1.81	.36	.07	1.00		3.24
Lots 34 and 35.....	2.19	.43	.09	1.00		3.71
Lots 67 and 68.....	1.85	.37	.07	1.00		3.29
Lot 73.....	1.46	.29	.06	1.00		2.80
Lot 76.....	1.46	.29	.06	1.00		2.81
Lot 80.....	1.46	.29	.06	1.00		2.81
Lot 81.....	1.45	.29	.06	1.00		2.80
Lots 82 and 83.....	2.92	.57	.12	1.00		4.62
Lots 86 and 87.....	2.93	.57	.12	1.00		4.62
Lots 91 and 92.....	2.96	.58	.12	1.00		4.65
Lots 95 and 96.....	1.47	.29	.06	1.00		2.82
Lots 97 and 98.....	2.56	.50	.10	1.00		4.16
Lot 99.....	1.47	.29	.06	1.00		2.86
Lots 100, 101, 102, 103, 104, 105, 106, 107 and 108.....	5.65	1.11	.23	1.00		7.99
Lot 109.....	.74	.14	.03	1.00		1.91
Lot 110.....	.74	.14	.03	1.00		1.91
Lots 111, 112, 113, 114 and 115.....	2.87	.56	.11	1.00		4.54

MORTGAGE FORECLOSURES

Default having been made in the conditions of a certain mortgage made and executed by Frank Kizer and wife Nina Kizer, jointly, both of the township of Charlevoix, County of Charlevoix, State of Michigan, to the State Bank of East Jordan, a corporation organized, existing and doing business under and by virtue of the laws of the State of Michigan and having its principal office in the City of East Jordan, Michigan, which said mortgage bears date the 24th day of October, 1914 and was recorded on the 25th day of October, 1914 in Liber 47 of Mortgages, on page 567 in the office of the Register of Deeds in and for the County of Charlevoix, Michigan.

By reason of said default there is now claimed to be due and is due upon said mortgage at the date of this notice, including principal, interest, taxes and attorney fee, the sum of Ten Hundred Fifty-six and 71/100 (\$1056.71) Dollars, and that no suit or proceedings at law or in equity have been instituted to recover the debt secured by said mortgage or any part thereof.

Now, therefore, notice is hereby given that by virtue of the power of sale in said mortgage contained and of the statute of the State of Michigan in such case made and provided, the undersigned will sell at public auction for cash to the highest bidder on the 10th day of March A. D. 1924 at 10:00 o'clock in the forenoon of said day at the front door of the Court House in the City of Charlevoix, County of Charlevoix, State of Michigan, that being the building wherein the Circuit Court for the County of Charlevoix is held.

The premises described in said mortgage are as follows, to-wit: "The Northwest Quarter (NW 1/4) of the Northwest Quarter (NW 1/4) of Section Twenty-seven (27), Township Thirty-two (32) North, Range Seven (7) West, containing Forty (40) acres of land more or less, according to the United States Survey thereof," together with the hereditaments and appurtenances thereunto belonging or so much thereof as may be necessary to satisfy the debt, cost and taxes aforesaid.

STATE BANK OF EAST JORDAN, Mortgagee.
By A. J. SUFFERN, Its Cashier.

Dated East Jordan, Michigan, Dec. 14th, 1923.

CLINK & WILLIAMS
Attorneys for Mortgagee.
Business Address, East Jordan, Mich.

MORTGAGE SALE

Default having been made in the conditions of a certain mortgage made, and executed by Henry Toonder, a widower of the Township of South Arm, County of Charlevoix and State of Michigan to the State Bank of East Jordan, a corporation organized, existing and doing business under and by virtue of the laws of the State of Michigan, and having its principal office in the City of East Jordan, Michigan, which said mortgage bears date the 17th day of November, 1919 and was recorded on the 25th day of Nov. 1919 in Liber 59 of Mortgages on page 89 in the office of the Register of Deeds in and for the County of Charlevoix, Michigan. By reason of said default there is now claimed to be due and is due upon said mortgage at the date of this notice, including principal, interest, taxes and attorney fee, the sum of Four Hundred Eighty-four and 85/100 (\$484.85) Dollars, and that no suit or proceedings at law or in equity have been instituted to recover the debt secured by said mortgage, or any part thereof.

Now, therefore, notice is hereby given that by virtue of the power of sale in said mortgage contained and of the statute of the State of Michigan in such case made and provided, the undersigned will sell at public auction for cash to the highest bidder, on Wednesday, the 20th day of February A. D. 1924 at 10:00 o'clock in the forenoon of said day, at the front door of the Court House in the City of Charlevoix, County of Charlevoix and State of Michigan, that being the building wherein the Circuit Court for the County of Charlevoix is held.

The premises described in said mortgage are as follows, to-wit: "The Northwest Quarter (NW 1/4) of the Southeast Quarter (SE 1/4) of Section 33, Township 32 North, Range 7 West."

Together with the hereditaments and appurtenances thereunto belonging, or so much thereof as may be necessary to satisfy the debt, cost and taxes aforesaid.

STATE BANK OF EAST JORDAN, Mortgagee.
By A. J. SUFFERN, Its Cashier.

Dated East Jordan, Michigan, November 16, 1923.

CLINK & WILLIAMS
Attorneys for Mortgagee.
Business Address: East Jordan, Mich.

PROBATE ORDER

STATE OF MICHIGAN, The Probate Court for the County of Charlevoix.

At a session of said Court, held at the Probate Office in the City of Charlevoix, in said County, on the 8th day of January A. D. 1924.

Present: Hon. Servetus A. Correll, Judge of Probate.

In the Matter of the Estate of Joseph Maddock, Deceased.

Rolland P. Maddock having filed his petition, praying that an instrument filed in said Court be admitted to Probate as the last will and testament of said deceased and that administration of said estate be granted to petitioner or some other suitable person.

It is ordered, that the 30th day of January A. D. 1924, at ten A. M., at said Probate Office, is hereby appointed for hearing said petition.

It is Further Ordered, That Public notice thereof be given by publication of a copy hereof for three successive weeks previous to said day of hearing, in the Charlevoix County Herald, a newspaper printed and circulated in said county.

SERVETUS A. CORRELL,
Judge of Probate.

Ruth Dwyer



Among the talented and beautiful younger players on the screen is Ruth Dwyer, featured player in numerous specials. It may sound like a paradox, but in order to "break into the movies" Miss Dwyer had first to break out of them. She was born in Brooklyn not far from a studio, tried her luck with that company and got only "bits." Posing proved a short cut to leads in pictures.

Has Anyone Laughed At You Because—

By ETHEL R. PEYSER

CHARLEVOIX CO. HERALD
G. A. Lisk, Publisher
Subscription Rate, \$1.50 per year.
Entered at the postoffice at East Jordan Michigan, as second class mail matter.

PENINSULAR
(Edited by Mrs. E. Hayden)

Our Faithful Pat made his regular route Saturday the first time since Wednesday but he managed so we got our mail every day.

Glenn Lane of Grand Rapids who visited the F. H. Wangeman family for some time went to Boyne City the middle of last week to visit his uncles, the Messers Sandie for a few days before returning to his position in Grand Rapids.

Nurse Eva Beers, who has been visiting her parents, Mr. and Mrs. A. J. Beers and sister, Mrs. F. H. Wangeman for some time expects to go to Grand Rapids Wednesday to resume her profession.

Lyle Wangeman expects to go to Grand Rapids, Wednesday, to spend the rest of the winter.

Mr. and Mrs. F. D. Russell and family of Ridgeway Farms went Monday to spend the day with Mr. and Mrs. Mose LaLonde in Chadock District because Mrs. LaLonde was ill.

Miss Mable Zoulek, teacher in Star District spent the week end with Miss Mildred Wangeman in Three Bells District.

Geo. Wurn and friend Mrs. White and daughter June returned to Detroit Wednesday, after visiting his parents, Mr. and Mrs. Fred Wurn in Star District for two weeks.

Mrs. A. Patch of Lees Ash, Buckner Hill South Side is able to be out after a weeks illness with a severe cold.

Fred Wurn is able to be out again after having severe attack of stiff neck an ailment which has attacked a good many lately.

The County Road has been snow plowed and is in fine shape.

Al Bacon and Bill Rolston are hauling the logs from their job on section 23 which they cut and skidded in the fall. They haul them by team across the Harlow Sweet place and strike the County road there and go to Boyne City. They make one trip a day. The first growth of timber on that piece of land which was part of the Richard Lake holding was the first timber to be shipped from the Peninsula. That in 1880 was shipped by boom to the Cheboygan-Hoop Co.

The Cross Country road is again in fair shape after being in bad shape most of last week they were opened up Saturday.

Mr. and Mrs. J. W. Hayden of Orchard Hill received a letter Jan. 14, dated Dec. 5, Bhadravati, India, from their son Cash A. Howden stating he was on the job again after being confined in a hospital one week in Bangalore with a slight attack of appendicitis also he liked his job very well but the U. S. A. would look pretty good.

A letter recently received by A. B. Nicloy from his mother, Mrs. Clara Nicloy, who is with her daughter Mrs. Hazel Rout at Shepherd, Mich. states she is well and enjoying her self very much.

A fine 8 pound girl arrived at the home of Mr. and Mrs. Geo. Staley, January 15. Dr. Ramsey of East Jordan, and Mrs. W. D. McDonald officiated.

Nurse Viva Follette of Jones District, East of Boyne City came January 16th,

in care for her sister Mrs. Geo. Staley and the little Miss Staley.

Fred Wurn is rolling the Township road.

Clara Bogart returned to his home in Boyne City, Saturday, after spending three weeks with his Grandparents Mr. and Mrs. Joel Bennett, recuperating from the measles.

Afton School Notes.

Friday finishes another month, the following monthly average for the pupils were:—Percy Batterbee 81 per cent; Frank Bryzik 86; Helen Hardy 80; Sophia Guzniczak 83; Fae Martin 86; Vincent Guzniczak 87; Alice Nowland 86; Lila Batterbee 86; Ruby Hardy 84; Mary Guzniczak 77; Julius Guzniczak 75; George Nowland 89; Fred Martin 86; John Martin 91; Virginia Martin 88; John Guzniczak 88; Devere Scott 85; Billie Guzniczak 89; Christabel Sutton 93; Margaret Martin 91.

The following pupils were neither absent nor tardy:—Billie, Julius, Vincent and Mary Guzniczak; Lila Batterbee; Alice Nowland; Frank Bryzik.

Hot lunches will be served to the pupils each noon. Our menu for the next week is:—

Monday—Mashed potatoes.
Tuesday—Bean Soup.
Wednesday—Cocoa.
Thursday—Baked Beans.
Friday—Creamed potatoes.
Two pupils take their turns at cooking each day.

All parents are requested to visit school next month. The following visited last month:—Mr. J. Sutton, Let's see more out.

POSSE CAPTURES SIX OUTLAWS

Slayer of Florida Deputy, Wounded, Taken When Ammunition is Gone.

West Palm Beach, Fla.—Six more members of the Ashley-Mobley band of outlaws have been captured by officers, including Albert Miller, who shot and killed Deputy Sheriff Fred Baker near here.

Miller was captured without a struggle in a house located in the dense swamps. He was suffering from a broken left arm and left hip, both shattered by bullets.

Possemen declared that only the fact that Miller's ammunition was exhausted prevented him from fighting.

Possemen also brought here today George Marlot and his wife, a daughter of Joe Ashley, A. D. Blanchard and P. N. Jenkins, a partner of Miller. Ten men and women and two infants are now being held here.

Aviation Beacon is Powerful.

Mitchell Field, N. Y.—A new light, termed by Maj. William N. Sensley, Jr., commander of the Army aviation station, as the greatest single achievement in furtherance of night flying, was demonstrated. The beacon, manufactured by a Paris company, diffuses a volume of light over a distance of a mile square instead of emitting it in the form of a beam, as a searchlight does. It has a radius of 180 degrees. Under its rays, two flights were made.

Peoples' Wants

MUNNIMAKERS

Notices of Lost, Wanted, For Sale, For Rent, etc., in this Column is 25 cents for one insertion for 25 words or less. Initials count as one word and compound words count as two words. Above this number of words a charge of one cent a word will be made for the first insertion and one-half cent for subsequent insertions, with a minimum charge of 15 cents.

Lost and Found

LOST—Male Beagle Hound, six months old, in color a mixture of white, black and brown. Wore collar with 1923 license. Strayed Sunday, Jan'y 6th. Reward. LEO LALONDE. 3x

Wanted

WANTED—Four Foot Fuel Wood delivered to yards.—MICHIGAN IRON & CHEMICAL CO., Phone 38, East Jordan.

SELL your VEAL and CHICKENS to C. J. MALPASS. 22ft

For Sale—Miscellaneous

PAIR OF MEDIUM SLEIGHS FOR SALE—2 1/2-inch runners. FREEMAN WALTON, East Jordan. 3-2

FOR SALE—HAY! HAY! HAY! Baled—\$17.00 a ton, Cash; at barn. J. A. NICKLESS. 3ft.

FOR SALE—Dry Buzz Hardwood at \$2.75 per cord.—JOHN A. COOPER, East Jordan, Route 1, phone 252-F3. 1x4

FOR SALE—Large size Baby Cutter. Inquire of MRS. L. C. MONROE. 3-ft

RANGE FOR SALE—A second-hand. Range in fairly good condition. Inquire of A. J. BROOKS, East Jordan. 1x4

TO SWINE BREEDERS.—I have for service a big type Registered O. I. G. Boar, 1 year old.—EDWARD THORSEN, Phone 165F-22, Route 3, East Jordan. 52-ft.

MAPLE SYRUP FOR SALE—By the gallon; delivered anywhere in East Jordan. Phone 167-F13, FRANK LENOSKY. 2-2

Grover Cleveland Said.

"While the people should support the government, the government should not support the people."

Very Likely.

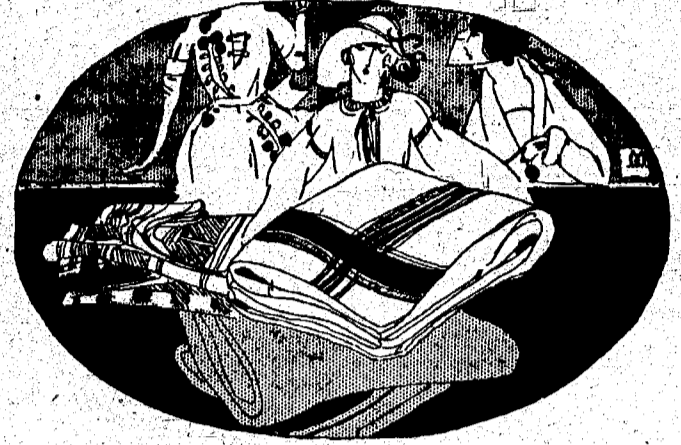
After making up one's mind to be "genial," the first person encountered is likely to be overwhelmed.

HELPED LITTLE GIRL'S COUGH

"My little girl had an awful cough. I got a bottle of FOLEY'S HONEY and TAR COMPOUND and gave her a few doses and she was greatly relieved," writes Clyde H. Benson, Marlbrook, Virginia. The best remedy for coughs, colds and hoarseness. Relieves promptly and effectively.—Hite's Drug Store, adv.

EAST JORDAN LUMBER Co.

Special Bargains
Continued In
Cold Weather Goods



Wool Blankets
(Two-in-One Blankets)

COATS

and Ladies' and Children's
Fleeced-lined
UNDERWEAR.

East Jordan Lumber Co

No Argument Here.

It is as hard to deny one's self an argument as to deny one's self another piece of cake when one wants it.

Are We?

We all remember when we were foolish, and are we sure we have entirely overcome that?

Publicity.

Philosophers have discovered the source of nearly every human desire except of that to attract public attention.

The Word "Canoe." The name canoe is of West Indian origin, the Carib word being "canoa."

Saturday Special's

- Beef Roast.....12c-13c
- Beef Roast (boned).....16c
- Beef Ribs.....9c
- Round Steak.....16c
- Sirloin Steak.....16c
- Frankfurters (no cereals).....15c
- Bologna.....15c
- Liver Sausages.....2 lbs. for 25c
- Hamburg.....2 lbs. for 25c
- Fresh Home-made Sausage.....15c
- Norwood Link Sausage.....22c

Fresh Dressed Chicken all the time.

WEST SIDE Sanitary Market

"Let Us Furnish Your Table"

A little out of the way—but the walk will pay.
Phone 127. We deliver anywhere in the City.

THE RECORD BREAKING SALE!

Which started at the Leader, Saturday, January 12th, has Sold Loads of Merchandise For Us.

BARGAINS! BARGAINS! A Sale such as has never been attempted in this region for years. This Sale will only last for a short period so why not take advantage and buy your immediate and future wants at **SLAUGHTER CUT PRICES!** Sale Now On In Full Progress.

We Forget Our Profits! We Overlook Our Cost! Goods Must Go and Go Quickly! We Challenge Competition! **READ! COMPARE!**

Boys good weight Knicker Winter Pants 79c
Sizes To 16 Years Pair.....

Mens Sheeplined Coats Fur Collars good \$12 \$6.79 values.....

Mens Plain Blue and Striped Steffles denim Overalls Well Made Good Weight \$1.75 Values, Pair..... 98c

Mens Heavy Fleeced Unionsuits \$2 value \$1.19 suit

Mens Extra Heavy All Wool Pants or Jumpers some well known Soo Garments in this Lot. \$6.00 value this Sale. Garment..... \$3.79

Table Oilcloth all colors White included 40c Values Yard..... 23c

Blankets EXTRA LARGE HEAVY COTTON..... 98c

Gloves MENS CANVAS KNITTED WRIST Pair..... 9c

Boys and Girls Fleeced heavy Unionsuits \$1.25 value Garment..... 79c

Mens Wool Flannel Overshirts \$3 value \$1.59

Mens 4-Buckle Artics \$4.00 value \$2.69

Mens Suits in all sizes \$15.00 values \$8.98

Mens Socks Mens good heavy wool socks 45c value. pair.. 23c

THE LEADER

Main Street H. Rosenthal, Prop. East Jordan, Mich.

Ladies Hose Ladies Heavy Wool-Hose 75c value Pair..... 39c

Don't be a Doubting Thomas

In This Paper, Each Issue, Will Appear a Chiropractic Health Talk for a Period of Time

As you read these health talks will you do so with an open mind? Do you realize that another reader will say, "Yes, it must be so, someday I'll investigate," while someone else who is used to making decisions quickly will say, "It sounds good, I'll investigate once," and makes his resolution by doing so without delay.

Let us look to the future two months later. The first individual reads another health talk, he says "Yes, I am becoming more convinced every day. Someday I will really investigate and find out what this Chiropractic can do for me." But the second individual who investigated without delay, today he is well. Living is a joy—work a pleasure. He saw the opportunity and grasped it.

My one big idea behind these health talks is to get sick folks to lay aside all prejudice long enough to THINK for themselves and understand why and how chiropractic does and can remove the cause of sickness.

There is one way for you to satisfy yourself that my claims are not one bit exaggerated, spend a few minutes in my office each day for a period of time and will be thoroughly convinced that I can make good every promise that has to do with the recovery of your health and happiness.

J. W. ELLISON

CHIROPRACTOR
Palmer School Graduate
Over Bennett's Store
OFFICE HOURS:—10:00 to 12:00 a. m., 2:00 to 5:00 p. m., Monday, Wednesday, and Fridays, 7:00 to 9:00 every evening except Sundays.

(Advertisement)

Radical and Conservative.
A radical knows whatever is, is wrong. A conservative may know it, too, but means to enjoy life so far as he may.

Our Vast Country.
This is a vast country. There is always some one at the season's asking that a seagull be identified.

Surely.
The trouble with a card club is that it is always holding meetings when you'd rather do something else.

FOLEY CATHARTIC TABLETS
Get a bottle of FOLEY CATHARTIC TABLETS for constipation. Easy and pleasant to take; prompt and effective in results. "FOLEY CATHARTIC TABLETS have helped me a lot. I was constipated very bad but am fine now," writes Miss Mildred M. Keene, 442 Essex St., Bangor, Maine.—Hite's Drug Store, adv.

Three Men AND a Maid

By P. G. Wodehouse

Illustrations by Irwin Myers

Copyright by George H. Doran Co.

(Continued)

"No, really? Splendid! I can't see you very distinctly—how those Johnnies in the old days ever contrived to put up a scrap with things like this on their heads beats me—but you sound a good sort. I hope you'll be very happy."

"Thank you ever so much, Mr. Marlowe. I'm sure we shall."

"Eustace is one of the best."

"How nice of you to say so."

"All this," interrupted Mrs. Hignett, who had been a chafing auditor of this interchange of courtesies, "is beside the point. Why did you dance in the hall, Samuel, and play the orchestra?"

"Yes," said Mr. Bennett, reminded of his grievance, "waking people up."

"Scaring us all to death!" complained Mr. Mortimer.

"I remember you as a boy, Samuel," said Mrs. Hignett, "lamentably lacking in consideration for others and concentrated only on your selfish pleasures. You seem to have altered very little."

"Don't bullyrag the poor man," said



"Don't Bullyrag the Poor Man," said Jane Hubbard. "Be Human! Lend Him a Can-Opener!"

Jane Hubbard. "Be human! Lend him a can-opener!"

"I shall do nothing of the sort," said Mrs. Hignett. "I never liked him and I dislike him now. He has got himself into this trouble through his own wrong-headedness."

"It's not his fault his head's the wrong size," said Jane.

"He must get himself out as best he can," said Mrs. Hignett.

"Very well," said Sam, with bitter dignity. "Then I will not trespass further on your hospitality, Aunt Adeline. I have no doubt the local blacksmith will be able to get this damned thing off me. I shall go to him now. I will let you have the helmet back by parcel post at the earliest possible opportunity. Good-night!" He walked coldly to the front door. "And there are people," he remarked sardonically, "who say that blood is thicker than water. I'll bet they never had any aunts!"

Episode Five.

Billie, meanwhile, with Bream trotting docilely at her heels, had reached the garage and started the car. Like all cars which have been spending a considerable time in secluded inaction it did not start readily. At each application of Billie's foot on the self-starter, it emitted a thny and reproachful sound and then seemed to go to sleep again. Eventually, however, the engines began to revolve and the machine moved reluctantly out into the drive.

To Whom It May Concern.

I will not be responsible for any Bills contracted by my son, Ivan Harrington in my name.
adv. 33 ED. HARRINGTON.

Good Company.

If a man is good company he is welcome to take up as much time as a bore would and more, too.

ENJOYED A GOOD NIGHT'S SLEEP

"I wish to say that FOLEY PILLS worked O. K. on me in a couple of hours. I took a couple of them, went to bed and had a good night's sleep," writes Con Thiel, 118 E. Columbia St., Fort Wayne, Indiana. FOLEY PILLS are a diuretic stimulant for the kidneys. Hite's Drug Store, adv.

"The battery must be run down," said Billie.

"All right," said Bream.

Billie cast a glance of contempt at him out of the corner of her eyes. She hardly knew why she had spoken to him except that, as all automobilists are aware, the impulse to say rude things about their battery is almost irresistible. To an automobilist the art of conversation consists in rapping out scathing remarks either about the battery or the oiling system.

Billie switched on the headlights and turned the car down the dark drive. She was feeling thoroughly upset. Her idealistic nature had received a painful shock on the discovery of the yellow streak in Bream. To call it a yellow streak was to understate the facts. It was a great belt of saffron encircling his whole soul. That she, Wilhelmina Bennett, who had gone through the world seeking a Galahad, should finish her career as the wife of a man who hid under beds simply because people shot at him with elephant-guns was abhorrent to her. Why, Samuel Marlowe would have perished rather than do such a thing. You might say what you liked about Samuel Marlowe—and, of course, his habit of playing practical jokes put him beyond the pale—but nobody could question his courage. Look at the way he had dived overboard that time in the harbor at New York! Billie found herself thinking hard about Samuel Marlowe.

There are only a few makes of car in which you can think hard about anything except the actual driving without stalling the engines, and Mr. Bennett's Twin-Six-Complex was not one of them. It stopped as if it had been waiting for the signal. The noise of the engine died away. The wheels ceased to revolve. The automobile did everything except lie down. It was a particularly pig-headed car and right from the start it had been unable to see the sense in this midnight expedition. It seemed now to have the idea that if it just lay low and did nothing, presently it would be taken back to its cosy garage.

Billie trod on the self-starter. Nothing happened.

"You'll have to get down and crank her," she said curtly.

"All right," said Bream.

"Well, go on," said Billie, impatiently.

"Eh?"

"Get out and crank her."

Bream emerged for an instant from his trance.

"All right," he said.

The art of cranking a car is one that is not given to all men. Some of our greatest and wisest stand helpless before the task. It is a job toward the consummation of which a noble soul and a fine brain help not at all. A man may have all the other gifts and yet be unable to accomplish a task the fellow at the garage does with one quiet flick of the wrist without even bothering to remove his chewing gum. This being so, it was not only unkind but foolish of Billie to grow impatient as Bream's repeated efforts failed of their object. It was wrong of her to click her tongue, and certainly she ought not to have told Bream that he was not fit to churn butter. But women are an emotional sex and must be forgiven much in moments of mental stress.

"Give it a good sharp twist," she said.

"All right," said Bream.

"Here, let me do it," cried Billie.

She jumped down and snatched the thingammy from his hand. With bent brows and set teeth she wrenched it round. The engine gave a faint protesting mutter, like a dog that has been disturbed in its sleep, and was still once more.

"May I help?"

It was not Bream who spoke, but a strange voice—a sepulchral voice, the sort of voice some one would have used in one of Edgar Allan Poe's cheerful little tales if he had been buried alive and were speaking from the family vault. Coming suddenly out of the night it affected Bream painfully. He uttered a sharp exclamation and gave a bound which, if he had been a Russian dancer, would probably have caused the management to raise his salary. He was in no frame of mind to bear up under sudden sepulchral voices.

Billie, on the other hand, was pleased. The high-spirited girl was just beginning to fear that she was unequal to the task which she had chided Bream for being unable to perform and this was mortifying her.

"Oh, would you mind? Thank you so much. The self-starter has gone wrong."

Into the glare of the headlights there stepped a strange figure, strange, that is to say, in these tame modern times. In the Middle Ages he would have excited no comment at all. Passers-by would simply have said to themselves, "Ah, another of those knights off after the dragons!" and would have gone on their way with a civil greeting. But in the present age it is always somewhat startling to see a helmeted head pop up in front of your automobile. At any rate, it startled Bream. I will go further. It gave Bream the shock of a lifetime. He had had shocks already that night, but none compared with this. Or perhaps it was that this shock, coming on top of those shocks, affected him more disastrously than it would have done if it had been the first of the series instead of the last. One may express the thing briefly by saying that, as far as Bream was concerned, Sam's unconventional appearance put the lid on it. He did not hesitate. He did not pause to make comments or ask questions. With a single catlike screech which took years off the lives of the abruptly awakened birds roosting in the neighboring trees, he dashed away towards the house and, reaching

his room, locked the door and pushed the bed, the chest of drawers, two chairs, the towel stand and three pairs of shoes against it. Only then did he feel comparatively safe.

Out on the drive Billie was staring at the man in armor who had now, with a masterful wrench which informed the car right away that he would stand no nonsense, set the engine going again.

"Why—why," she stammered, "why are you wearing that thing on your head?"

"Because I can't get it off."

Hollow as the voice was, Billie recognized it.

"B—Mr. Marlowe!" she exclaimed.

"Get in," said Sam. He had seated himself at the steering wheel. "Where can I take you?"

"Go away!" said Billie.

"Get in!"

"I don't want to talk to you."

"I want to talk to you. Get in!"

"I won't."

Sam bent over the side of the car, put his hands under her arms, lifted her like a kitten and deposited her on the seat beside him. Then, throwing in the clutch, he drove at an ever-increasing speed down the drive and out into the silent road. Strange creatures of the night came and went in the golden glow of the headlights.

Episode Six.

"Put me down," said Billie.

"You'd get hurt if I did, traveling at this pace."

"What are you going to do?"

"Drive about till you promise to marry me."

"You'll have to drive a long time."

"Right ho!" said Sam.

The car took a corner and purred down a lane. Billie reached out a hand and grabbed at the steering wheel.

"Of course, if you want to smash up in a ditch!" said Sam, righting the car with a wrench.

"You're a brute!" said Billie.

"I'm not going to talk to you."

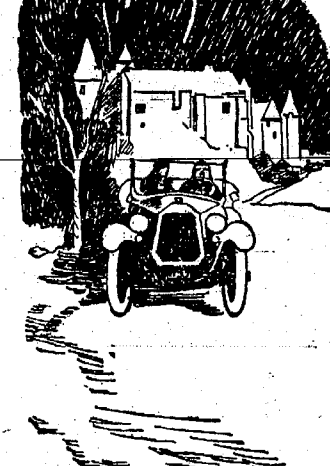
"All right. Lean back and doze off. We've the whole night before us."

"What do you mean?" cried Billie, sitting up with a jerk.

"Have you ever been to Scotland?"

"What do you mean?"

"I thought we might push up there."



"Have You Ever Been to Scotland?"

We've got to go somewhere and, oddly enough, I've never been to Scotland."

Billie regarded him blankly.

"Are you crazy?"

"I'm crazy about you. If you knew what I've gone through tonight for your sake you'd be more sympathetic. I love you," said Sam, swerving to avoid a rabbit. "And what's more, you know it."

"I'm engaged to Bream Mortimer."

"Oh, no, that's all off," Sam assured her.

"It's not!"

"Right off!" said Sam firmly. "You could never bring yourself to marry a man who dashed away like that and deserted you in your hour of need. Why, for all he knew, I might have tried to murder you. And he ran away! No, no, we eliminate Bream Mortimer once and for all. He won't do!"

This was so exactly what Billie was feeling herself that she could not bring herself to dispute it.

"Anyway, I hate you!" she said, giving the conversation another turn.

"Why? In the name of goodness, why?"

"How dared you make a fool of me in your father's office that morning?"

"It was a sudden inspiration. I had to do something to make you think well of me, and I thought it might meet the case if I saved you from a lunatic with a pistol. It wasn't my fault that you found out."

"I shall never forgive you!"

"Well, I hope you're fond of motor-ing," said Sam, "because we're going on till you do."

"Very well! Go on, then!"

"I intend to. Of course, it's all right now while it's dark. But have you considered what is going to happen when the sun gets up? We shall have a sort of triumphal procession. How the small boys will laugh when they see a man in a helmet go by in a car! I shan't notice them myself because it's a little difficult to notice anything from inside this thing, but I'm afraid it will be rather unpleasant for you. I know what we'll do. We'll go to London and drive up and down Piccadilly! That will be fun!"

There was a long silence.

"Is my helmet on straight?" said Sam.

Billie made no reply. She was looking before her down the hedge-bordered road. Always a girl of sudden impulse, she had just made a curious discovery, to wit, that she was enjoying herself. There was something so novel and exhilarating about this midnight ride that imperceptibly her dismay and resentment had ebbed away. She found herself struggling with a desire to laugh.

Till now dignity and wrath combined had kept Billie from making any inquiries into a matter which had excited in her a quite painful curiosity. In her new mood she resisted the impulse no longer.

"Why are you wearing that thing?"

"I told you. Purely and simply because I can't get it off. You don't suppose I'm trying to set a new style in gents' headwear, do you?"

"But why did you ever put it on?"

"Well, it was this way. After I came out of the cupboard in the drawing room."

"What?"

"Didn't I tell you about that? Oh, yes, I was sitting in the cupboard in the drawing room from dinner-time onwards. After that I came out and started cannoning about among Aunt Adeline's china, so I thought I'd better switch the light on. Unfortunately I switched on some sort of musical instrument instead. And then somebody started shooting. So, what with one thing and another, I thought it would be best to hide somewhere. I hid in one of the suits of armor in the hall."

"Were you inside there all the time we were . . . ?"

"Yes, I say, that was funny about Bream, wasn't it? Getting under the bed, I mean."

"Don't let's talk about Bream."

"That's the right spirit! I like to see it! All right, we won't. Let's get back to the main issue. Will you marry me?"

"But why did you come to the house at all?"

"To see you."

"To see me! At that time of night?"

"Well, perhaps not actually to see you." Sam was a little perplexed for a moment. Something told him that it would be injudicious to reveal his true motive and thereby risk disturbing the harmony which he felt had begun to exist between them. "To be near you! To be in the same house with you!" he went on vehemently, feeling that he had struck the right note. "You don't know the anguish I went through after I read that letter of yours. I was mad! I was . . . well, to return to the point, will you marry me?"

Billie sat looking straight before her. The car, now on the main road, moved smoothly on.

"Will you marry me?"

"Oh, don't talk like a parrot," cried Billie. "It reminds me of Bream."

"But will you?"

"Yes," said Billie.

Sam brought the car to a standstill with a jerk, probably very bad for the tires.

"Darling!" said Sam, leaning towards her.

"Oh, curse this helmet!"

"Why?"

"Well, I rather wanted to kiss you and it hampers me."

"Let me try and get it off. Bend down!"

"Ouch!" said Sam.

"It's coming. There! How helpless

men are!"

"We need a woman's tender care," said Sam, depositing the helmet on the floor of the car, and rubbing his smarting ears. "Billie!"

"Sam!"

"You angel!"

"You're rather a darling after all," said Billie. "But you want keeping in order," she added severely.

"You will do that when we're married. When we're married!" he repeated luxuriously.

"The only trouble is," said Billie, "father won't hear of it."

"No, he won't. Not till it is all over," said Sam.

He started the car again.

"What are you going to do?" said Billie. "Where are you going?"

"To London," said Sam. "It may be news to you, but the old lawyer like myself knows that, by going to Doctors' Commons or the Court of Arches or somewhere, or by routing the archbishop of Canterbury out of bed or something, you can get a special license and be married almost before you know where you are. My scheme—roughly—is to dig this special license out of whoever keeps such things, have a bit of breakfast, and then get married at our leisure before lunch at a registrar's."

"Oh, not a registrar's!" said Billie.

"No?"

"I should hate a registrar's."

"Very well, angel. Just as you say. We'll go to a church. There are millions of churches in London. I've seen them all over the place. He must be for a moment. Yes, you're quite right," he said. "A church is the thing. It'll please Webster."

"Webster?"

"Yes, he's rather keen on the church bells never having rung out so blithe a peal before. And we must consider Webster's feelings. After all, he brought us together."

"Webster? How?"

"Oh, I'll tell you all about that some other time," said Sam. "Just for the moment I want to sit quite still and think. Are you comfortable? Fine! Then off we go."

The birds in the trees fringing the road stirred and twittered grumpily as the noise of the engine disturbed their slumbers. But, if they had known it, they were in luck. At any rate, the worst had not befallen them, for Sam was too happy to sing.

[THE END.]

Laudable Fear.

Anyone would like to "take a year off," if it were not for the fear of being unable to find the way back.

Temperament Flighty.

Common sense bears discomfort for a reasonable time. "Temperament" flies off the handle at once.

Woman's Statement Will Help East Jordan.

"I hated cooking because all I ate turned sour and formed gas. I drank hot water and olive oil by the gallon. Nothing helped until I used Adierika." Most medicines act only on lower bowel but Adierika acts on BOTH upper and lower bowel and removes all gas and poisons. Excellent for obstinate constipation. Helps any case gas on the stomach in TEN minutes.—GIDLEY & MAC, Druggists.

Woman's Statement Will Help East Jordan.

"I hated cooking because all I ate turned sour and formed gas. I drank hot water and olive oil by the gallon. Nothing helped until I used Adierika." Most medicines act only on lower bowel but Adierika acts on BOTH upper and lower bowel and removes all gas and poisons. Excellent for obstinate constipation. Helps any case gas on the stomach in TEN minutes.—GIDLEY & MAC, Druggists.

Woman's Statement Will Help East Jordan.

"I hated cooking because all I ate turned sour and formed gas. I drank hot water and olive oil by the gallon. Nothing helped until I used Adierika." Most medicines act only on lower bowel but Adierika acts on BOTH upper and lower bowel and removes all gas and poisons. Excellent for obstinate constipation. Helps any case gas on the stomach in TEN minutes.—GIDLEY & MAC, Druggists.

Woman's Statement Will Help East Jordan.

"I hated cooking because all I ate turned sour and formed gas. I drank hot water and olive oil by the gallon. Nothing helped until I used Adierika." Most medicines act only on lower bowel but Adierika acts on BOTH upper and lower bowel and removes all gas and poisons. Excellent for obstinate constipation. Helps any case gas on the stomach in TEN minutes.—GIDLEY & MAC, Druggists.

Woman's Statement Will Help East Jordan.

"I hated cooking because all I ate turned sour and formed gas. I drank hot water and olive oil by the gallon. Nothing helped until I used Adierika." Most medicines act only on lower bowel but Adierika acts on BOTH upper and lower bowel and removes all gas and poisons. Excellent for obstinate constipation. Helps any case gas on the stomach in TEN minutes.—GIDLEY & MAC, Druggists.

Woman's Statement Will Help East Jordan.

"I hated cooking because all I ate turned sour and formed gas. I drank hot water and olive oil by the gallon. Nothing helped until I used Adierika." Most medicines act only on lower bowel but Adierika acts on BOTH upper and lower bowel and removes all gas and poisons. Excellent for obstinate constipation. Helps any case gas on the stomach in TEN minutes.—GIDLEY & MAC, Druggists.

Woman's Statement Will Help East Jordan.

"I hated cooking because all I ate turned sour and formed gas. I drank hot water and olive oil by the gallon. Nothing helped until I used Adierika." Most medicines act only on lower bowel but Adierika acts on BOTH upper and lower bowel and removes all gas and poisons. Excellent for obstinate constipation. Helps any case gas on the stomach in TEN minutes.—GIDLEY & MAC, Druggists.

Woman's Statement Will Help East Jordan.

"I hated cooking because all I ate turned sour and formed gas. I drank hot water and olive oil by the gallon. Nothing helped until I used Adierika." Most medicines act only on lower bowel but Adierika acts on BOTH upper and lower bowel and removes all gas and poisons. Excellent for obstinate constipation. Helps any case gas on the stomach in TEN minutes.—GIDLEY & MAC, Druggists.

Woman's Statement Will Help East Jordan.

"I hated cooking because all I ate turned sour and formed gas. I drank hot water and olive oil by the gallon. Nothing helped until I used Adierika." Most medicines act only on lower bowel but Adierika acts on BOTH upper and lower bowel and removes all gas and poisons. Excellent for obstinate constipation. Helps any case gas on the stomach in TEN minutes.—GIDLEY & MAC, Druggists.